

RainBrain®

Planning and installation



UNIDOMO®

Web: www.unidomo.de

Telefon: 04621- 30 60 89 0

Mail: info@unidomo.com

Öffnungszeiten: Mo.-Fr. 8:00-17:00 Uhr

VIESMANN

Buderus

 **Vaillant**

WOLF

 **JUNKERS**  **BOSCH**

 **remeha**

 **DAIKIN**

ROTEX

a member of DAIKIN group



-  Individuelle Beratung
-  Kostenloser Versand
-  Hochwertige Produkte

-  Komplettpakete
-  Über 15 Jahre Erfahrung
-  Markenhersteller

Unprecedented shower comfort. RainBrain, the innovation from Hansgrohe, adds intelligence to the shower – and creates even more Shower Fun. It gives you comfortable, digital control over a wide variety of functions: choice of showers, spray modes, water volume, temperature, lighting and sound. At the light touch of a finger on the RainBrain screen, simple, intuitive symbols navigate the user through all the functions. Complex technology that is easy and intuitive in its operation, attractive in its design and simple to plan and install. This brochure will show you how.





Installation scenario. The Hansgrohe RainBrain electronic shower control consists of four single components which are conveniently divided into a basic set and a finish set.

Basic set:

- ③ Connecting bridge to the function box
- ⑤ Installation housing for the control panel

Finish set:

- ④ Function box
- ⑥ Control panel with touch screen display

The convenient separation of the components for the working parts and finish sets ensures simple and safe installation. Furthermore, the time required for installation can be easily calculated.

- | | |
|--|--|
| ① Hot and cold water supply | ⑧ Hansgrohe Fixfit hose connection |
| ② Shower feed pipes | ⑨ Hansgrohe Raindance AIR 100 side showers |
| ③ Hansgrohe RainBrain connecting bridge | ⑩ Hansgrohe Raindrain XXL waste system |
| ④ Hansgrohe RainBrain function box | ⑪ Audio amplifier |
| ⑤ Hansgrohe RainBrain installation housing for the control panel | ⑫ Lighting control set |
| ⑥ Hansgrohe RainBrain control panel | ⑬ Junction box for operating voltage |
| ⑦ Hansgrohe Raindance Rainfall | ⑭ Loudspeaker |
| | ⑮ Lighting |



Planning and installation instructions

1 Hot and cold water supply

The specific dimensions of each system must be determined according to personal preferences, frequency of usage and the number of users. Operating pressure max. 1 MPa. Recommended operating pressure: 0.2 – 0.5 MPa (1 MPa = 10 bar = 147 PSI). Hot water temperature: max. 60°C. When calculating the storage and drain capacity, bear in mind that, depending on which showers are combined, up to 48 l/min of mixed water are needed at 0.3 MPa. **Caution:** This product cannot be used in combination with continuous flow water heaters. Large differences in pressure between the cold and hot water outlets must be equalized.

2 Shower feed pipes

Function box: 2 x DN20 hot/cold
Rainfall: 3 x DN15 mixed water (if flow pressure < 3 bar DN20)
Hand shower: 1 x DN15 mixed water
Side showers: 1 x DN20 mixed water

3 Hansgrohe RainBrain connecting bridge

The connecting bridge serves as a base for the function box, and as a connection for both the hot and cold water feed pipes and the five shower feed pipes. Installation is carried out during the construction phase.

Caution: The connecting bridge must be mounted perpendicular to the vertical feed pipes, rinsed and checked in accordance with the applicable regulations and connected to the equipotential bonding grid.
Connection threads:
2 x G 3/4 internal thread for hot and cold water connection
5 x G 3/4 internal thread for the shower connection pipes.

4 Hansgrohe RainBrain function box

The function box houses: Electronic temperature control, water flow control if applicable, 5 magnetic valves to control the shower functions, power supply unit, the electronic control system and lighting control. Proper installation of the function box and the connecting bridge requires that an appropriate installation space must be reserved (minimum safety zone 2). **Caution:** It is essential that the function box is easily accessible for maintenance. The function box is connected to the control panel in the shower area via a 7 m cable. The connection cable is laid in a Ø 25 mm PE empty conduit. The function box is mounted during the finishing phase of the bathroom. Power supply: 230 V/50 Hz direct connection.

5 Hansgrohe RainBrain installation housing for the control panel

The installation housing serves as a base for the control panel and is installed during the construction phase. The required installation depth is 84 mm. An empty Ø 25 mm conduit (control cable) must be laid between the installation housing and the function box, and a Ø 20 mm empty conduit (audio cable) must be laid between the function box and the audio amplifier. The control panel is not inserted into the installation housing until the finishing phase of the bathroom.
Control cable: 7 m long, Ø 25 mm PE empty conduit; audio cable: 7 m long, Ø 20 mm PE empty conduit.

6 Hansgrohe RainBrain control panel

The control panel for controlling the different shower functions is inserted into the installation housing during the finishing phase of the bathroom.

7 Hansgrohe Raindance Rainfall

Quick and simple installation of the Raindance Rainfall is facilitated by using the iBox universal. Considering the exceptional length and weight of this overhead shower, the iBox universal ensures that the Raindance Rainfall is securely mounted and sits perfectly on the wall (product not included in delivery). **Caution:** The net weight of the shower without water is 12 kg. Please ensure sufficient wall reinforcement at point of installation, especially in drywall construction!

The mixed water is fed through DN15/DN20 feed pipes into the bottom opening and two side openings of the iBox universal. Another brass pipe (approx. 10 cm long) is screwed into the fourth (upwards-pointing) opening of the iBox and attached to the wall with a pipe clamp. This provides additional stability. The bottom feed pipe is also secured with a pipe clamp. For plastic pipes, an additional brass nipple must be used. The pre-assembled overhead shower panel, including the pre-attached wall escutcheon, is then simply slid onto the iBox universal and screwed on at the sides. Finished! **Caution:** The shower must be installed, rinsed and checked in accordance with the applicable regulations in order to ensure proper shower function!

8 Hansgrohe Fixfit hose connection

27453, -000 Fixfit S hose connection DN15

9 Hansgrohe Raindance AIR 100 side showers

28477, -000 Raindance AIR side showers DN15

10 Hansgrohe Raindrain XXL waste system

Floor drain (without shower tray): DN70 drain pipe Drain for shower tray:
60067, -000 Raindrain 90 XXL complete set
Drain capacity 51 l/min (damming height 15 mm) complies with DIN12056. **Caution:** The drain capacity must be greater than 50 l/min.

11 Audio amplifier

The Hansgrohe RainBrain control panel provides a standard signal (L, R, Audio GND) with 0dBu level (0.775 V).

To complement the Hansgrohe RainBrain we recommend the Axor Starck loudspeakers (# 40874,-000) in combination with the DeToma A403 active module (www.detoma.com) or the DeToma Q 110 loudspeaker/amplifier set. DeToma products are available at specialised radio/TV retailers.

Power supply: 230 V/50 Hz socket

12 Lighting control set

For external lighting
Power supply: 230 V/50 Hz direct connection

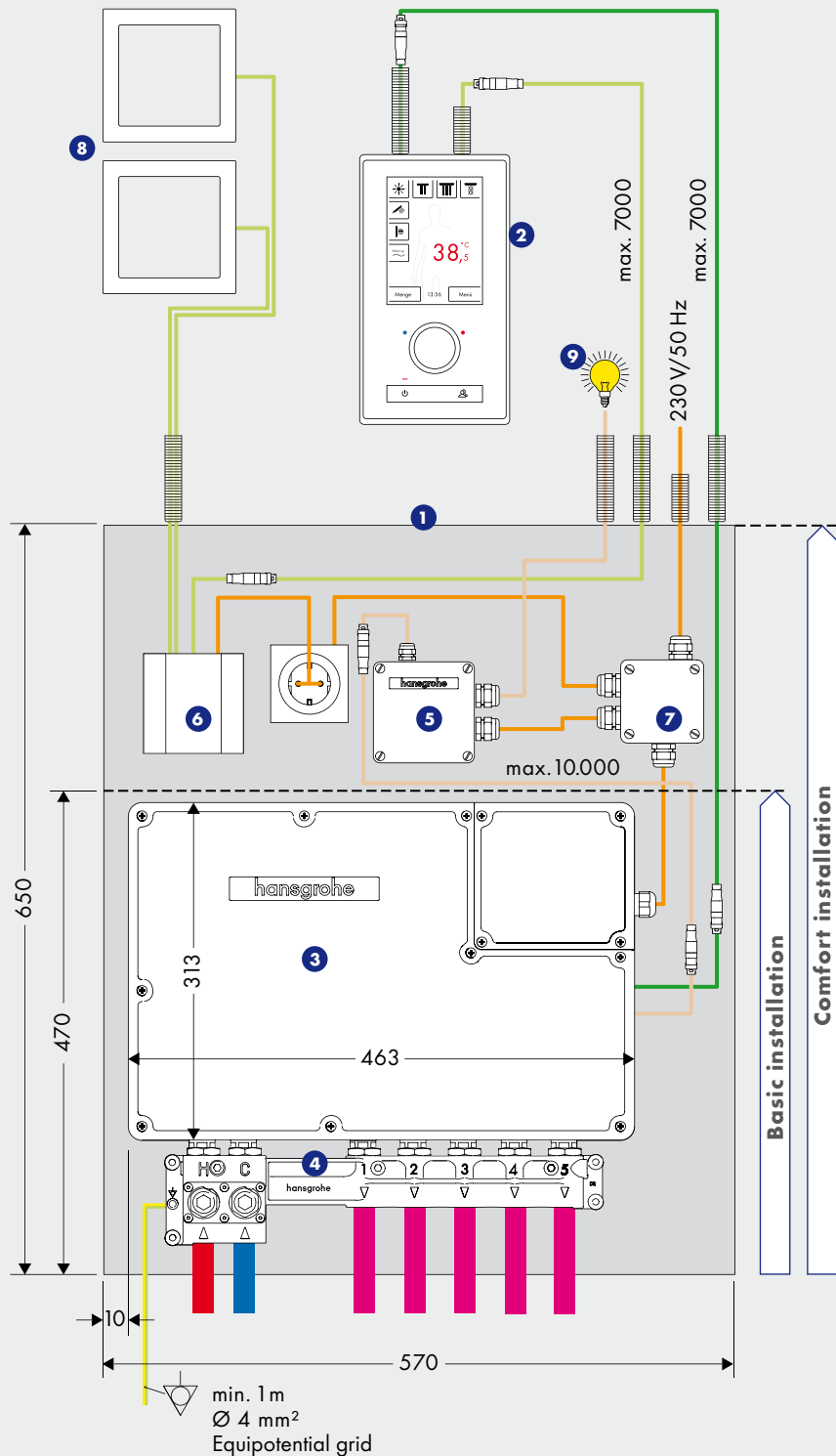
Maximum load: 500 W
Connection cable: 10 m long

27189000 Hansgrohe RainBrain lighting control set

13 Junction box for operating voltage

Function box, lighting control set (optional) and amplifier (optional) require a 230 V/50 Hz power supply.

Installation dimensions



The function box is the core of the Hansgrohe RainBrain. It houses the electronic temperature control, water flow control, 5 magnetic valves to control the shower functions, a power supply unit and the entire electronic control system. The function box is easily installed by means of a connecting bridge, either directly onto the wall or in a designated installation space. It is vital that the installation be carried out within safety zone 2. It is also essential that the function box be left accessible for potential maintenance. The positioning of the additional components for the comfort installation can be freely chosen (consider cable length). However, for space and maintenance reasons we recommend that the components be installed as illustrated.

1 Installation space

Basic installation: 470 x 570 x 95 mm
Comfort installation: 650 x 570 x 95 mm

2 Control panel with installation housing

Dimensions: 136 x 244 mm
Installation depth: 54 - 82 mm

3 Function box

Dimensions: 463 x 313 mm
Installation depth: 90 mm
Power supply: 230 V/50 Hz

4 Connecting bridge

Dimensions: 400 x 96 mm
Installation depth: 83 mm

5 Lighting control set*

Dimensions: 94 x 94 mm
Installation depth: 57 mm
Power supply: 230 V/50 Hz

6 Audio amplifier*

Model: DeToma
Dimensions: 90 x 90 mm
Installation depth: 90 mm
Power supply: 230 V/50 Hz

7 Junction box for operating voltage*

Dimensions: 75 x 75 mm
Installation depth: 57 mm
Power supply: 230 V/50 Hz

8 Loudspeakers*

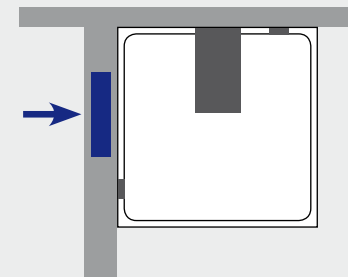
9 Lighting*

*These products are not included in delivery

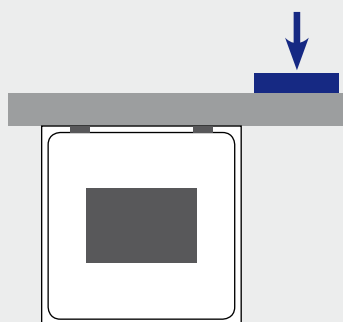
Installation scenario. Whether the shower is positioned along the wall, in a corner or an alcove: the RainBrain can be used in any installation scenario. The only condition: the function box must remain accessible for potential maintenance.

 Function box
 Access to RainBrain

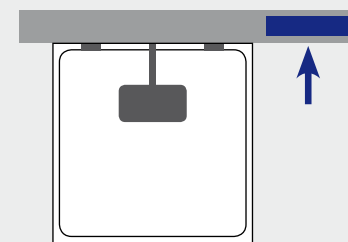
Example for a corner installation



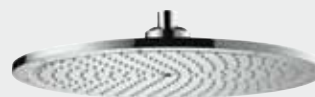
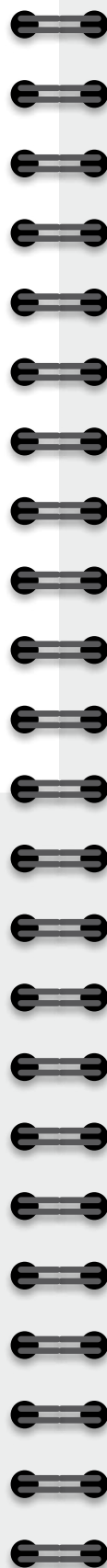
Example for a back wall installation



Example for a front wall installation



Controllable showers. RainBrain provides comfortable, digital control of all shower functions.



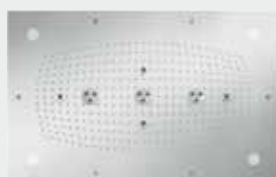
Raindance® Royale S 350 AIR
overhead shower DN20
Ø 350 mm # **28420, -000**
Shower arm DN20 470 mm
27410, -000 (not shown)
Ceiling connector DN20 100 mm
27418, -000 (not shown)



Raindance® E 420 AIR
1 jet with RainAir
27372, -000 (not shown)
2 jet with RainAir and Rainflow
27373, -000



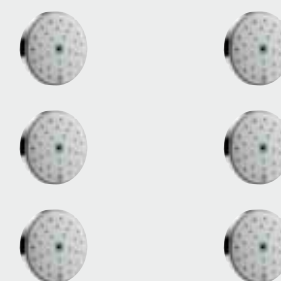
Raindance® Rainmaker® AIR 600 mm
incl. Highflow thermostat for concealed
installation on iBox universal basis
Overhead shower with lighting
28404, -000
dto. without lighting # **28403, -000**
(not shown)



Raindance® Rainmaker® AIR 680 x 460 mm
overhead shower with lighting
28418, -000
dto. without lighting # **28417, -000**
(not shown)



Raindance® Rainfall® 520 x 280 mm
overhead shower with Rain AIR,
Whirl and Rainflow
28411, -000



Raindance® AIR
side shower with Normal spray,
AIR function
28477, -000, -800, -880

Product overview



pure chrome



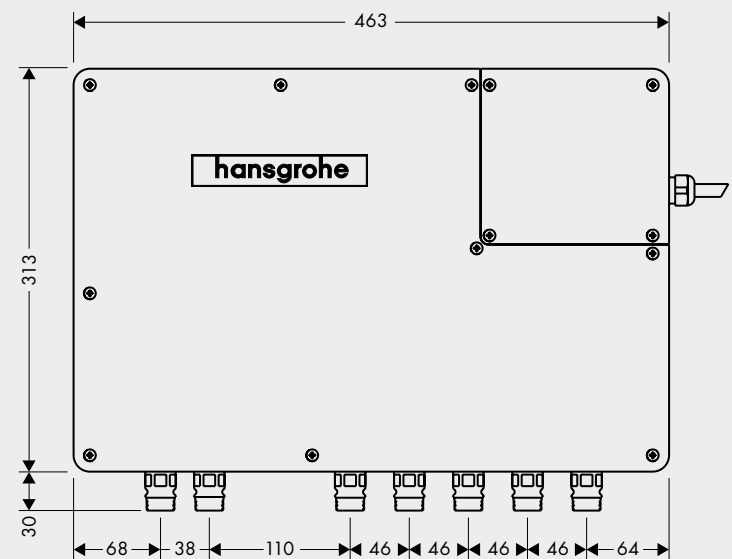
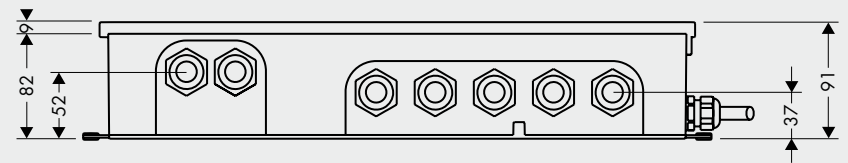
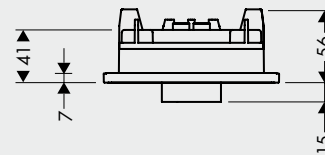
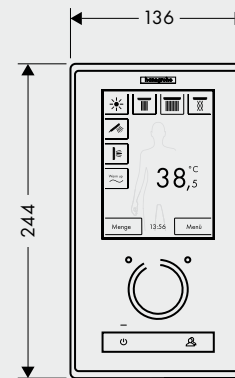
white chrome



RainBrain® finish set with water flow control
 consisting of control panel with TouchScreen user interface, function box with
 electronic temperature control, water flow control, 5 magnetic valves and
 electronic control system (power supply 230 V/50 Hz)
 pure chrome # **15842000**
 white chrome # **15842400**

RainBrain® finish set without water flow control
 consisting of control panel with TouchScreen user interface, function box with
 electronic temperature control, 5 magnetic valves and electronic control system
 (power supply 230 V/50 Hz)
 pure chrome # **15841000**
 white chrome # **15841400**

to be combined with:
 RainBrain® basic set
 # **15840180**
 Lighting control set
 # **27189000**



all dimensions in mm

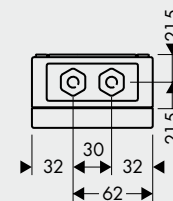
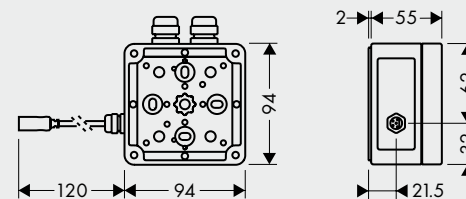
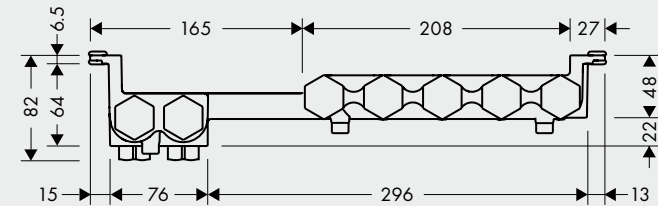
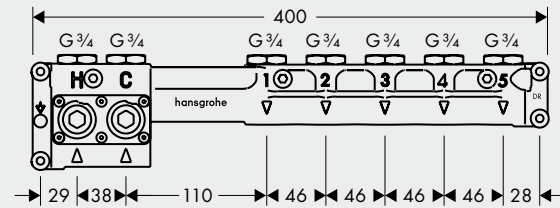
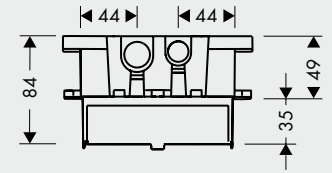
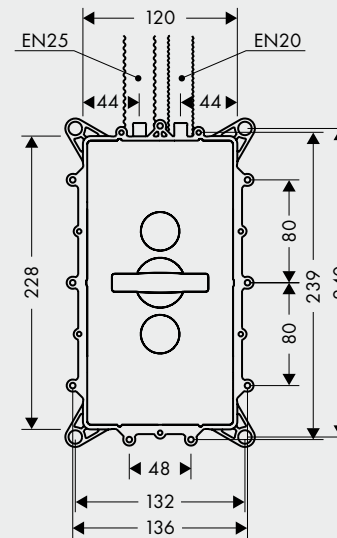
Product overview



RainBrain® basic set
 consisting of installation housing for the control panel, connection block with integrated shut-off device and dirt filter for G^{3/4} hot/cold water feed pipes, 5 x G^{3/4} connections for the showers and quick connectors for mounting the installation box, 7 m Ø 25 mm PE empty conduit for the control cable from control panel to installation box, 7 m Ø 20 mm PE empty conduit for audio cable
15840180



RainBrain® Lighting control set
 Power supply: 230 V/50 Hz Maximum load: 500 W
 consisting of relay lighting control, 7 m connection cable
27189000



all dimensions in mm

www.hansgrohe-int.com/rainbrain

Cyprus - Hansgrohe Middle East & Africa Limited · Artemisia Business Center
14 Charalambou Mouskou · Office 201 · CY-2015 Strovolos · Nicosia · Cyprus
Tel. +357 22 441370 · Fax +357 22 441374
nicosia@hansgrohe.com · www.hansgrohe.com

Germany - Hansgrohe · Postbox 1145 · D-77757 Schiltach
Tel. +49 78 36 51-0 · Fax +49 78 36 51-13 00
info@hansgrohe.com · www.hansgrohe.com

Great Britain - Hansgrohe · Units D1 and D2 · Sandown Park Trading Estate
Royal Mills · Esher · Surrey · KT10 8BL
Tel. +44 (0) 1372 465655 · Fax +44 (0) 1372 470670
enquiries@hansgrohe.co.uk · www.hansgrohe.co.uk

Portugal - Hansgrohe · Rua Antoine de Saint Exupéry · Alapraia
P-2765-043 Estoril · Tel. +351 21 4667110 · Fax +351 21 4667119
hansgrohe@jrb.pt · www.hansgrohe.com

Singapore - Hansgrohe Pte. Ltd. · 69 Mohamed Sultan Road
Singapore 239015 · Tel. +65 6884 5060 · Fax +65 6884 5070
info@hansgrohe.com.sg · www.hansgrohe.com.sg