

Axor Massaud





UNIDOMO®

Web: www.unidomo.de

Telefon: 04621- 30 60 89 0

Mail: info@unidomo.com

Öffnungszeiten: Mo.-Fr. 8:00-17:00 Uhr

VIESMANN

Buderus

 **Vaillant**

WOLF

 **JUNKERS**  **BOSCH**

 **remeha**

 **DAIKIN**

ROTEX

a member of DAIKIN group



-  Individuelle Beratung
-  Kostenloser Versand
-  Hochwertige Produkte

-  Komplettpakete
-  Über 15 Jahre Erfahrung
-  Markenhersteller

Nature Inspired Design

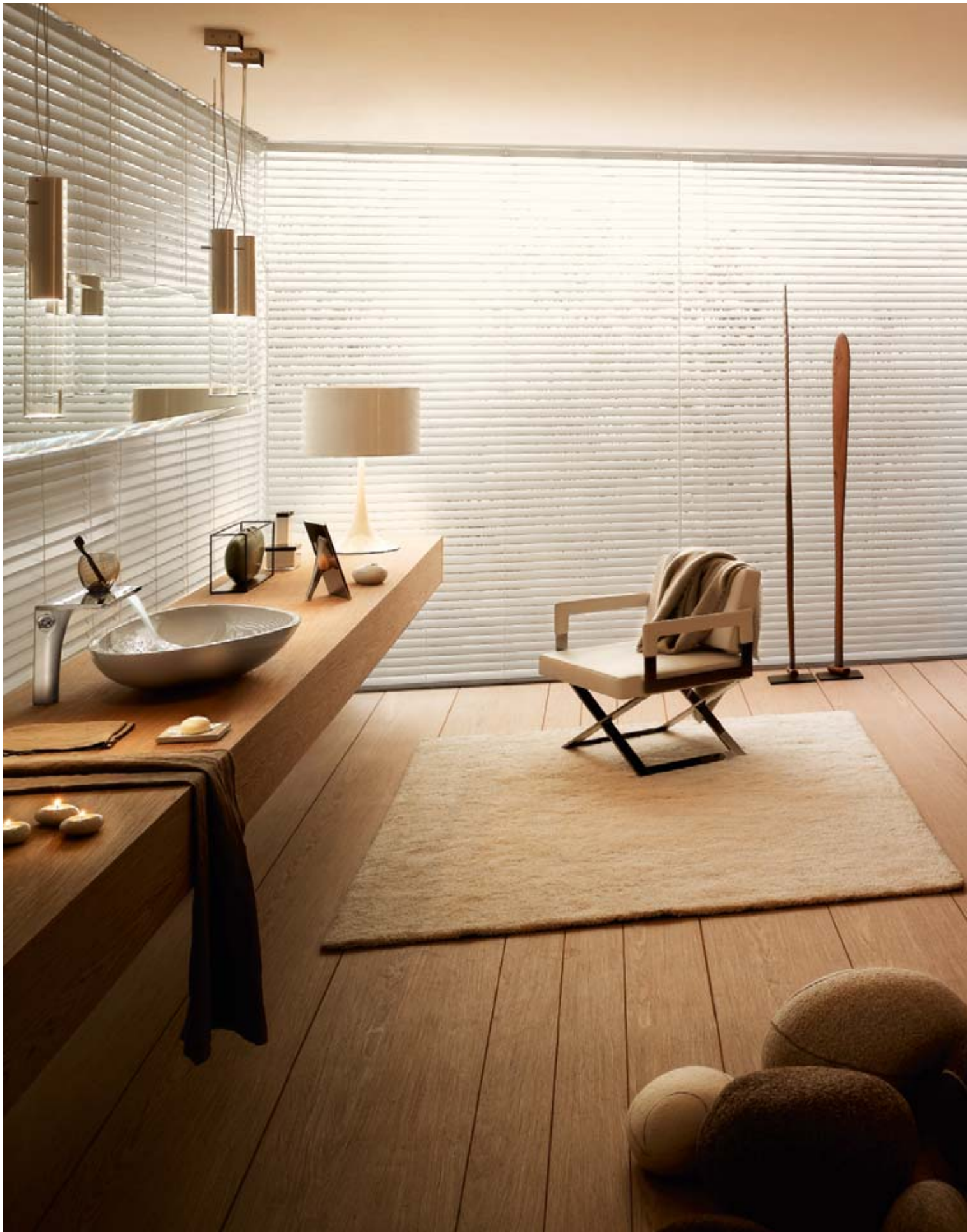


In the bathroom we leave everyday life behind us. We enjoy precious, very personal moments. These are some of the few occasions we are in touch with our selves – and at the same time so closely connected to one of the most important elements: water, source of all life.

When French designer Jean-Marie Massaud went back to our origins, he found something vital and elemental. Inspired by nature, he created a fascinating bathroom collection based on a design philosophy where the centre of attention is always human feelings and needs.

Axor Massaud harmoniously links organic and geometrical shapes, natural aesthetics and modern design. On one side gently curved lines, like in a blade of grass. On the other, the natural, downward tumbling motion of water. And in between, clear geometrical lines and ingeniously concealed technology.

With dreamlike lightness, Massaud reveals the symbiosis between human being, water, object and space. Axor Massaud transforms water, the element of life, into a primal experience. For people who delight in the original – and the special.



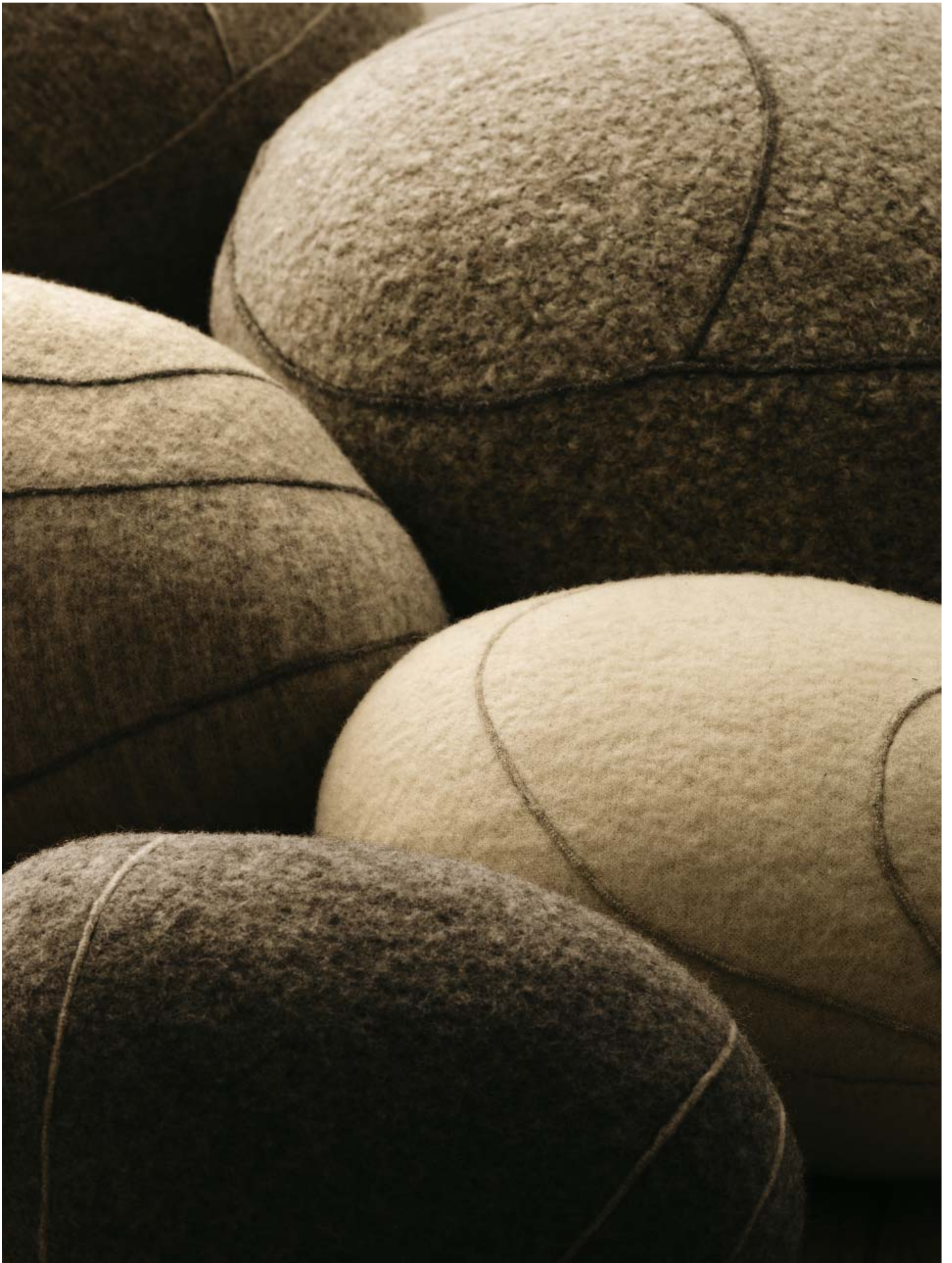






Axor Massaud blends gently curved lines with geometrical shapes, creating sculptures that provide us with water in its purest form.

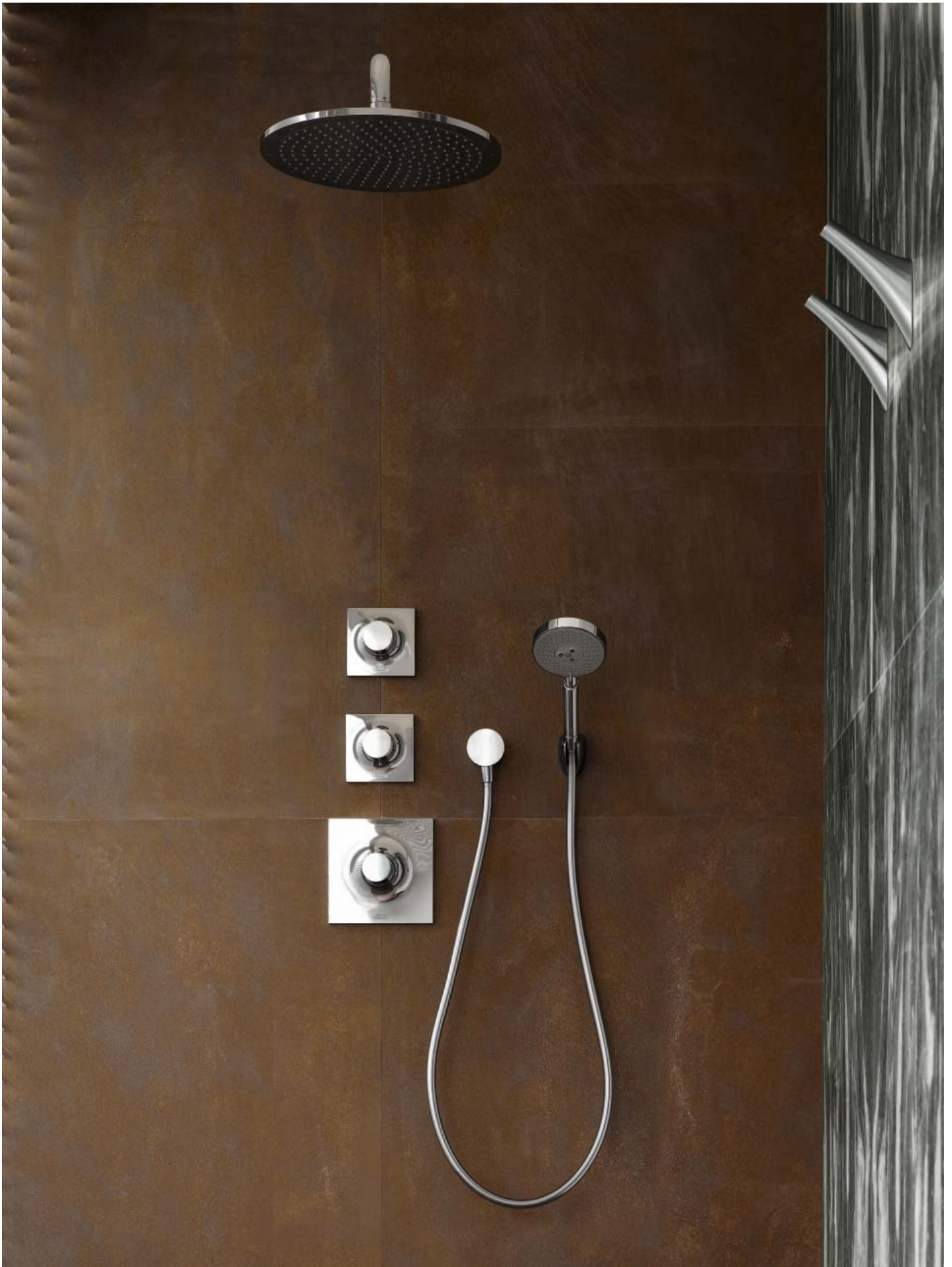








Water as our primal element: experience it as never before with Axor Massaud. The precious element pours down as if from a stream and our experience of water takes on a whole new, emotional quality.





When showering with Axor Massaud, every detail is perfect. The concealed thermostat ingeniously merges the beauty of the circle with the angularity of the square. Elegant reflections set highlights.







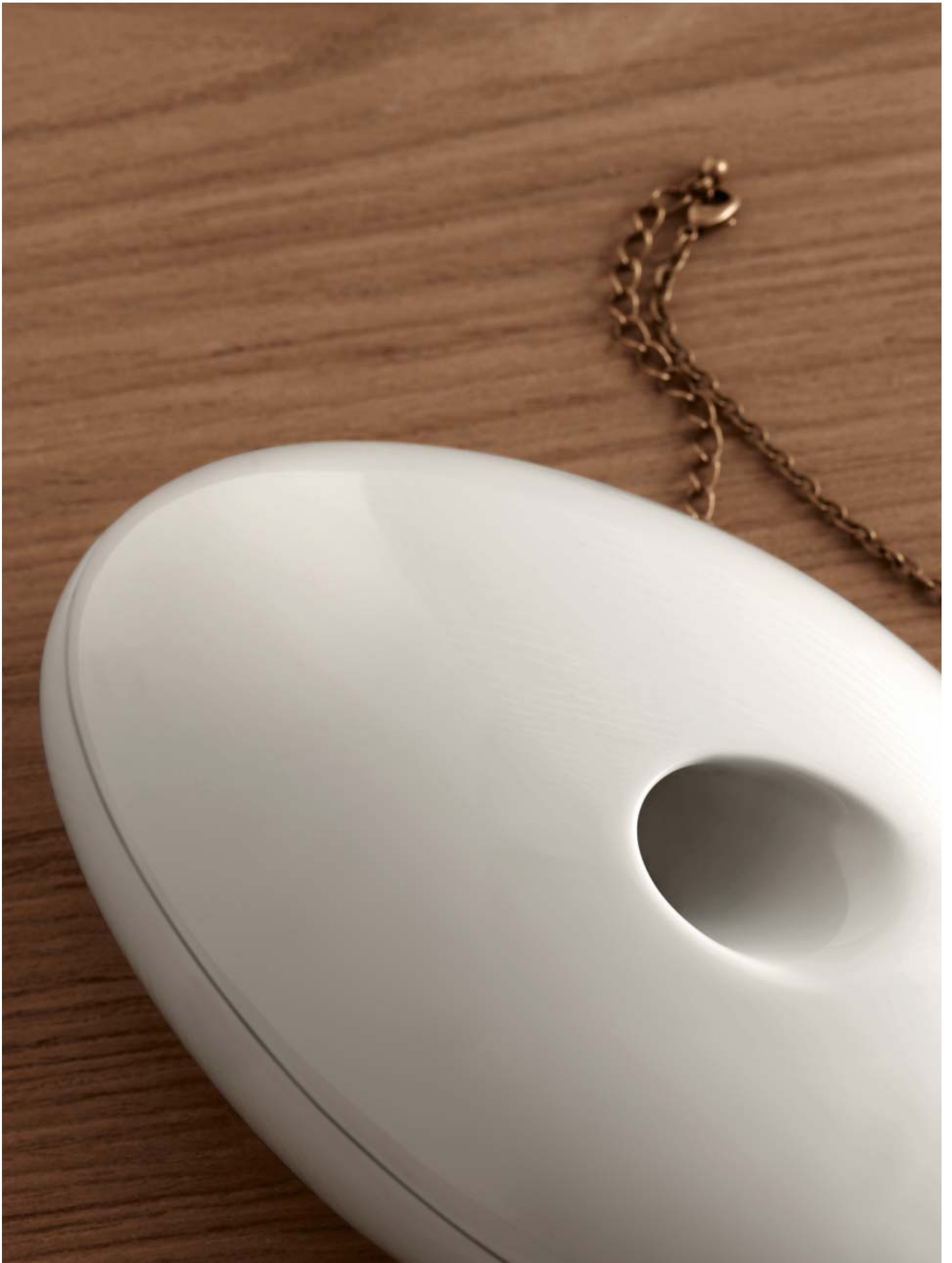


Design inspired by nature – a design philosophy uniquely embodied by this remarkable free-standing towel holder. Nature in space, realised by Axor Massaud.









In the bathroom we celebrate a ritual of cleansing, relaxation and balance. Axor Massaud provides the accessories essential to this experience, such as standing mirrors and cosmetics jars, to be placed according to individual taste and as beautiful as pieces of jewellery.

Basin



Single lever basin mixer
18010,-000
ditto with copper pipes (not shown)
18014,-000



Single lever basin mixer
for wash bowls
18020,-000



3-hole basin mixer
18013,-000



3-hole wall-mounted basin mixer, wall
mounting, spout 160 mm projection
Finish set # 18112,-000
Basic set # 18113180



3-hole wall-mounted basin mixer, wall
mounting, spout 220 mm projection
Finish set # 18115,-000
Basic set # 18113180

Bidet



Single lever bidet mixer
18210,-000



3-hole bidet mixer
18213,-000

Bath



4-hole basin mixer for installation
on the tub rim, with hand shower
Finish set # 18440,-000
Basic set # 13444180



4-hole basin mixer for installation
onto tiled surround, with hand shower
Finish set # 18453,-000
Basic set # 14445180



Single lever bath mixer for upright
installation, with hand shower
Finish set # 18450,-000
Basic set # 10452180



Single lever bath mixer,
concealed installation
Finish set # 18455,-000
ibox® universal basic set
01800180



Bath spout 160 mm projection
18472,-000
Basic set # 18471180



Bath spout 220 mm projection
18473,-000
Basic set # 18471180

Shower



Single lever shower mixer,
concealed installation
Finish set # 18655,-000
ibox® universal basic set
01800180

Thermostat/Valve



Thermostat, concealed installation
Finish set # **18740,-000**
Highflow thermostat, conc. installation
Finish set # **18741,-000**



Thermostat with shut-off valve,
concealed installation
Finish set # **18745,-000**



Thermostat with shut-off and diverter
valve, concealed installation
Finish set # **18750,-000**

ibox® universal basic set
01800180



Shut-off valve, concealed installation
Finish set # **18770,-000**
Basic set
DN15, with spindle # **15973180**
DN15, ceramic seal # **15974180**
DN20, with spindle # **15970180**



Trio/Quattro diverter valve,
concealed installation
Finish set # **18730,-000**
Basic set
Trio # **15981180**
Quattro # **15930180**

Shower/Support



Raindance AIR 150 S Hand shower
28505,-000



Shower set Raindance AIR 150 S,
wall bar 90 cm and shower hose
160 cm
27986,-000

Wall bar 90 cm and
shower hose 160 cm (not shown)
27989,-000



Bodyvette body shower
28466,-000



Wall outlet with shut-off valve
27451,-000



Shower support
27521,000



Overhead shower
ø 180 mm # **28484,-000**
ø 240 mm # **28494,-000** (not shown)
Shower arm, projection
260 mm # **27409,-000**
410 mm # **27413,-000** (not shown)



Overhead shower
ø 240 mm # **28494,-000**
Ceiling connection
27469,-000



Raindance Royale AIR
overhead shower ø 350 mm
28420,-000

Shower arm 470 mm
27410,-000
Ceiling connection (not shown)
27418,-000

Accessories



Candle holder
42271, -000



Towel hook
42237, -000



Toothbrush tumbler
42234, -000



Flower vase
42274, -000



Box, oval
42272, -000



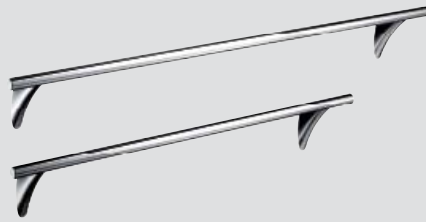
Soap dish
42233, -000



Free-standing mirror
42240, -000



Grab bar
42230, -000



Bath towel rail 600 mm
42260, -000

Bath towel rail 800 mm
42280, -000



Roll holder
42236, -000



WC brush
42235, -000



Towel holder for upright installation
42270, -000



Wash bowl 600 mm
42305, -000



Wash bowl 800 mm
42300, -000



chrome
(-000)



Hansgrohe Middle East & Africa Limited · Artemisia Business Center
14 Charalambou Mouskou · Office 201 · CY-2014 Strovolos · Nicosia · Cyprus · Tel. +357 22 441370
Fax +357 22 441374 · nicosia@hansgrohe.com · www.hansgrohe.com



EC/CY-Axor-Massaud Introduction brochure · Form-No. 84 120 501 · 03/06/8 · Subject to technical alteration and colour discrepancies · Printed in Germany on chlorine free bleached paper.
Axor is a registered trademark of Hansgrohe AG.