

TECHNOLOGIES.



Select
Switches over to a different spray type in moments, and provides pleasure at the touch of a button.



Eco Smart
Reduces the flow to save water and energy. For long-lasting pleasure.



Air Power
Combines water with a generous amount of air. For a soft, splash-free shower.



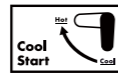
Quick Clean
Limescale deposits are simply wiped away by rubbing a finger over the flexible silicone jets.



XXL Performance
Distributes the water over the large spray face. Envelops the whole body in drops of well-being.



Comfort Zone
Defines the individually utilisable area between washstand and mixer. Comfort at all levels.



Cool Start
When turning the mixer on, cold water flows in the basic setting. Hot water only comes through when you need it.

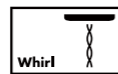
SPRAY TYPES.



Rain Air
Gentle shower rain with air-enriched drops.



Rain
Perfect for rinsing shampoo out of your hair.



Whirl
Concentrated beneficial massage spray.



Caresse Air
Dynamic, revitalising massage spray.



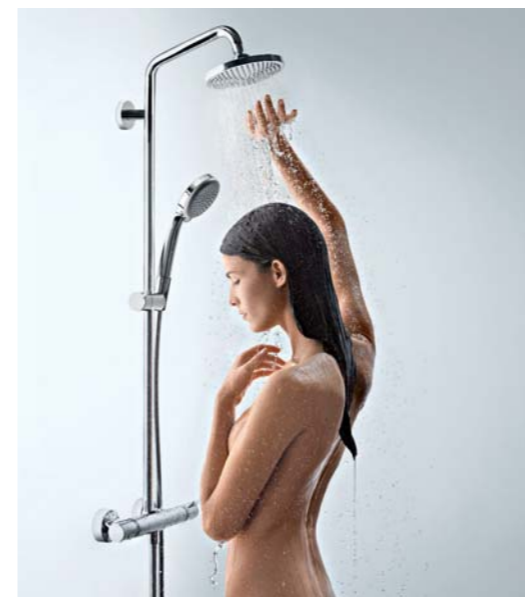
Mix
A combination of soft shower rain and dynamic spray.



Rain Flow
Powerful surge spray for generous coverage.



Rain Stream
Generous flow of soft sprays.



UK Affordable luxury for living · Subject to technical alterations and colour differences due to the printing process.
Form-Nr. 07002798 · Artwork & Design D351GN.com hello@d35ign.com · Printed in the UK



Hansgrohe Limited · Units D1 and D2 · Sandown Park Trading Estate · Royal Mills · Esher · Surrey · KT10 8BL
Tel. 01372 472030 · Fax 01372 472039
projects@hansgrohe.co.uk · www.pro.hansgrohe.co.uk

Affordable luxury for life





UNIDOMO®

Web: www.unidomo.de

Telefon: 04621- 30 60 89 0

Mail: info@unidomo.com

Öffnungszeiten: Mo.-Fr. 8:00-17:00 Uhr

VIESMANN

Buderus

 **Vaillant**

WOLF

 **JUNKERS**  **BOSCH**

 **remeha**

 **DAIKIN**

ROTEX
a member of DAIKIN group



-  Individuelle Beratung
-  Kostenloser Versand
-  Hochwertige Produkte

-  Komplettpakete
-  Über 15 Jahre Erfahrung
-  Markenhersteller



Beautiful and reliable - Hansgrohe brings luxury to the smallest room of your home.





As a company Hansgrohe stands for consistently achieving the highest standards in product and service quality as well as for customer-orientated innovation and design. Every day we work hard to exceed your expectations of us.

We know it is important for developers to have competitive pricing, backed up by quality products and outstanding service, that's why we have been supporting residential developers for many years. Specifying Hansgrohe products will add value to any house and be a differentiating feature when it comes to final sale as the bathroom "as a living space" is an increasing consumer trend.

A bathroom must be, not only a pleasurable space, but an efficient room as increasing pressures on the worlds resources have made "going green" a requirement not just a passing phase. Hansgrohe has been committed to the preservation and purity of water long before it became trendy - and it is that commitment to "efficient water pleasure" that we can bring, to offer tailored, competitive solutions, regardless of the size of the development.

Why not give us a call, you will be pleasantly surprised at how affordable Hansgrohe's exceptional quality really is.

J. Phillips

Jay Phillips



Hansgrohe - Das original

Since 1901, bathroom pioneers Hansgrohe have been one step ahead of their time manufacturing the finest taps and showers. Perfection in form and function - this was, and still is, the Hansgrohe standard. Represented by two key brands, which link the highest quality with individual design: Hansgrohe which embodies "efficient water pleasure" and Axor which delivers "designer visions for your bathroom". Together they form an unmistakable product range in great demand throughout the world.

With their award-winning portfolio of showers, mixer taps and thermostatic mixers Hansgrohe demonstrates that no compromise in design or quality is required in order to save water and energy in the bathroom.

Even the most demanding of customers will find what they are looking for in our extensive, premium quality product ranges.

Our innovative history



1953
Unica wall bar



2000
iBox universal



2012
Axor Starck Organic



1968 - Selecta hand shower



2003-2004 Raindance



2013 - Hansgrohe Select technology

Quality and technology

Reliability and resilience are particularly important in the project sector where lifetime maintenance and replacement costs are a major consideration. Due to their premium construction, German production standards, and the resulting long life, Hansgrohe showers and mixers are an easy choice for designers and decision makers all over the world.

Our AirPower Technology for example - when water infused with air becomes a gentle rain or powerful massage jet - will ensure full yet efficient shower pleasure, while the QuickClean and EcoSmart technology will lead to operational benefits, such as reduced cleaning time and maintenance cost savings.

Find out more at pro.hansgrohe.co.uk/unique

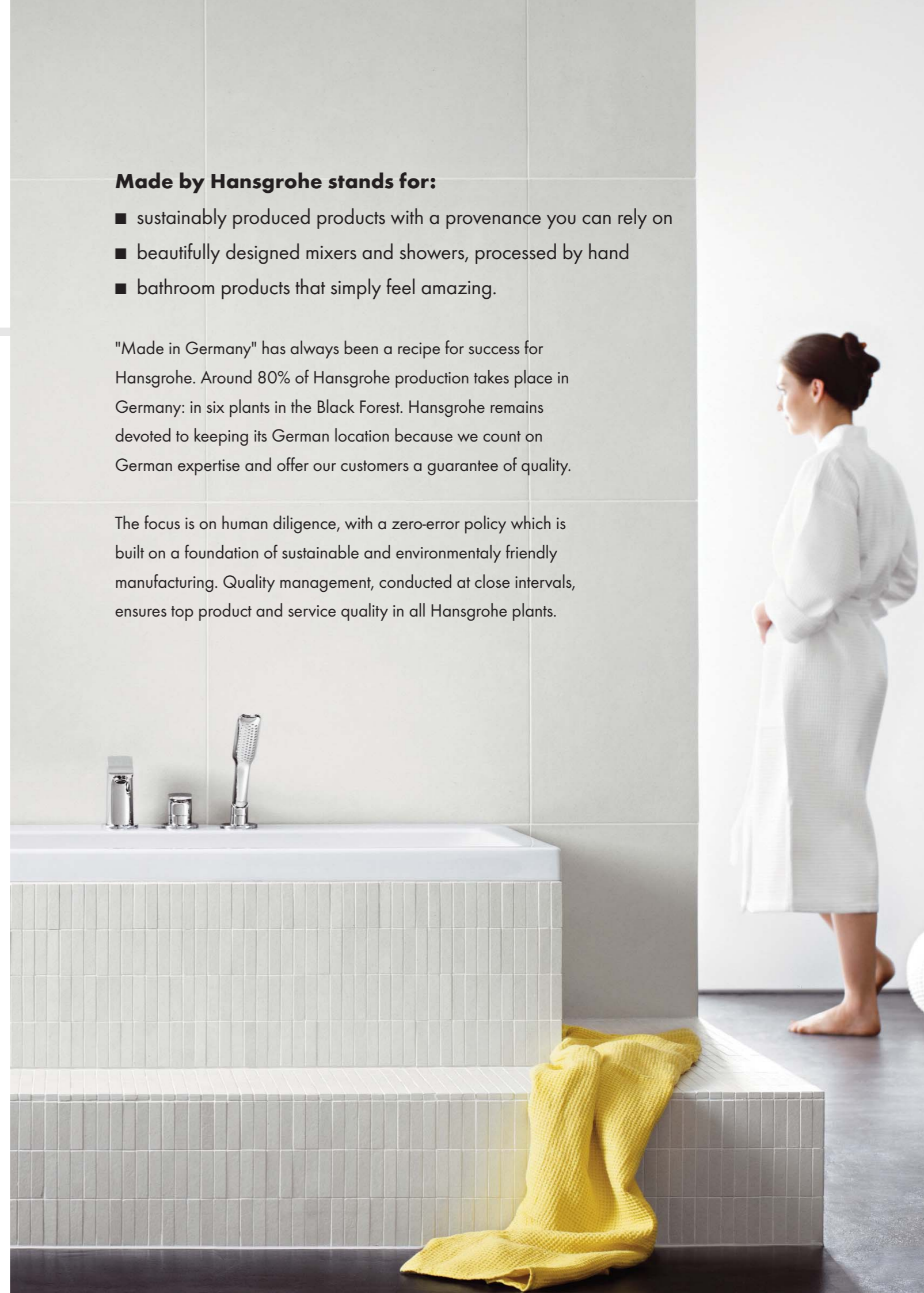


Made by Hansgrohe stands for:

- sustainably produced products with a provenance you can rely on
- beautifully designed mixers and showers, processed by hand
- bathroom products that simply feel amazing.

"Made in Germany" has always been a recipe for success for Hansgrohe. Around 80% of Hansgrohe production takes place in Germany: in six plants in the Black Forest. Hansgrohe remains devoted to keeping its German location because we count on German expertise and offer our customers a guarantee of quality.

The focus is on human diligence, with a zero-error policy which is built on a foundation of sustainable and environmentally friendly manufacturing. Quality management, conducted at close intervals, ensures top product and service quality in all Hansgrohe plants.

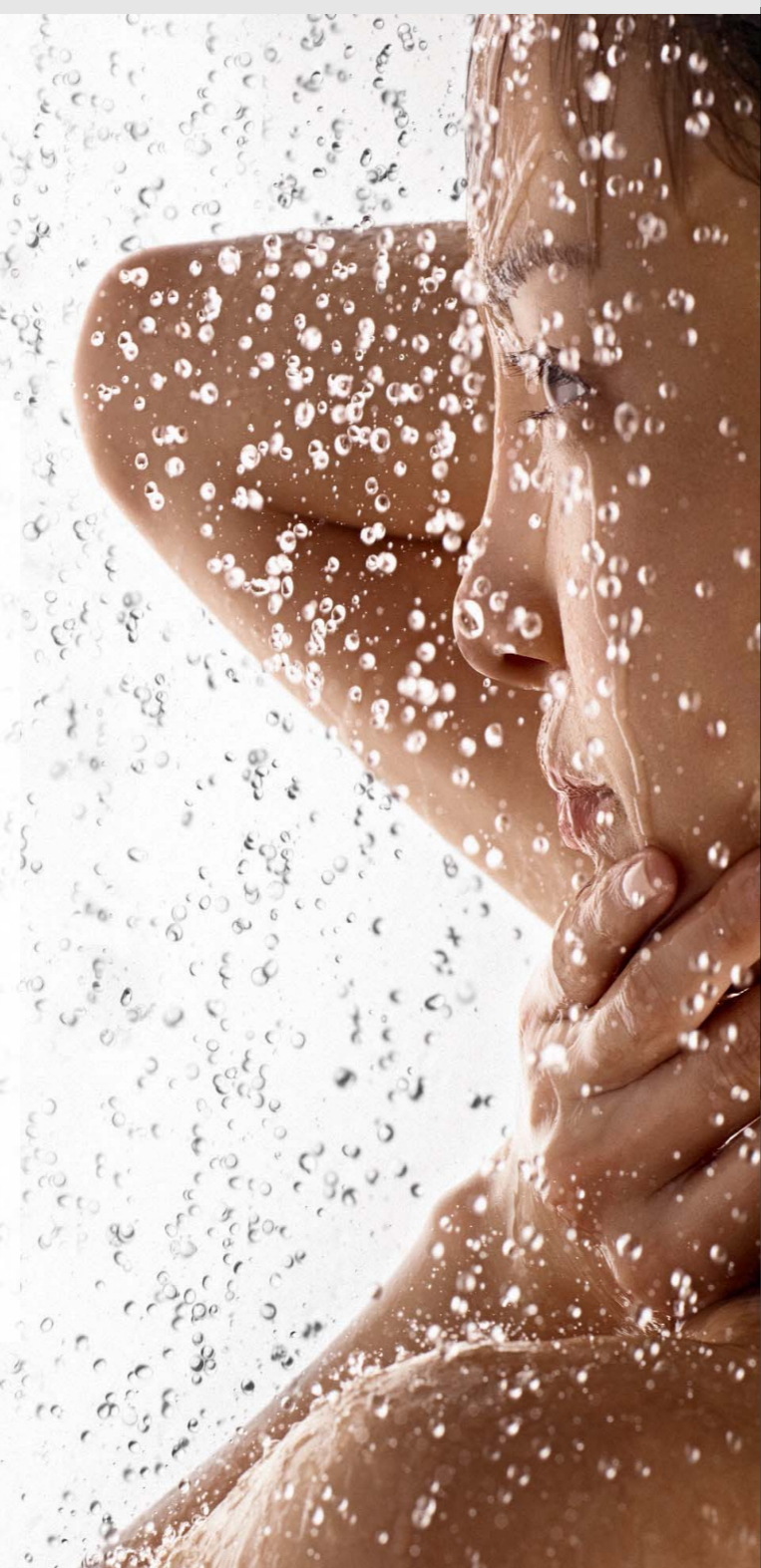




Certified performance

The Water Regulations Advisory Scheme (WRAS) is the UK Water Industry's approval scheme. Products approved by the scheme have been shown to comply with the requirements of the Water Supply (Water Fittings) Regulations 1999 and amendments. With more than 750 of our products certified by WRAS, Hansgrohe helps you to effortlessly comply with these regulations, without compromising on performance or design.

Details of these products can be found on pro.hansgrohe.co.uk/wras



Code for Sustainability

The Code for Sustainable Homes has been introduced to “drive a step-change” in sustainable home building practice. It is a standard and will form the basis for developments in the Buildings regulations around carbon emissions from and energy use within, homes.

In an era of environmental awareness amongst consumers and increasing demand for more sustainable products Hansgrohe can assist you achieving code level 4 requirements – without compromising style or experience. We can also support you through the code calculations with our bespoke calculator.

We are happy to demonstrate our Eco range in our specialist training centre, The Aquadamie, in Esher, and can demonstrate the various flow restrictors, so you can experience water flow as low 2 lt/min and feel for yourself that there are no concessions in comfort.

“After experiencing the low flow options for myself at the Aquadamie, I was confident that my proposals would not only meet the demands of code 4 – but more importantly the demands of my customers”

“Hansgrohe supported us every step of the way, from initial specification to onsite installer training – we are thrilled with the result and look forward”



Efficient water pleasure

Hansgrohe is a “green” company by conviction. We develop our products with the latest technology to conserve resources. Hansgrohe mixers and showers, which are fitted with the EcoSmart technology, consume up to 60 % less water compared to conventional products – and this without any loss of comfort. Lower hot water consumption also means lower energy requirements. That means less CO₂ emissions and lower costs.

Find out more at
pro.hansgrohe.co.uk/ecosmart



“Part G made Easy”

Hansgrohe have always been at the forefront of technology, design and understanding the implications of legislation and through our RIBA certified CPD course we can help you too. This workshop will explain all you need to know to ensure full compliance when designing and specifying new dwellings or change of use to buildings.

Covered in the course are details of the revised Part G of the Buildings Regulations which came into force on 6th April 2010, including:

- G1 Cold water supply
- G2 Water efficiency
- G3 Hot water supply and systems
- G4 Sanitary conveniences and washing facilities
- G5 Bathrooms
- G6 Kitchen and food preparation areas

The half-hour presentation will conclude with a Q&A session to ensure you get maximum benefit from attending the session.





Designer visions for your bathroom

Creative ideas are at home at Hansgrohe. The company attracts globally successful designers. It hosts workshops with renowned creative minds and designers who develop visions for the bathroom of the future. In recent years, this clear commitment to the creative process has won Hansgrohe more than 300 awards from all around the world. Hansgrohe currently ranks 11th out of approximately 1,900 companies in the iF company rankings. In doing so, it is above top brands such as Daimler, Audi, Hewlett Packard, Nokia and Volkswagen, just one place below Apple and number one in the bathroom industry.

AXOR[®]
hansgrohe



reddot design award



product design award



Innovations and design

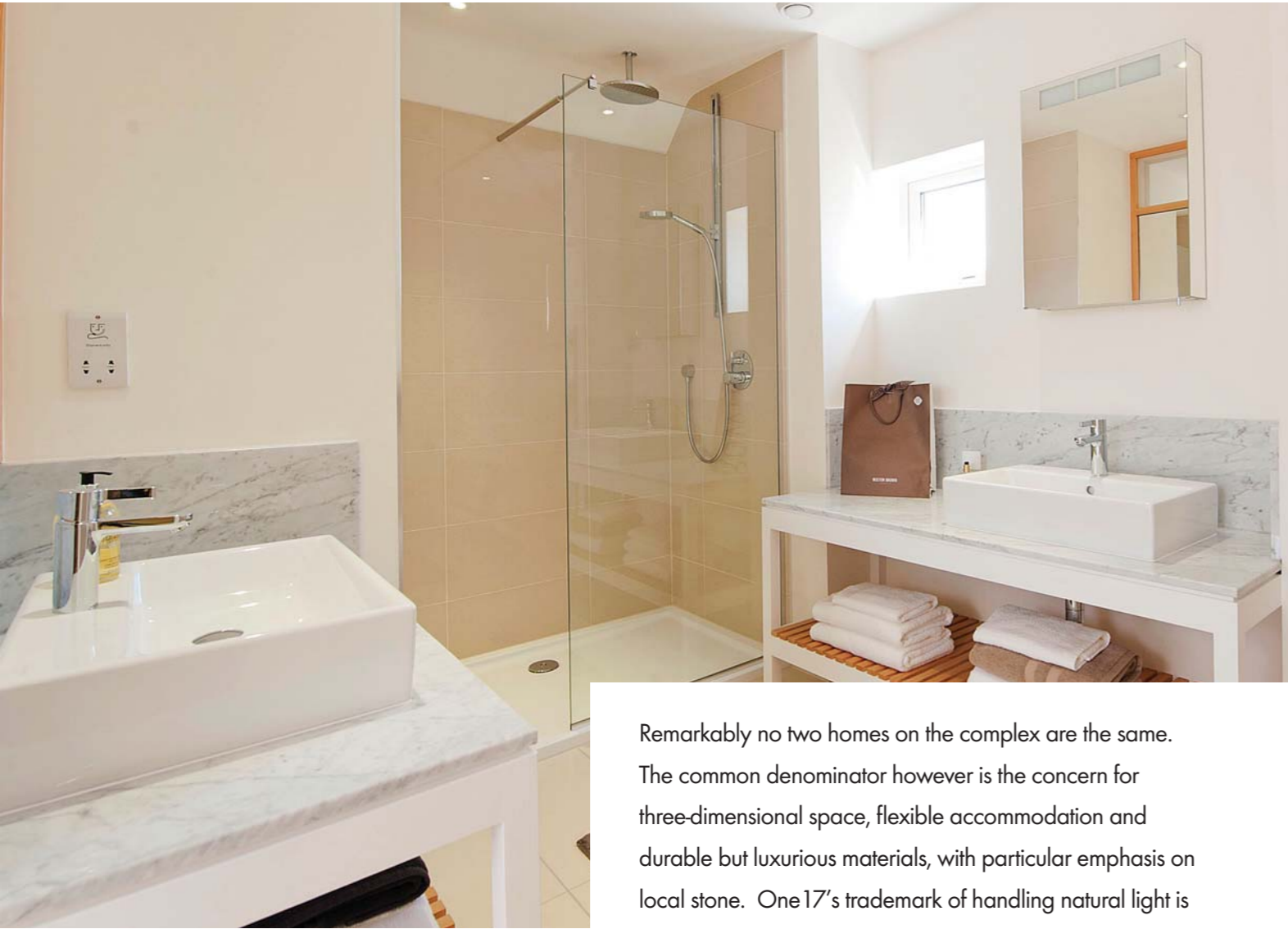
Since 1901, bathroom pioneer Hans Grohe and his descendants have traditionally been one step ahead of their time. Whether this has been inventing the first hand shower (1928) or ringing in a new shower era with Raindance (2003). Even more than 110 years after the company was founded, innovation is still the driving force as illustrated by "Select" technology and EcoSmart shower hoses – the first in the industry to comply with W270 and KTW approvals.

Brilliantly simple, simply brilliant – Select technology



The simplicity and convenience of one touch operation has finally found a home in the bathroom. Alternate spray modes or outlets with a single click giving choice at the touch of a button. Reliability is also built in with **Select** technology, tested for more than 280,000 cycles at pressures up to 50 bar - one touch is guaranteed.

The **Select** button is for shower pleasure. On the new Hansgrohe hand and overhead showers as well as on the **ShowerTablet Select** exposed valve and **ShowerSelect** concealed thermostats.



Remarkably no two homes on the complex are the same. The common denominator however is the concern for three-dimensional space, flexible accommodation and durable but luxurious materials, with particular emphasis on local stone. One17's trademark of handling natural light is evident throughout the scheme, with the beneficial effect of top lighting evident in virtually all houses.

The quality of fixtures and fittings also received special attention, as would be expected in a high-end residential scheme. Stylish, robust equipment, which delivers elegance as well as performance, was essential to maintain the standard desired, and Hansgrohe was the obvious choice. With fittings from the Talis, Focus and Raindance ranges used throughout the development.

With One17 undertaking full interior, as well as general architectural design, the coordination and attention to detail achieves a visual and material impact rarely found in open market offerings.

DELAMERE GARDENS

Delamere Gardens, a speculative housing scheme for developer MDone, was a distinct challenge for architects One17 Design.



Described by St. James' as one of the UK's largest and most exciting regeneration projects, Riverlight is a landmark London development on the banks of the river Thames, close to the iconic Battersea Power Station.

Set to become an architectural classic of the future, it comprises six towering apartment blocks, or 'Pavilions', is designed by world renowned architects Rogers Stirk Harbour and Partners. Hansgrohe fittings have been specified for all 750 residential units, the bathrooms for which are a pod construction made in Italy. Products include Axor Citterio basin mixers and Axor Starck thermostatic bath and shower controls, along with Raindance showers incorporating EcoSmart technology to save water and energy.



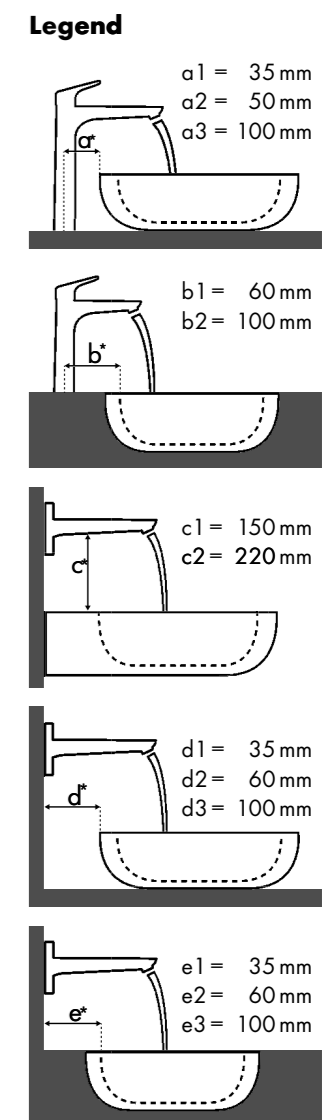
Balidon Place, a luxury residential development in the vibrant market town of Yeovil, features Hansgrohe bathroom fittings and showers throughout with integrated EcoSmart technology.

Built by C G Fry & Son, the 24 dwellings are set within the grounds of Balidon House, a former maternity hospital.

The mixed development of apartments, 4-bedroom houses and 2 Victorian style lodges all offer an appealing combination of traditional craftsmanship with modern eco technology; this is in line with company's vision to create carbon neutral buildings by 2016. Hansgrohe products include the Axor Citterio M collection, showers and showerpipes from the innovative Raindance family.



2nd Floor		Basin Dimensions								
		400 x 300	525 x 350	600 x 430	800 x 500	1200 x 505	580 x 415			
PuraVida		# 079040..00	# 031653..00	# 049160..00 # 049160..27	# 049160..60 # 049160..28	# 049180..00 # 049180..27	# 049180..60 # 049180..28	# 049112..00 # 049112..27	# 049112..60 # 049112..28	# 031758..00 # 031758..29
PuraVida 100	# 15075000 # 15075400	✓	✓ ^{b1}	✓	✓	✓	✓	✓		
	# 15132000 # 15132400	✓	✓ ^{b1}	✓	✓	✓	✓	✓		
PuraVida 110	# 15070000 # 15070400	✓	✓ ^{b1}	✓	✓	✓	✓	✓		
	# 15074000 # 15074400		✓ ^{b1}	✓	✓	✓	✓	✓		
PuraVida 200	# 15081000 # 15081400		✓ ^{b1}	✓	✓	✓	✓	✓		✓ ^{a1}
	# 15072000 # 15072400 # 15066000 # 15066400					✓	✓	✓		✓ ^{a1}
PuraVida 165 mm	# 15084000 # 15084400		✓ ^{c1} ✓ ^{e2}	✓ ^{c1}	✓ ^{c1}	✓ ^{c1}	✓ ^{c1}	✓ ^{c1}	✓ ^{d1}	✓ ^{d1}
	# 15085000 # 15085400		✓ ^{c1} ✓ ^{e2}	✓ ^{c1}	✓ ^{c1}	✓ ^{c1}	✓ ^{c1}	✓ ^{c1}	✓ ^{d2}	✓ ^{d2}



Which mixer goes with which basin? If the combination is not right, there may be irritating splashes and a loss of comfort. Hansgrohe used the ComfortZone test to test over 3000 combinations of its mixers with the most frequently used basins in order to give its customers the perfect advice. You will find the various results and recommendations at www.hansgrohe.co.uk/comfortzone-test



TECHNICAL TRAINING WITH HANSGROHE

We offer specialist technical training for installers both on site or at our training centre in Esher. Dates are available throughout the year.

- Welcome and introduction
- Aquadamie and Aquatech tour
- UK water systems
- Part G
- Stuart Turner Pumps
- Geberit
- Hansgrohe products
- Technical information

If you would like more information or to book a place email: marketing@hansgrohe.co.uk.

Service and support

With Hansgrohe you can rest assured that you are in safe hands, with the support of our experienced team from inception to completion of your project.

We will offer all the support you need, including:

- Initial project guidance and tailored specification solutions
- Bespoke range design and quoting, specific to the demands and budget of the project
- Product samples and access to The Aquadamie showroom at our UK Head Office in Esher
- Product and installation training
- Part G + buildings regulations advice + CPD training course
- Site visits – product and installation support
- In-house service technicians and dedicated project customer service support
- Stock held in UK dedicated warehouse facility for next day delivery to Project Partners when required
- 5 year guarantee – plus spare parts held for 10 years after product discontinuation



Call us on **01372 472030** or email: projects@hansgrohe.co.uk to find out how we can help you.