

GROHE PROFESSIONAL

WORK  
SMARTER

GROHE  
PROFESSIONAL

NEW

# GROHE TOUCH-FREE FITTINGS AND FLUSHING SYSTEMS

THE LATEST GENERATION

GROHE | MASTERS OF TECHNOLOGY

Cover image: Hazza Bin Zayed Stadium, United Arab Emirates



**UNIDOMO®**

**Web:** [www.unidomo.de](http://www.unidomo.de)

**Telefon:** 04621- 30 60 89 0

**Mail:** [info@unidomo.com](mailto:info@unidomo.com)

**Öffnungszeiten:** Mo.-Fr. 8:00-17:00 Uhr

**VIESMANN**

**Buderus**

 **Vaillant**

**WOLF**

 **JUNKERS**  **BOSCH**

 **remeha**

 **DAIKIN**

**ROTEX**

a member of DAIKIN group



-  Individuelle Beratung
-  Kostenloser Versand
-  Hochwertige Produkte

-  Komplettpakete
-  Über 15 Jahre Erfahrung
-  Markenhersteller

# MASTERS OF TECHNOLOGY



## THEOCHARIS LIOLIS

Master of Technology, produces unbeatable hardwearing faucet surfaces with GROHE StarLight®.

GROHE's people have been regarded by their peers in the industry as Masters of Technology, because of their innovations, outstanding design and award-winning fittings.

By a combination of their advanced craftsmanship and their cutting-edge approach to effective teamwork and processes, our Masters of Technology take the lead in developing, designing and manufacturing our outstanding product range, all the while testing and fine-tuning each piece to ensure continued customer satisfaction.

The result: Timeless design. And quality that lasts a life-time. Again and again GROHE products surprise users with unique features that provide 'Pure Freude an Wasser'. When you use a GROHE product you can feel the difference. Time after time.

Take, for example, the latest generation of GROHE electronics with bi-directional data exchange. Equipped with the latest infrared technology the products not only receive infrared commands for programming and settings, but can also send monitoring and usage information.

Another feature is the lasting quality of the surfaces. Thanks to the GROHE StarLight® coating the faucet is incredibly scratch resistant, meaning the dazzling surface won't mark or tarnish. Offering high user comfort and minimal cleaning GROHE is setting a new standard for commercial or public sanitary facilities.

# GROHE CONTENTS

THE LATEST INFRARED GENERATION WITH BIDIRECTIONAL DATA EXCHANGE	04
THE NEW REMOTE CONTROL	12
GROHE INFRARED TECHNOLOGY WITH BLUETOOTH COMMUNICATION	16
OVERVIEW OF THE RANGE	20
GROHE Infrared Faucets	20
GROHE Infrared products for Urinals	23
GROHE Infrared product for WCs	24
GROHE Faucets with Bluetooth communication	25
GROHE Shower and flushing systems with Bluetooth communication	26
GROHE Accessories	27

## GROHE TECHNOLOGIES



### GROHE StarLight®

Made-to-last surfaces ranging from satin matt to brilliant gloss.



### GROHE CoolTouch®

No scalding on hot surfaces thanks to 100% GROHE CoolTouch®.



### TouchFree

Innovative infrared technology for hygienic, touch-free actuation of basin faucets, WCs and urinals.



### GROHE EcoJoy

Save valuable resources and get 100% water enjoyment.



### GROHE QuickFix®

Faster, easier, safer – GROHE QuickFix® reduces installation time by up to 50%.



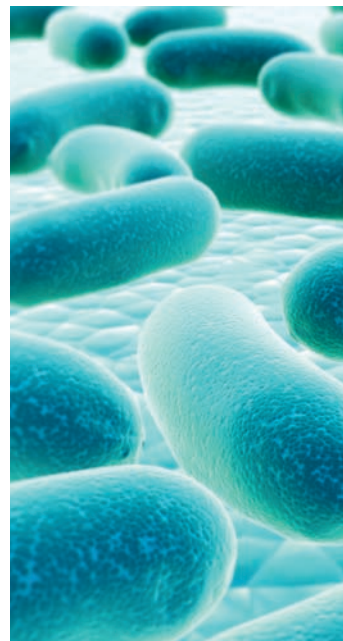
### LongLife Battery

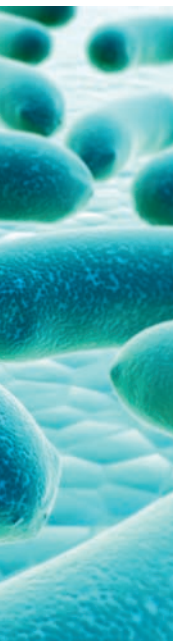
Unique low-energy electronics ensure a long service life.

# THE LATEST INFRARED GENERATION WITH BI-DIRECTIONAL DATA EXCHANGE

Infrared technology with touch-free activation has proven its worth in sanitary facilities in so many ways. It's a hands-down winner for obvious reasons: Eliminating the need for physical contact with fittings, it prevents germs from spreading. Thanks to their high standards of hygiene plus the added convenience, these infrared fittings make using sanitary facilities a lot more pleasant.

**New benchmark: Intelligent infrared fittings.** As one of the leading manufacturers of electronic faucets and flush systems, we build decades' worth of experience into all our technologies and continually refine them to meet our customers' needs. GROHE electronic products are fitted with the very latest technology to enable bi-directional data exchange. That means the infrared products – which feature a single infrared window and can be recognised by the infrared control's "eye" that lights up yellow, not red as with earlier models – can not only receive commands for programming and settings but also transmit consumption data and settings. This monitoring enables our market-leading infrared solution to deliver highly transparent consumption data for each individual draw-off point. Information relating to frequency, duration and time of activation is now clearer than ever before. It allows operating costs for water and electricity to be more accurately determined and reduced over the long term.







**The hands-down winner for great hygiene.** GROHE infrared technology is traditionally used mainly for basins and urinals. It's here and with WCs that the hygienic benefits of touch-free actuation become particularly evident. The more highly frequented the sanitary facilities, the more users stand to gain from automatic waterflow activation. It's ideal for hotels and restaurants, companies in the healthcare and food industries, at stations and airports, at recreational and sports facilities as well as in many other types of public and commercial spaces.

**Flexible power supply for use.** Since GROHE electronics can be operated with your choice of 230 V mains connection, a 6 V lithium battery or the GROHE power box, there's no limit to where they can be used. This also means that retrofitting draw-off points with infrared technology – during renovations, for example – does not require a socket.





# MAXIMUM HYGIENE, SIMPLE SETTING AND EXCELLENT EFFICIENCY

A key innovation in GROHE infrared products is the improved control of all functions: In addition to simple setting by hand via sensors as we know it, our one eye infrared models now also offer the option of changing settings using the remote control or an app on a smartphone or tablet. That makes it easier to set or adjust functions such as running time and regular, automatic flushes. Even changing or activating functions such as thermal disinfection or automatic flushing (stagnation flush) is now comprehensive, simple and intuitive.

## Setting options by hand via sensors

7 preset standard programs for the key functions

Automatic flushing frequency  
(off, 24 or 72 hours, to prevent water stagnation)

Automatic flushing duration (60, 300 or 600 sec.)

Thermal disinfection (3.5 or 11 min. or continuous operation);  
Sensor monitored: Automatic stop when a hand approaches (reflection)

Cleaning stop function (off or 180 sec., easy for cleaning staff to operate)

Setting flush volume for the WC and urinal (WC 4-9 l, urinal 1-7 l)

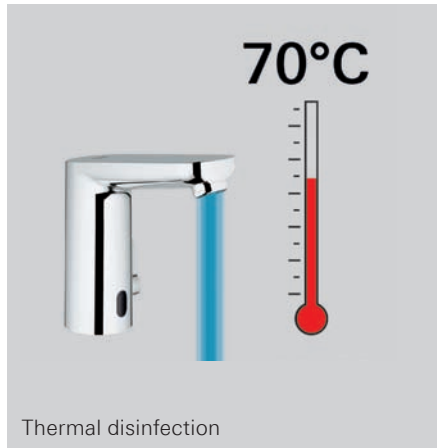
Battery charge indicator: Blinking LED = low battery charge;  
displays 4 charge levels: >60%, >40%, >20%, <20%

**Meeting the most exacting hygiene standards.** The preset programs in our infrared products are designed to deliver just the right amount of water and make it easier to meet any building's specific hygiene standards. By flushing regularly (according to users' settings) it prevents germs from growing in pipes (biofilm). Not only that, they also prevent unpleasant odours that can be caused by stagnation water, especially in WCs and urinals.

**Additional setting options via remote control or app.** The remote control or app lets you fine-tune all functions even more accurately and read out consumption data reliably and simple. Another benefit of the new GROHE technology is being able to set not only individual draw-off points but also entire rows to the desired parameters with predefined profiles at the touch of a button.

**Infrared = sustainability.** GROHE electronics significantly reduce water consumption by starting and stopping the flow of water precisely as needed. They can slash water use by up to 70% compared with conventional single-lever mixers. And GROHE electronics are also sustainable in terms of their maintenance requirements and long life. Our batteries use very little energy, so they last a long time: up to seven years at 150 actuations per day. Alternatively, all our infrared mixers can run on a mains connection (230 V) or via the GROHE power box.

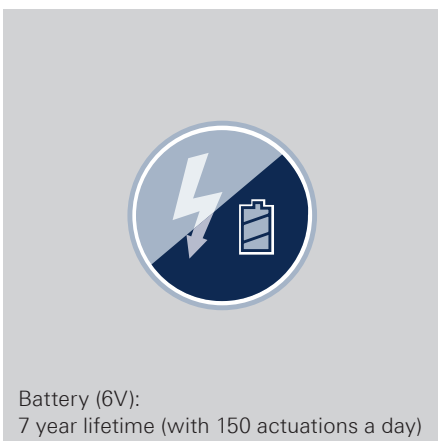
## MAXIMUM HYGIENE



## SIMPLE TO SET



## EXCELLENT EFFICIENCY



# DATA READOUT FUNCTION LETS YOU KEEP TRACK ON EVERYTHING

How often and for how long are faucets or flushers activated within a certain period of time? That's the key question in determining the correct settings for sanitary products when it comes to such essentials as meeting hygiene standards, avoiding stagnant water in supply pipes as well as optimising water and electricity consumption, not to mention preventing drains from drying out and eliminating unpleasant odours.

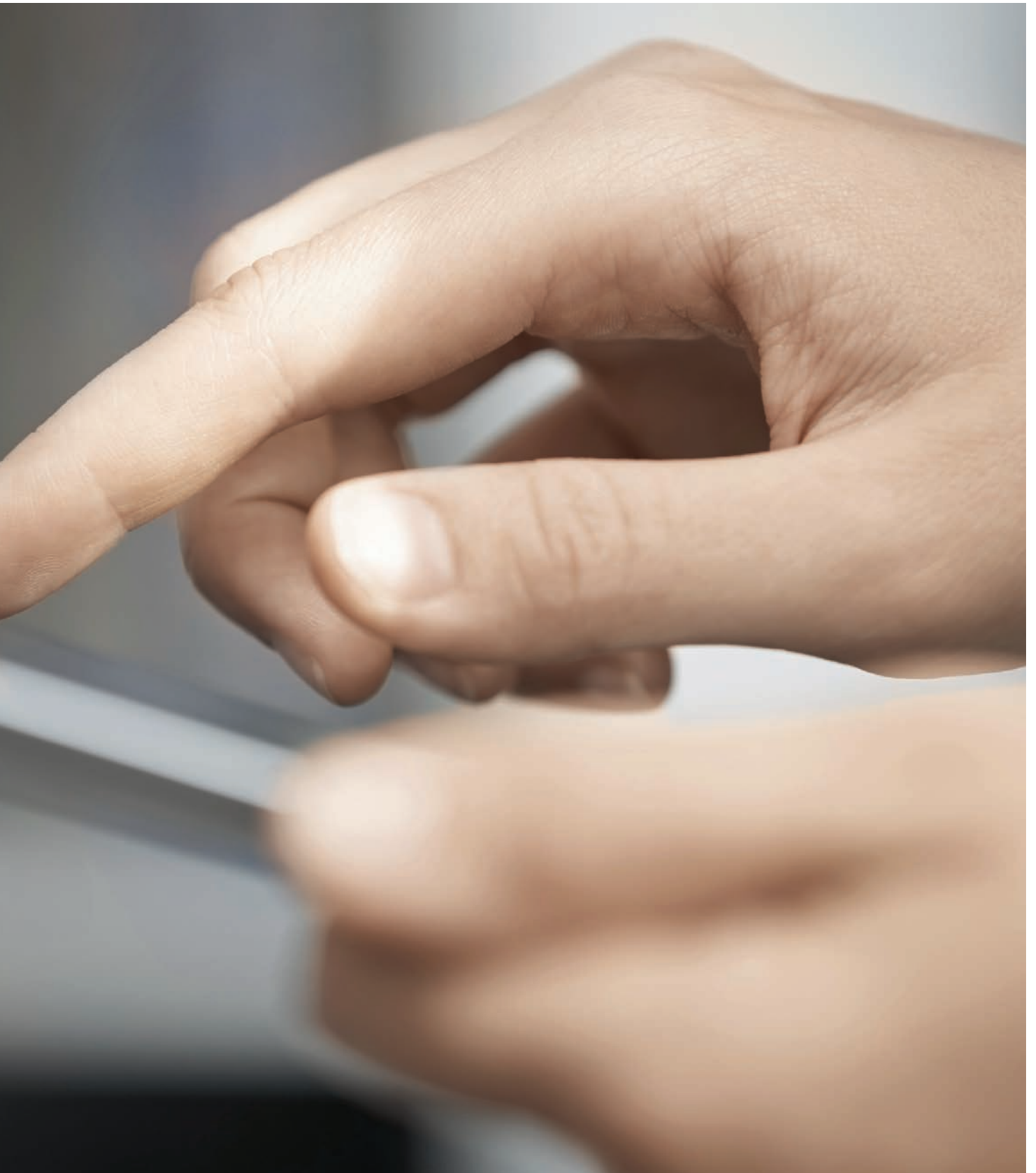
**Greater transparency.** The data readout functions deliver full transparency whenever the latest-generation GROHE infrared controls with bidirectional data exchange are activated – including pre- and automatic flushing. This information leaves no doubt about when the solenoid valve in a faucet was last opened and closed, for example, and how much water was consumed at that location.

**Planning maintenance precisely as needed.**

Maintenance staff can quickly tell whether the basic settings match actual use or whether functions such as automatic flush intervals need to be adjusted. In addition, the total running time as well as how often the solenoid valve is opened and closed indicate the degree of use and the resulting maintenance requirements.

**Additional setting options.** Many functions can be set simple and even more precise via remote control or app, such as flexible running times and flush duration for the automatic flush. Just as you would expect, controlling all the settings is simple, straightforward and intuitive.





# THE NEW REMOTE CONTROL: **SMART, STRAIGHTFORWARD, INTUITIVE**

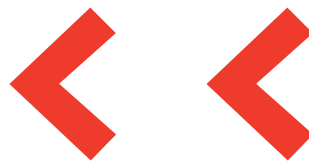
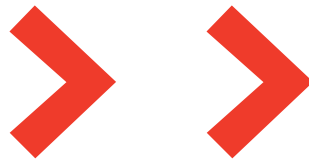
Many additional settings can be operated with the new GROHE remote control. It is intuitive and straightforward to operate and gives plumbers, caretakers or facility managers access to the products. The integrated screen clearly displays all the setting options featured in each infrared product. It enables the settings for use and total running times to be adjusted to changing needs in an instant. The menu feature a logical structure that simplifies operation – so even thermal disinfection can easily be activated just by pressing a button.

**Save time and money.** Another special feature of the new GROHE Professional remote control is the ability to access a wide range of data on the infrared products and display them on screen. This is especially important for those in charge of sanitary facility maintenance, as it gives them all the product and consumption information they need to ensure optimum long-term operation. The consumption profile can be stored in the remote control and transferred to other infrared products. Particularly in facilities fitted with numerous infrared-controlled sanitary products, this option is the ideal way to save time and optimise costs. Data readout rapidly indicates any irregularities, which simplifies maintenance. Operating costs can be calculated and reduced at each draw-off point.

**Configuration: Simply navigate to the desired function.**

The new GROHE infrared products' functions are as diverse as their operation is simple. Any user can readily deploy the full range of program options that allow the electronic faucets and flush systems to meet specific needs while operating with maximum efficiency. This includes, for example, adjusting detection zones: Whether hand or body detection (thermostat function) which is required by surgeons in operating rooms the detection option can be (individually) defined.

**Complex processes made easy.** Setting automatic flushes in order to prevent water stagnation and the odours it causes is now much simpler: Activation can be set flexibly at four-hour intervals, and the duration of each flush can also be set in 30-second intervals as desired.



# THE NEW REMOTE CONTROL AT A GLANCE

## Settings via remote control (configuration)

Setting the detection zone in 1 – 19 steps (7–20 cm)

Automatic flush

Time: According to time or use in four-hour increments  
(4–80 hours)

Flush duration: Flexible, in 30-second increments (30–600 sec.)

Thermal disinfection in one-minute increments (4–23 min.)

Activating thermal disinfection with one press of a button

Cleaning stop function with three different time settings (180, 320, 560 sec.)

Total running time of waterflow per activation (6–420 sec.)

Run-on time after leaving detection zone is individually adjustable in one-second increments (0–19 sec.)

## Service via remote control

Read out, save and load of product profile (depending on product category )

Battery charge indicator

Restore factory or user settings

Read out infrared product's software version, serial number and manufacturing date

Number of power interruptions

Switch product off / on

## Consumption data via remote control (monitoring)

Monitoring consumption and flow data

Number of thermal disinfections


Total running time

Number of times solenoid valve is opened and closed

Number of automatic flushes

Reset solenoid valve counter for maintenance




**Basin Mixer** 

CONFIGURATION

SERVICE


MONITORING

**Configuration** 

Detection zone

Running time after last detection

Maximum running time


**Configuration** 

Automatic Flushing

ACTIVATE DEACTIVATE

Runtime

Interval

**Configuration** 

Flush mode

USAGE DEPENDENT

USAGE INDEPENDENT

Short time off

ACTIVATE DEACTIVATE


Runtime

**Basin Mixer** 

CONFIGURATION

SERVICE

MONITORING

**Service** 

Model name

Software version

Serie number

Date of production

Voltage Supply

**Service** 

Power cut


Lock tap

START STOP

Test mode

START STOP

+ -

**Service** 


Profile

SAVE LOAD

Reset

FACTORY RESET


USER RESET

**Basin Mixer** 

CONFIGURATION

SERVICE

MONITORING

**Monitoring** 

Automatic flushing


Counter total

Last flush

Operations

Counter Total

since user reset

**Monitoring** 

Water consumption

Counter total

Thermal Disinfection

Counter total

since user reset



# GROHE INFRARED TECHNOLOGY WITH BLUETOOTH COMMUNICATION\*\*: MOBILE CONTROL AND MONITORING

Selected GROHE products (with 230V) with Bluetooth communication boast a special feature: They can communicate over Bluetooth with smartphones and tablets over a free to downloadable app (via Apple or Android Store), which makes it easier than ever to read out consumption data and set a variety of functions. In sanitary facilities with several faucets or WC/urinal flushers, the data from all infrared products within range are captured at once and can be read out one after the other. What's more, the draw-off points can be assigned names via an app, making maintenance more systematic.



## Improved maintenance functions via monitoring options

- Finds all products in range and read them out one after the other \*
- Password-protected access \*
- Simple product selection via the app \*
- Individual name assignment for each product \*
- Analysis of average consumption data over the past 30 days \*
- Number of automatic flushes, time of last automatic flush \*
- Consumption per day, consumption during the past 30 days \*
- Activations of thermal disinfection, last thermal disinfection \*
- Total running time of each fitting, activations of solenoid valve \*

## Convenient, user-friendly setting options

- Range setting in 1 – 19 steps (7–20 cm)
- Automatic flush
  - Time or user dependable 4 hour increments (4–80 hours)
  - Flush duration: Flexible, in 30-second increments (30–600 sec.)
  - Exact time control \*
- Thermal disinfection in one-minute increments (4–23 min.)
- Activating time-controlled thermal disinfection with one press of a button \*
- Cleaning stop function with three different time settings (180, 320, 560 sec.)
- Total running time of waterflow per activation (6–420 sec.)
- Run-on time after leaving detection zone is individually adjustable in one-second increments (0–19 sec.)

## Improved information about service and maintenance tasks

- Read out, save and load of product profile: three profiles per product category \*
- Restore factory or user settings
- Hardware and software version

\* additional features available with the app

\*\* The Bluetooth® word mark and logos are registered trademarks of the Bluetooth SIG, Inc. and are used by GROHE AG under licence. Other trademarks and brand names are the property of their owners.

## Monitoring

Washbasin Floor 2		Open and closing cycles		Open and closing cycles (30 days)	
Monitoring		Counter total	4120	Min	0 - 06.03.2016
Automatic flushing		Since Usage Reset	4120	Max	192 - 09.02.2016
Counter total	1	Last Usage Reset	---		
Next flush in	22:05	Average (in total)	96		
Last flush		Average (30 days)	95		
Date	07.03.2016	Last operation			
Time	10:53	Date	07.03.2016		
Runtime	60 sec				
Water consumption		Thermal disinfection			
Runtime (total)	133 min	Counter total	1		
Quantity (total)	758 l	Since Usage Reset	1		
Flow straightener	5,7 l/min	Last Usage Reset	---		
Operating hours total	1017 h	Last thermal disinfection			
Thermal disinfection		Date	07.03.2016		
Counter total	1	Time	13:28		
Since Usage Reset	1	Runtime	4 min		

## Configuration

Configuration		Next flush in 22:05		Start flushing --:--		Thermal disinfection runtime 4 min	
Range detection zone	6	Runtime	60 sec	Cleaning mode	<input checked="" type="checkbox"/>	<input type="range"/> <input type="button" value="START"/>	
Running time after last detection	1 sec	Interval	24 h	Runtime	180 sec		
Maximum running time	60 sec	Automatic flushing mode		Lock preset program mode	<input type="checkbox"/>	<b>Service</b> <input type="button" value="SEND"/>	
Automatic flushing	<input checked="" type="checkbox"/>	<input type="button" value="USAGE-DEPENDENT"/>	<input type="button" value="USAGE-INDEPENDENT"/>	Thermal disinfection runtime	4 min		

## Service

Service		Power cut 9		Time-controlled <input type="checkbox"/>	
Model name	BASIN MIXER	Switch product off		Test mode	<input type="button" value="START"/>
Software version	129	Direct	<input type="button" value="START"/>	FACTORY RESET	
Serial number	M018149150016	Time-controlled	<input type="checkbox"/>	USAGE RESET	
Date of production	49 15	Test mode	<input type="button" value="START"/>	<input type="button" value="SEND"/>	
		FACTORY RESET			

### System requirements

Apple\* iPhone 5/6, iPad 2/3/4/ Air/Air 2/ iPad mini 2/3  
 Apple operating system:  
 iOS 8.0 and higher (32/64 bit)  
 Android  
 4-inch display, OS 4.3.x–5.x

Mobile end devices and the GROHE Infrared Remote App\*\* are not included in delivery and must be acquired through an authorised Apple reseller/retailer/ iTunes or the Google Play Store.

\* Apple, the Apple logo, iPod, iPod Touch, iPhone and iTunes are trademarks of Apple Inc. and are registered in the USA and other countries. Apple assumes no responsibility for the functioning of this device or its compliance with safety standards and regulatory norms.  
 \*\* Available free of charge from the iTunes Store or Google Play Store.

# GROHE INFRARED TECHNOLOGY – YOUR BENEFITS

## Benefits for operators of sanitary facilities in public and commercial spaces

Reliable and durable technology with a variety of options to meet users' needs

Full transparency whenever faucets and flush systems are activated, meaning more opportunities to track and control use patterns

Easier maintenance

Enhanced safety and hygiene thanks to simplified settings for automatic flushing, thermal disinfections and cleaning stop function

More efficient and cost-effective

More sustainable thanks to lower water and electricity consumption

## Benefits for plumbers

Better access to settings and controls of faucets and flush systems

Intuitive activation and control of running times, flow rates, detection zones and other features

Easier setting of functions such as automatic flush, cleaning mode and thermal disinfection

Faster and/or simultaneous setting of entire rows of sanitary products

Enhanced service quality and easier maintenance planning

## Five-year warranty

Since GROHE products are designed to have an exceptionally long service life and are subjected to intensive, extended-use testing, we are able to offer comprehensive warranties.\*



\* We provide an extended manufacturer's warranty of five years on all our products manufactured under the GROHE brand after 1 April 2012. For the detailed terms and conditions of our warranties, please go to [www.grohe.com](http://www.grohe.com)





# GROHE INFRARED FAUCETS

## EUROPLUS E



**36 207 001**

Infrared basin faucet (6 V)  
with mixing device

**36 236 001**

with mixing device and waste set

**36 208 001**

without mixing device

**36 015 001**

Infrared basin faucet (230 V)  
with mixing device

**34 197 001**

with mixing device for low pressure

**36 016 001**

without mixing device

**36 387 000**

Infrared basin faucet  
with power box and mixing device



**36 240 001**

Infrared basin thermostat (6 V),  
wall-mounted, projection: 232 mm

**36 239 001**

projection: 264 mm



**36 210 000**

Socket for Europlus E, 25 mm

**36 209 000**

Hidden mixing device for Europlus E

Adjust settings via:



GROHE  
sensor



GROHE  
remote control



GROHE  
EcoJoy



GROHE  
StarLight®



GROHE  
CoolTouch®



GROHE  
TurboStat®



LongLife  
Battery



SmartFix



TouchFree

## EUROSMART CE



**36 327 001**  
Infrared basin faucet (6 V)  
with mixing device  
**36 331 001**  
with mixing device and waste set  
**36 330 001**  
with hidden mixing device



**36 325 001**  
Infrared basin faucet (230 V)  
with mixing device  
**36 324 001**  
with mixing device for low pressure



**36 421 000**  
L-Size  
Infrared basin faucet (230 V)  
with mixing device  
**36 422 000**  
6V  
Height mousseur 150 mm



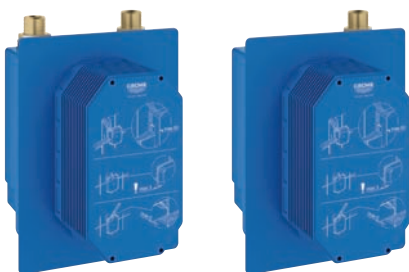
**36 335 SD0**  
Infrared basin faucet (230 V)  
wall-mounted, projection: 172 mm  
**36 334 SD0**  
projection: 232 mm  
Brass SuperSteel spout  
stainless steel escutcheon  
for concealed box 36 336 000 or 36 337 000



**36 315 000**  
Infrared basin faucet (230 V)  
wall-mounted, with mixing device  
projection: 172 mm  
**36 376 000**  
projection: 232 mm  
Chrome spout and escutcheon  
for concealed box 36 339 000



**36 386 001**  
Infrared basin faucet with power box  
and mixing device



**36 336 000**  
Concealed box with integrated  
pre-adjustable thermostatic mixer  
**36 337 000**  
Concealed box for cold or premixed water  
for 36 335 SD0 / 36 334 SD0



**36 339 000**  
Concealed box for connecting  
to mixing device  
for 36 315 000 / 36 376 000



**36 333 000**  
Infrared basin thermostat (6 V),  
wall-mounted, projection: 255 mm  
**36 332 000**  
projection: 287 mm

# GROHE INFRARED FAUCETS

## EUROECO CE



**36 271 000**  
Infrared basin faucet (6 V)  
without mixing device



**36 269 000**  
Infrared basin faucet (230 V)  
without mixing device



**36 384 000**  
Infrared basin faucet with power box  
without mixing device



**36 274 000**  
Infrared basin faucet (6 V)  
wall-mounted  
without mixing device



**36 273 000**  
Infrared basin faucet (230 V)  
wall-mounted, without mixing device  
projection: 172 mm  
Chrome spout and escutcheon  
for concealed box 36 336 000 or 36 337 000



**36 336 000**  
Concealed box with integrated  
pre-adjustable thermostatic mixer



**36 337 000**  
Concealed box for cold or premixed water

Adjust settings via:



GROHE  
sensor



GROHE  
remote control



GROHE  
EcoJoy



GROHE  
StarLight®



GROHE  
CoolTouch®



LongLife  
Battery



SmartFix



TouchFree

# GROHE INFRARED PRODUCTS FOR URINALS

## TECTRON CONCEALED URINAL



**37 324 001**  
Tectron Skate infrared control (6 V)  
**37 324 SD1**  
stainless steel



**37 337 001**  
Tectron Surf infrared control (6 V)



**38 787 000**  
Concealed box for urinal (6 V)



**37 321 001**  
Tectron Skate infrared control (230 V)  
**37 321 SD1**  
stainless steel  
**37 321 SH1**  
alpine white



**37 336 001**  
Tectron Surf infrared control (230 V)



**37 338 000**  
UP-Einbaukasten  
für Urinal 6 V oder 230 V

## FOR URINALS, EXPOSED INSTALLATION



**37 421 000**  
Tectron Rondo infrared control (6 V)



**37 751 001**  
Tectron conversion set  
for infrared control (6 V)



**37 427 000**  
Tectron Rondo infrared control conversion  
unit for 37 021 000 and variants (6 V)  
**37 428 000**  
for 37 339 000 and variants (6 V)

Adjust settings via:



GROHE  
sensor



GROHE  
remote control



GROHE  
StarLight®



LongLife  
Battery



TouchFree



# GROHE INFRARED PRODUCTS FOR WCS



**37 419 000**

Tectron Skate infrared WC plate  
for flushing cistern (230 V)  
with additional manual actuation

**37 419 SD0**  
stainless steel



**38 698 SD1**

Tectron Skate infrared WC plate  
for flushing cistern (230 V)  
stainless steel



**38 699 001**

Tectron Surf infrared WC plate  
for flushing cistern (230 V)



**38 393 SD1**

Tectron Skate infrared WC plate  
for flush valve (230 V)  
stainless steel

Adjust settings via:



GROHE  
sensor



GROHE  
remote control



GROHE  
StarLight®



EasyConnect



TouchFree

# GROHE FAUCETS

## WITH BLUETOOTH COMMUNICATION



**36 411 000**  
Europlus E  
infrared basin faucet (230 V)  
with mixing device for app



**36 413 000**  
Eurosmart Cosmopolitan E  
infrared basin faucet (230 V)  
with mixing device for app



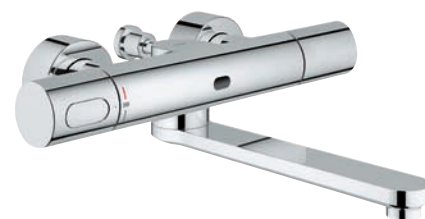
**36 409 000**  
Euroeco Cosmopolitan E  
infrared basin faucet (230 V)  
without mixing device for app



**36 410 000**  
Eurosmart Cosmopolitan E  
infrared basin faucet (230 V)  
without mixing device for app  
projection: 172 mm  
for concealed box 36 336 000 and 36 337 000



**36 412 000**  
Eurosmart Cosmopolitan E  
infrared basin faucet (230 V)  
wall-mounted, with mixing device for app,  
projection: 172 mm  
for concealed box 36 339 000



**36 414 000**  
Eurosmart Cosmopolitan E  
infrared basin thermostat (230 V)  
wall-mounted, for app, projection: 287 mm  
**39 383 000**  
Rough-in for 36 414 000



**36 336 000**  
Concealed box with integrated  
pre-adjustable thermostatic mixer  
for 36 410 000



**36 337 000**  
Concealed box for cold or premixed water  
for 36 412 000



**36 339 000**  
Concealed box for connecting  
to mixing device  
for 36 412 000

Adjust settings via:



GROHE  
sensor



GROHE  
remote control



GROHE  
Bluetooth



GROHE  
EcoJoy



GROHE  
StarLight®



GROHE  
CoolTouch®



GROHE  
TurboStat®



SmartFix



TouchFree

# GROHE SHOWER AND FLUSHING SYSTEMS

## WITH BLUETOOTH COMMUNICATION SHOWER



**36 415 000**  
Eurosmart Cosmopolitan E  
infrared shower control  
wall-mounted, (230 V)  
without mixing device for app  
for concealed box 36 416 000



**36 416 000**  
Concealed box with thermostatic mixer

## WC



**37 504 000**  
Tectron Skate  
infrared WC plate  
for flushing cistern (230 V)  
with additional manual actuation for app



**37 505 SD0**  
Tectron Skate  
infrared WC plate  
for flushing cistern (230 V)  
for app  
stainless steel

## URINAL



**37 503 000**  
Tectron Skate  
infrared control (230 V)  
for app



**37 338 000**  
Concealed box for urinal 6 V or 230 V



**39 369 000**  
Temperature sensor (230 V)  
for app  
to be combined with Rapid SL 39 376 000

Adjust settings via:



GROHE  
sensor



GROHE  
remote control



GROHE  
Bluetooth



GROHE  
StarLight®



EasyConnect



TouchFree

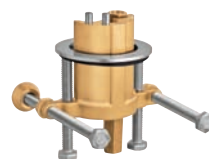
# GROHE ACCESSORIES



**36 407 001**  
Remote control for all GROHE  
infrared fittings  
incl. demo mode



**36 133 000**  
Theft-proof mousseur  
with key 7,5 - 9,0 l/min at 3 bar



**36 276 000**  
Rotation lock for Eurosmart Cosmopolitan E



**34 487 000**  
Grotherm Micro under-basin thermostat



**45 704 000**  
Connection set Grotherm Micro  
for fittings without mixing



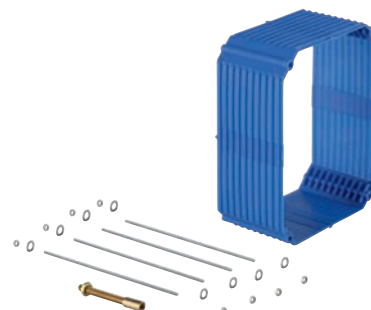
**47 533 000**  
Connection set Grotherm Micro  
for fittings with mixing



**36 338 000**  
Switch-mode power supply  
for concealed socket



**36 340 000**  
Extension cable, 3 m  
**36 341 000**  
10 m



**38 896 000**  
Extension set, 50 mm  
for 37 338 000 and 38 787 000

Grohe AG  
Feldmühleplatz 15  
D - 40545 Düsseldorf  
Germany



© 05/2016 – Copyright by GROHE

# DISCOVER THE WORLD OF GROHE AT [WWW.GROHE.COM](http://WWW.GROHE.COM)



Follow us



PART OF **LIXIL**