

# DEFINING THE DIGITAL EXPERIENCE



**GROHE**  
SPA



**UNIDOMO®**

**Web:** [www.unidomo.de](http://www.unidomo.de)

**Telefon:** 04621- 30 60 89 0

**Mail:** [info@unidomo.com](mailto:info@unidomo.com)

**Öffnungszeiten:** Mo.-Fr. 8:00-17:00 Uhr

**VIESMANN**

**Buderus**

 **Vaillant**

**WOLF**

 **JUNKERS**  **BOSCH**

 **remeha**




 **DAIKIN**

**ROTEX**

a member of DAIKIN group



-  Individuelle Beratung
-  Kostenloser Versand
-  Hochwertige Produkte

-  Komplettpakete
-  Über 15 Jahre Erfahrung
-  Markenhersteller

# ENJOY GROHE SPA™

Once a room for cleansing and grooming, the bathroom is now a place to retreat to – your sanctuary from the outside world; a place to spend quality time indulging yourself. The amount of space dedicated to the bathroom has increased and defining different zones is fast becoming the norm.

A new bathroom is now an investment in your health and wellbeing; let GROHE F-digital transform your daily rituals into sensational experiences.







# DEFINING THE DIGITAL EXPERIENCE GROHE F-DIGITAL

The award winning design of GROHE F-digital unites simple operation and freedom of choice with German engineering and design. Luxurious personalised experiences, thermostatic showers and intuitive digital controls, which can be mounted wherever you choose, combine to create the indulgent bathroom experience you desire.

## **Simple, Intuitive and Precise**

Simple, intuitive, precise control, the perfect temperature and the luxury of saving your preferred settings with a single touch; GROHE F-digital will change your perception of brassware and showers.

## **Design and Planning Freedom**

GROHE F-digital offers maximum design and planning freedom; with wireless technology, any pressure solutions and a full range of coordinating products for the shower, bathtub, basin and bidet, you can plan your bathroom exactly as you wish.

## **German Engineering and Design**

For GROHE F-digital functional technology and award winning design go hand-in-hand; extensive lifetime testing, innovative GROHE technologies and intuitive controls combine to provide you with a truly exceptional experience.



reddot design award  
best of the best 2011



# SIMPLE, INTUITIVE AND PRECISE CONTROL AT YOUR FINGERTIPS

Uniting simple operation with the latest wireless technology, both the metal Digital Controller and Digital Diverter can be fixed in the position that is most convenient for you: on the wall, on the edge of the bathtub or basin and even on a glass shower screen.

## DIGITAL WIRELESS CONTROLLER IT'S AS EASY AS ONE, TWO, THREE

1. Press the on/off button to turn on the shower or basin mixer.
2. Use the plus (+) and minus (-) buttons to increase or decrease the temperature.  
A ring of coloured light on the controller gives you visual feedback as you change the water temperature.
3. Turn the ring which surrounds the controller to adjust the water flow.



## DIGITAL WIRELESS DIVERTER ENHANCE YOUR SHOWER EXPERIENCE

Alternating between hand shower, head shower and side showers (bath tub) has never been easier. Just press the corresponding button on the metal diverter to start or stop the water flow.



Shower Diverter



Bath Diverter



# GROHE TECHNOLOGY GERMAN ENGINEERING

GROHE F-Digital fuses award-winning design with reliable GROHE technologies. Simple, intuitive, precise operation with smart features such as warm up mode and memory function. Relax, knowing that the water temperature will always be exactly to your liking – thanks to our best-in-class thermostat technology.

## UNIQUE FEATURES AT THE PUSH OF A BUTTON



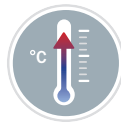
### Memory Function

Actual settings are saved and recalled every time the basin mixer or shower is switched on again. One touch bath fill to your preset level and temperatures.



### Pause Function

Pause the water flow and restart it with exactly the same flow rate and temperature – saving water and energy e.g. while shampooing.



### Warm-Up Mode

When pre-set temperature is reached water supply stops automatically and the illuminated ring flashes – ready to step into your perfect shower.



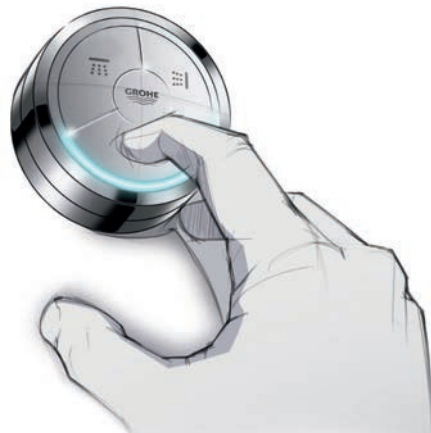
### SafeStop

Safety lock protects against scalding. Safe thermostatic showering every time.

## AWARD-WINNING DESIGN



reddot design award  
best of the best 2011



## INNOVATIVE TECHNOLOGIES



**GROHE Digital®**  
Digital technology for effortless control and outstanding comfort.



**GROHE EcoJoy™**  
Integrated water-saving technology reduces water and energy consumption without compromising on design, performance and product enjoyment.



**GROHE TurboStat®**  
Always the right temperature. Reacts instantly to changes in water pressure.



**GROHE StarLight®**  
A radiant chrome finish that resists soiling and tarnishing for enduring pristine looks.

## FLEXIBLE INSTALLATION

### **Plug and play**

For ease of installation, mixing units are pre-synchronised with the corresponding controller and feature 'plug and play' connections to the water pipes.

### **Digital thermostatic mixer**

Digital thermostatic mixing units for the bathtub and shower can be located up to 6 m away from the bath or shower fittings, giving you the freedom to plan your bathroom exactly as you wish.

### **Digital twin valve mixer**

For the basin and bidet, the digital twin valve mixer is small enough to fit beneath the basin.

# YOUR DIGITAL BATHROOM

Style, functionality and a wealth of products to choose from. Thanks to the modular design of the collection, precise and intuitive digital control is available for all points of interaction in the bathroom.



## Basin

Wall-mounted and deck-mounted basin spouts are combined with the digital controller, which can be positioned on the wall or on the ceramic.



## Bathub

For a minimalist look choose a freestanding bath spout, or enjoy the added benefits of a hand shower with our integrated bath/shower combinations.



## Shower

Whether it's a single hand shower or a bespoke GROHE SPA™ shower, with head shower, hand shower and side showers, we have a digital solution to match.

# ENJOY FLEXIBILITY BASIN AND BATHTUB SOLUTIONS

The Digital Controller and Digital Diverter bring the convenience of wireless, simplicity and coordinated design to your bathroom.

Providing one-touch operation to the basin and full bathroom flexibility from a single freestanding bath spout to integrated solutions featuring a hand shower, bath spout and filler, GROHE F-Digital introduces a new level of luxury and enhances your bathing enjoyment.



## **Convenient operation**

As the spout and the mixing unit are digitally connected, the Digital Controller can be positioned on the wall, on the ceramic or on the countertop.

## **Save your preferred setting**

Experience comfort like never before. Use the memory function to save your individual combination of water temperature and flow.

## **Digital sustainability**

Time the water flow to suit your individual requirements and needs and save water.



## **For all styles of basin**

Wall-mounted and deck-mounted basin spouts have been designed to accommodate all styles and sizes of basin.

## **Automatic bath filling**

A true GROHE SPA™ detail; the automatic bath filling feature will fill the bath for you to your pre-set temperature and water level.

## **Fill the bathtub twice as fast<sup>1</sup>**

For large bathtubs, combine a bath spout with a bath filler. The Digital Diverter allows you to open both outlets at the same time, so the bath can be filled faster.



# ENJOY FLEXIBILITY SHOWER SOLUTIONS

From a simple shower renovation project to a fully-integrated hydrotherapy shower, GROHE F-digital includes a multitude of showering options. The wireless Digital Controller and Digital Diverter connect remotely to a thermostatic mixing unit, for accurate temperature control, safe thermostatic showering, greater showering comfort and enhanced design freedom.

## **Warm-Up Mode**

The light on the Digital Controller flashes when your pre-selected temperature is reached, so you'll know exactly when your shower is ready.

## **Pause**

When you want to shampoo your hair or apply an exfoliating body scrub, just press the 'Pause' button and the system will memorise your current settings. Press the button again to restart the water at the exact same temperature and flow.

## **Digital Diverter**

Manage up to three shower outlets, e.g. a head shower, a hand shower and a row of side showers with a single Digital Diverter. The outlets can be selected separately or in parallel.

## **Add a second controller**

Start your shower without getting wet. It is possible to add a second Digital Controller to your shower and place it outside the shower area.

## **SafeStop**

A safety lock is factory-set at 38°C to prevent the temperature from being accidentally being raised above this level. The limit can be adjusted, according to your needs.

## **The perfect temperature**

For your safety, comfort and enjoyment all GROHE Digital shower and bathtub fittings are connected to a digital thermostatic mixer. Featuring GROHE TurboStat® technology, the thermostat reacts instantly to any changes in the incoming hot and cold water supplies, to ensure the temperature you select remains constant for the duration of your shower.



# DESIGN AND PLANNING FREEDOM

The modular design of the Digital Controller and Digital Diverter facilitates design coordination throughout the bathroom; suitable for use with any range from the GROHE F-Digital collection provides you with unique design freedom.

## GROHE F-DIGITAL COLLECTION



GROHE ALLURE



GROHE VERIS



GROHE RAINSHOWER®



# GROHE ALLURE F-DIGITAL



**36 349 000** 1 2 3 4 5  
Digital Bath/Shower Controller HP

**36 350 000** 1 2 3 4 5  
Digital Controller for Bath or Shower LP



**36 344 000** 1 2 3 4 5  
Digital Controller and Bath Diverter HP

**36 352 000** 1 2 3 4 5  
Digital Controller and Shower Diverter HP

**36 347 000** 1 2 3 4 5  
Digital Controller and Bath Diverter LP

**36 353 000** 1 2 3 4 5  
Digital Controller and Shower Diverter LP



**40 548 000 + 36 289 000** 1 2 3 4 5  
Holder Plate +  
Digital Controller and Bath Diverter HP

**40 548 000 + 36 295 000** 1 2 3 4 5  
Holder Plate +  
Digital Controller and Shower Diverter HP



**36 342 000** 1 2 3 4 5  
Digital basin mixer HP



**36 343 000** 1 2 3 4 5  
Digital basin mixer  
wall mounted HP



**36 346 000** 1 2 3 4 5  
Digital bidet mixer HP



GROHE Digital®



GROHE EcoJoy®



GROHE StarLight®



GROHE TurboStat®



GROHE CoolTouch®



GROHE DreamSpray®



**13 218 000**  
Bath spout  
floor mounted



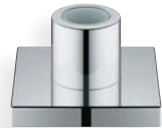
**13 335 000**  
Bath spout



**13 315 000**  
Bath spout  
deck mounted



**19 952 000**  
Talentofill



**27 930 000**  
Shower support with integrated hose

1



2



3



4



5



# GROHE VERIS F-DIGITAL



**36 292 000** 3 4 5 6 7  
Digital Bath/Shower Controller HP

**36 293 000** 3 4 5 6 7  
Digital Controller for Bath or Shower LP



**36 289 000** 3 4 5 6 7  
Digital Controller and Bath Diverter HP

**36 295 000** 3 4 5 6 7  
Digital Controller and Shower Diverter HP

**36 290 000** 3 4 5 6 7  
Digital Controller and Bath Diverter LP

**36 296 000** 3 4 5 6 7  
Digital Controller and Shower Diverter LP



**40 479 000 + 36 289 000** 3 4 5 6 7  
Holder Plate + Digital Controller  
and Bath Diverter HP

**40 479 000 + 36 295 000** 3 4 5 6 7  
Holder Plate + Digital Controller  
and Shower Diverter HP



**36 277 000** 1 2 3 4 5 6 7  
Digital basin mixer HP



**36 278 000** 1 2 3 4 5 6 7  
Digital basin mixer  
wall mounted HP



**36 286 000** 1 2 3 4 5 6 7  
Digital bidet mixer HP



GROHE Digital®



GROHE EcoJoy®



GROHE StarLight®



GROHE TurboStat®



GROHE CoolTouch®



GROHE DreamSpray®



**13 245 000** 2 5 7 8  
Bath spout  
floor mounted



**13 292 000** 2 5 7 8  
Bath spout  
deck mounted



**13 242 000** 2 5 7 8  
Bath spout



**27 532 000**  
Extractable hand shower  
with integrated shower hose and support



**19 952 000**  
Talentofill

1



2



3



4



5



6



7



8



# GROHE SHOWERING F-DIGITAL



**27 470 000**  
Rainshower® Veris  
head shower 300 mm x 150 mm

**27 861 000**  
Rainshower® Veris  
ceiling shower 300 mm x 150 mm



**27 184 000**  
Hand shower



**28 161 000**  
Shower hose 1500mm



**27 188 000**  
Hand shower holder



**27 190 000**  
Shower outlet elbow



GROHE Digital®



GROHE EcoJoy®



GROHE StarLight®



GROHE TurboStat®



GROHE CoolTouch®



GROHE DreamSpray®



**28 778 000**  
Rainshower® Head shower Jumbo  
400 mm

**27 193 000**  
Rainshower® Ceiling shower Jumbo  
400 mm



**27 477 000**  
Rainshower® Head shower  
310 mm

**27 478 000**  
with 9.4 l/min. flow limiter



**28 368 000**  
Rainshower® Head shower  
210 mm



**28 034 000**  
Hand shower



**27 074 000**  
Wall hand shower holder  
with round escutcheon

# GROHE SHOWERING F-DIGITAL



**27 286 000** <sup>4</sup>  
Rainshower® F-series 20"  
ceiling shower 508 mm x 508 mm



**27 467 000**  
Rainshower® F-series 10"  
ceiling shower 254 mm x 254 mm



**27 271 000**  
Rainshower® F-series 10"  
head shower 254 mm x 254 mm



**27 253 000**  
Rainshower® F-series 5"  
head shower 127 mm x 127 mm  
wall mounted



**27 251 000** <sup>4</sup>  
Rainshower® F-series 5"  
side shower 127 mm x 127 mm  
incl. concealed body



GROHE Digital®



GROHE EcoJoy®



GROHE StarLight®



GROHE TurboStat®



GROHE CoolTouch®



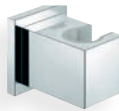
GROHE DreamSpray®



**27 884 001**  
Euphoria Cube+  
Metal hand shower



**28 388 000**  
Silverflex shower hose 1750mm



**27 693 000**  
Euphoria Cube+  
Wall hand shower holder



**27 704 000**  
Shower outlet elbow

1



2



3



4



5



6





# GROHE RAINSHOWER® F-DIGITAL



**36 292 000** 4 5 6 7 8  
Digital Bath/Shower Controller HP

**36 293 000** 3 4 5 6 7  
Digital Controller for Bath or Shower LP



**36 289 000** 4 5 6 7 8  
Digital Controller and Bath Diverter HP

**36 295 000** 4 5 6 7 8  
Digital Controller and Shower Diverter HP

**36 290 000** 4 5 6 7 8  
Digital Controller and Bath Diverter LP

**36 296 000** 4 5 6 7 8  
Digital Controller and Shower Diverter LP



**36 298 000** 4 5 6 7 8  
Rainshower® F-digital Shower Set HP

**36 305 000** 4 5 6 7 8  
Rainshower® F-digital Shower Set + Ceiling Shower HP

**36 307 000** 4 5 6 7 8  
Rainshower® F-digital Solo Ceiling Shower LP

**36 303 000** 4 5 6 7 8  
Rainshower® F-digital Solo Shower LP



**27 430 000**  
Rainshower® Solo Diverter System



GROHE Digital®



GROHE EcoJoy®



GROHE StarLight®



GROHE TurboStat®



GROHE CoolTouch®



GROHE DreamSpray®



**27 436 000**

Head shower  
chrome plated spray plate

**27 438 000**

with 9.4 l/min. flow limiter



**27 380 000**

Rainshower® Solo 100  
Shower wallholder set



**27 272 000** *1 2 3 4 5*

Rainshower® Solo 145

Hand shower

Spray patterns: Rain spray, Smart Rain

**27 278 000** *1 2 3 4 5*

with 9.4 l/min. flow limiter

1



2



3



4



5



6



7



8



# FREQUENTLY ASKED QUESTIONS

LOTS OF SATISFYING ANSWERS.

## USAGE

---

**What are the key benefits of GROHE F-Digital?**

- Maximum design and planning freedom due to wireless technology.
- Perfect ergonomics according to your personal needs.
- Intuitive operation, personalised solutions.
- Intelligent features that facilitate everyday routines in your bathroom.

---

**Is it necessary to connect the Digital Controller/Digital Diverter with the Digital mixing units?**

No. The Digital mixing units are pre-synchronised with the corresponding Digital Controller/Digital Diverter when delivered to ensure ease of installation.

---

**How can the Digital Controller & Digital Diverter be fixed? Is it obligatory to mount them stationary?**

They can be fixed either with screws or by adhesive strips which are part of the product package. Fixation with screws is recommended. Yes, it is recommended to mount them on a surface to ensure usability and perfect ergonomics. Otherwise the outer ring for water flow adjustment can not be easily turned.

---

**Is it possible to mount the Digital Controller/Digital Diverter directly on a surface without the chromed holder plates?**

Yes. A detailed description of how to mount the Digital Controller/Digital Diverter can be found in the TPI. The Veris and Allure chrome holder plate is a decorative element and can be optionally mounted for aesthetic reasons.

---

**What is the battery life?**

The battery life depends on the frequency of use – for a four-person household the average battery life is about 1,5 years.

---

**Is there a risk that different Digital Controller/Digital Diverter can interfere with each other if installed in close proximity?**

No, each Digital Controller/Digital Diverter has its own identification number which prevents each interfering with the other.

---

<b>What type of batteries are being used for the Digital Controller/Digital Diverter and how? What is the battery lifetime?</b>	Standard battery type is CR2450 (x3) – do not use rechargeable batteries. Battery lifetime varies from frequency of use – based on 80 actuations a day a battery can last between 2-3 years. (estimated).
<b>Is there an indication of low battery capacity?</b>	Low battery capacity is indicated by a shorter display duration of the illuminated ring on the Digital Controller/Digital Diverter. When losing battery life the light duration decreases from 1 second to 0.5 to 0.2 seconds.
<b>When replacing the batteries will the Digital Controller/Digital Diverter need to be reset to work with the mixing unit? Will all my settings still be saved?</b>	No, the Digital Controller/Digital Diverter remains paired with the mixing unit. The settings are saved in the internal memory of the mixing unit and therefore are not lost.
<b>Are the Digital Controller/Digital Diverter waterproof?</b>	If dropped in no more than 1m of water for no longer than approximately 30 minutes the Digital Controller/Digital Diverter remains waterproof. Both are protected according to protection class IP55 against dust and water jets.
<b>Is it possible to select more than one outlet with the Digital Diverter?</b>	With the High Pressure diverter variant yes it is possible to select three outlets at the same time. However, with the Low Pressure variants it is NOT possible to select three outlets at the same time.
<b>What is the maximum remote distance between the Digital Controller/Digital Diverter and the mixing unit?</b>	Puk to gateway 5m (max) Gateway to valve 10m (max) Valve to transformer 6m (max)
<b>Is there an indication if the Digital Controller is out of reach?</b>	Yes. In case of the Digital Controller being out of reach or not connected with power the illuminated ring flashes white 3 times.



GROHE Limited  
Blays House  
Wick Road  
Englefield Green  
Egham  
Surrey TW20 OHJ

Tel +44 (0) 871 200 3414

Fax +44 (0) 871 200 3415

For more information on our award-winning designs  
go to [grohe.co.uk](http://grohe.co.uk)

04/2012 - Copyright by GROHE



Follow us

