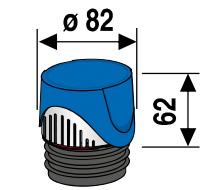
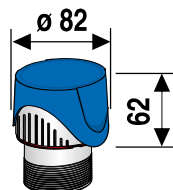


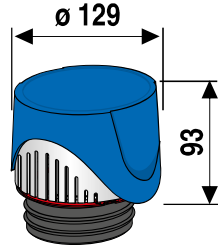
# Montage - Installation



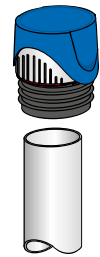
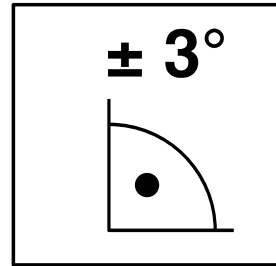
DN 30 - 50



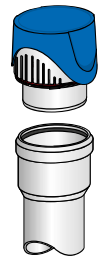
G 1 1/2  
DN 40-50



DN 70 - 100



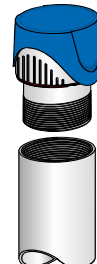
DN 30



DN 40



DN 50



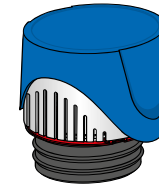
G 1 1/2



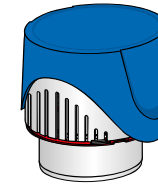
DN 40



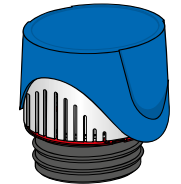
DN 50



DN 70



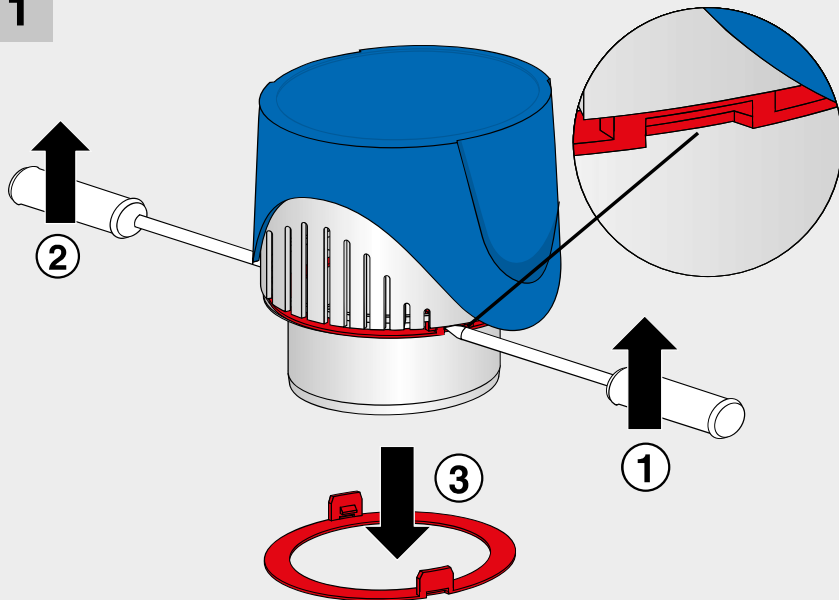
DN 90



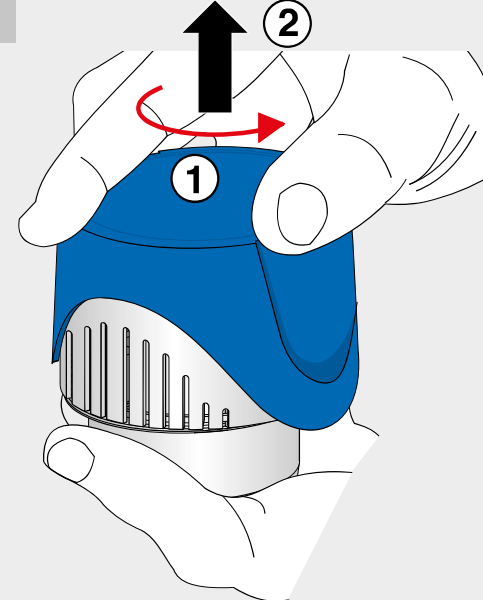
DN 100

# Wartung/Inspektion - Service

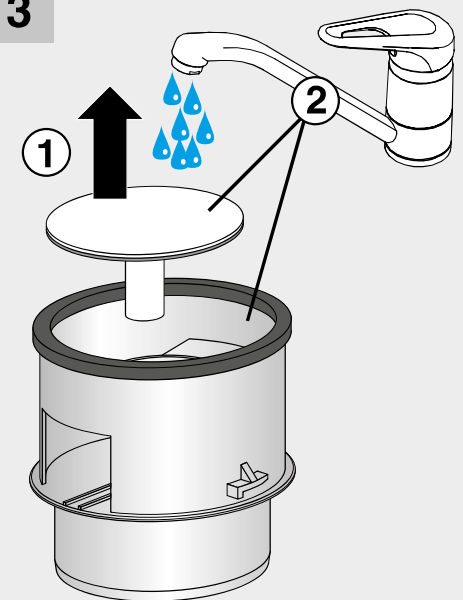
1



2



3





**UNIDOMO®**

**Web:** [www.unidomo.de](http://www.unidomo.de)

**Telefon:** 04621- 30 60 89 0

**Mail:** [info@unidomo.com](mailto:info@unidomo.com)

**Öffnungszeiten:** Mo.-Fr. 8:00-17:00 Uhr

**VIESSMANN**

**Buderus**

 **Vaillant**

**WOLF**

 **JUNKERS**  **BOSCH**

 **remeha**

 **DAIKIN**

**ROTEX**

a member of DAIKIN group



-  Individuelle Beratung
-  Kostenloser Versand
-  Hochwertige Produkte

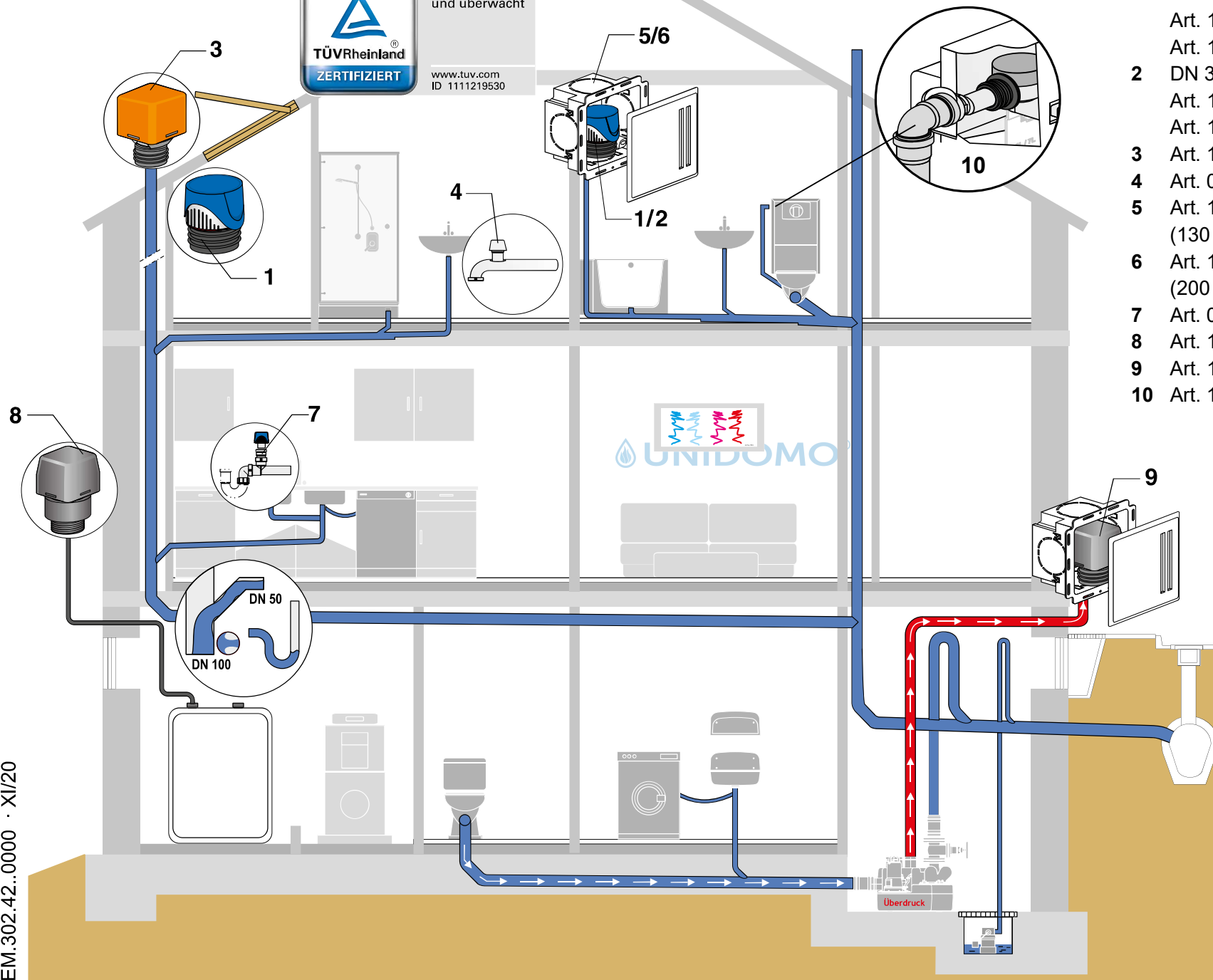
-  Komplettpakete
-  Über 15 Jahre Erfahrung
-  Markenhersteller

# ventilair®

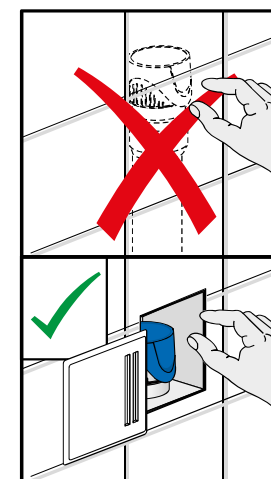
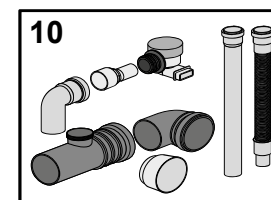


Bauart geprüft  
und überwacht

www.tuv.com  
ID 1111219530



- 1 DN 70-100  
Art. 11.A21.00..0099  
Art. 11.021.00..S001 (Version CH)
- 2 DN 30-50  
Art. 11.A20.00..0099  
Art. 11.020.00..S001 (Version CH)
- 3 Art. 11.A23.00..0099
- 4 Art. 03.091.00..0000
- 5 Art. 17.270.01..0099  
(130 x 150 x 93 = DN 30-50)
- 6 Art. 17.271.01..0099  
(200 X 210 X 133 = DN 70-100)
- 7 Art. 03.001.00..0099
- 8 Art. 11.A24.00..S099
- 9 Art. 11.A24.00..0099
- 10 Art. 11.030.00..0099



EM.302.42..0000 · XI/20