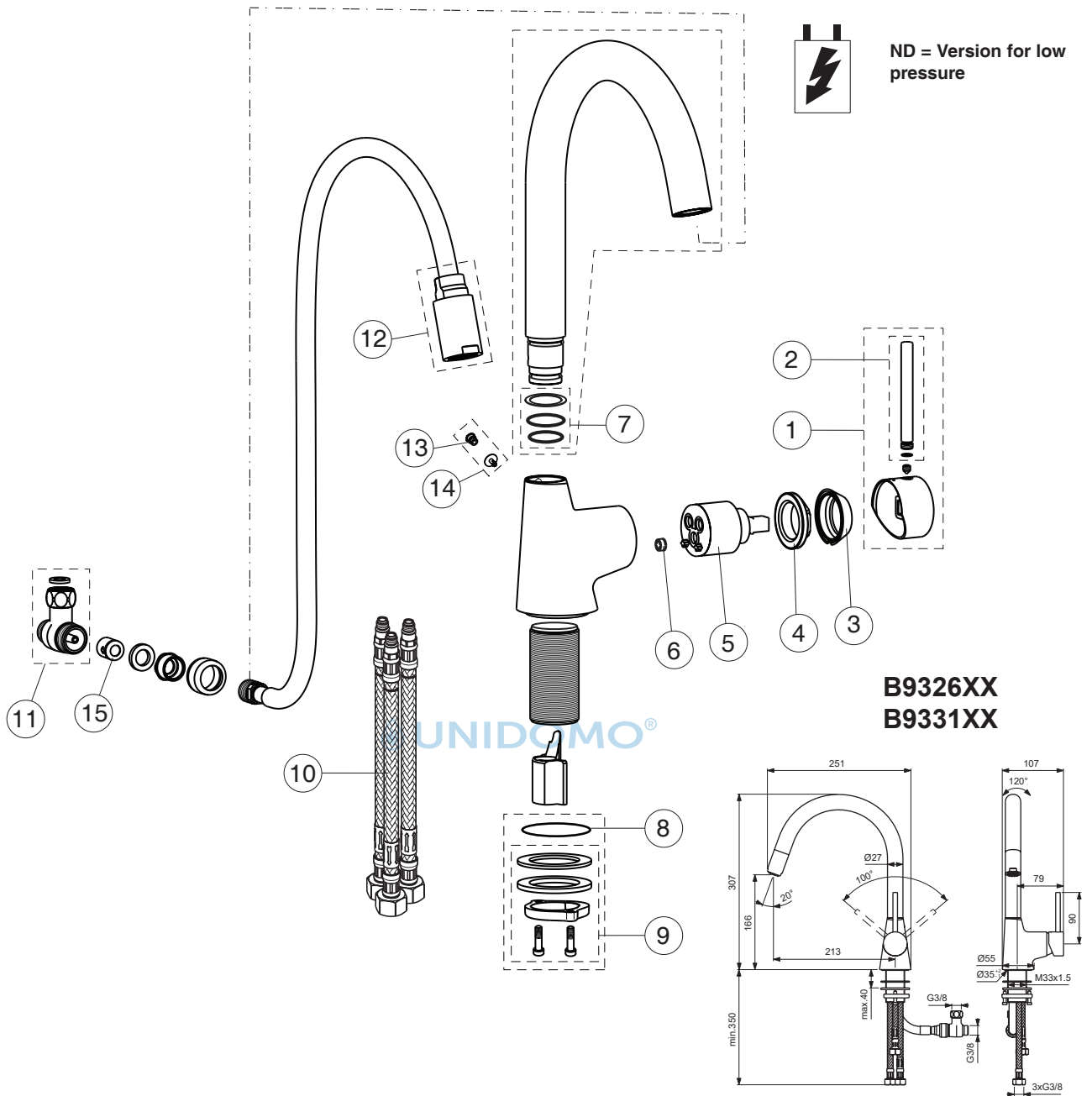




NORA

Ideal Standard



**For XX=Coverage-Designate:**  
AA=chrome, GN=ultra steel

**For Instance:**  
B960909AA for chrome  
B960909GN for ultra steel

| Pos. | Signify                   | Spare parts-Nr. | Quantity | Pos. | Signify              | Spare parts-Nr. | Quantity |
|------|---------------------------|-----------------|----------|------|----------------------|-----------------|----------|
| 1    | Lever,w/logo-compl.       | B960909XX       | 1 Set    | 14   | Screw and cap-compl. | B960297XX       | 1 Set    |
| 2    | Small handle for handle   | B960719XX       | 1 Pcs.   | 15   | Non return valve     | B961346NU       | 1 Pcs.   |
| 3    | Cap                       | B961473XX       | 1 Pcs.   |      |                      |                 |          |
| 4    | Screw M38x1               | B961569NU       | 1 Pcs.   |      |                      |                 |          |
| 5    | Flow regulator 5 l/min    | H961506NU       | 1 Pcs.   |      |                      |                 |          |
| 6    | Cartridge Ø35mm           | B961477NU       | 1 Pcs.   |      |                      |                 |          |
| 7    | Sealing set for tub.spout | B960914NU       | 1 Set    |      |                      |                 |          |
| 8    | O-Ring Ø42.52x2.62        | A960276NU       | 1 Pcs.   |      |                      |                 |          |
| 9    | Connecting group          | B960255NU       | 1 Set    |      |                      |                 |          |
| 10   | Fl.hose G3/8,M8x1/L620    | B960364NU       | 1 Pcs.   |      |                      |                 |          |
|      | Fl.hose G3/8,M8x1/L500    | A962005NU       | 1 Pcs.   |      |                      |                 |          |
| 11   | T-Stueck                  | A962630NU       | 1 Pcs.   |      |                      |                 |          |
| 12   | Pull-down spray 1F        | B960913XX       | 1 Pcs.   |      |                      |                 |          |
| 13   | Screw M5x5.5              | A960058NU       | 1 Pcs.   |      |                      |                 |          |



**UNIDOMO®**

**Web:** [www.unidomo.de](http://www.unidomo.de)

**Telefon:** 04621- 30 60 89 0

**Mail:** [info@unidomo.com](mailto:info@unidomo.com)

**Öffnungszeiten:** Mo.-Fr. 8:00-17:00 Uhr

**VIESSMANN**

**Buderus**

 **Vaillant**

**WOLF**

 **JUNKERS**  **BOSCH**




 **remeha**




 **DAIKIN**

**ROTEX**

a member of DAIKIN group



-  Individuelle Beratung
-  Kostenloser Versand
-  Hochwertige Produkte

-  Komplettpakete
-  Über 15 Jahre Erfahrung
-  Markenhersteller