

Raindance
27876XX1

hansgrohe



Ihr Online-Fachhändler für:

hansgrohe

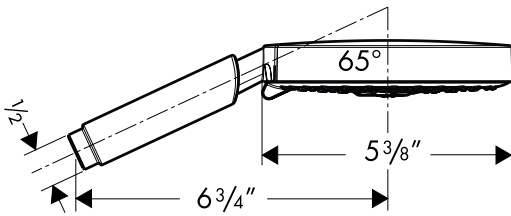
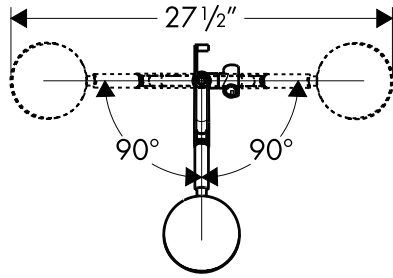
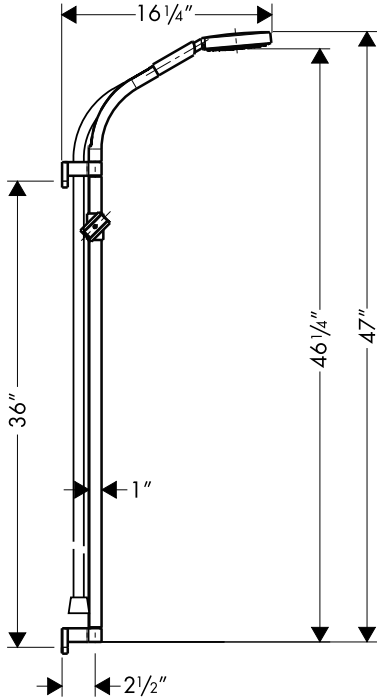
- Kostenlose und individuelle Beratung
- Hochwertige Produkte
- Kostenloser und schneller Versand

- TOP Bewertungen
- Exzelerter Kundenservice
- Über 20 Jahre Erfahrung



E-Mail: info@unidomo.de | Tel.: 04621 - 30 60 89 0 | www.unidomo.de

Raindance Wallbar with S 150 3-Jet Handshower
27876XX1



Rain AIR

Balance AIR

Whirl AIR

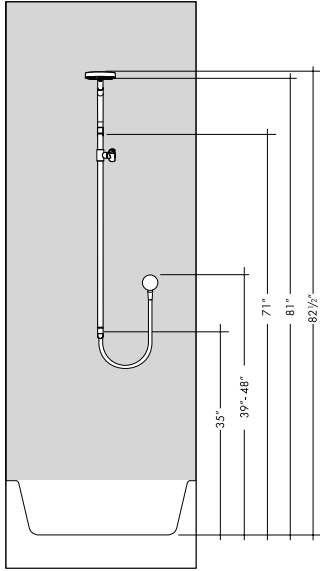
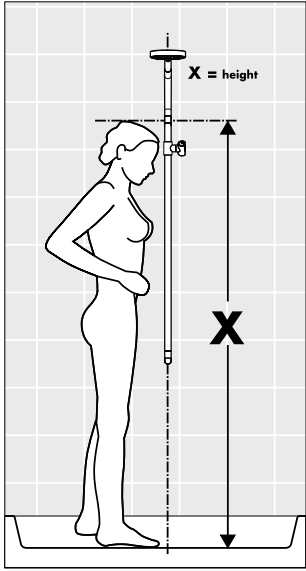


Product Specification

Max. flow rate 2.5 gpm

Requires wall outlet (not included)

Protection against back siphonage not included -- Hansgrohe suggests using wall outlet with integral vacuum breaker 27458XX1 or accessory vacuum breaker 06510XX0.

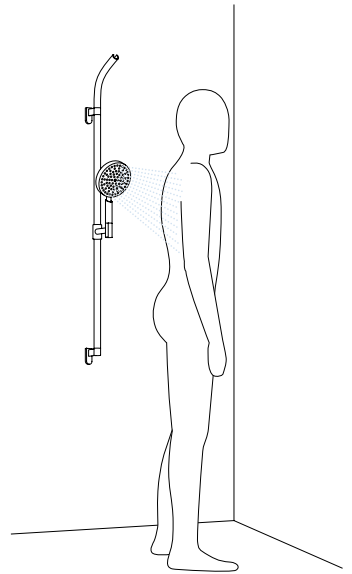
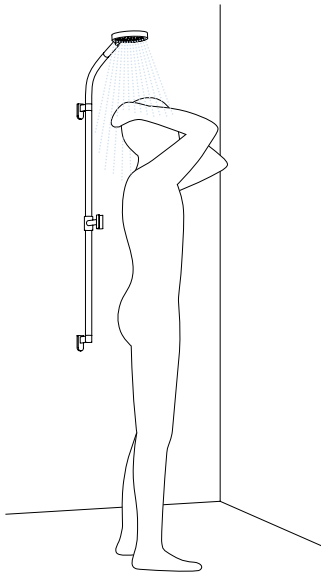
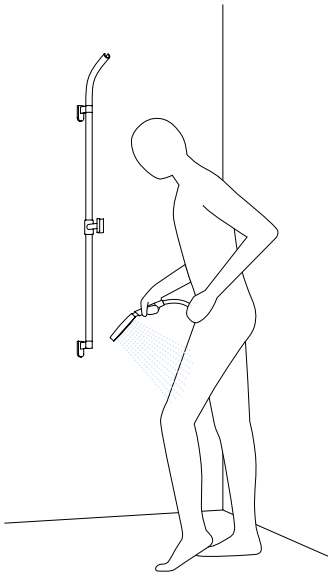


Suggested installation

The measurements shown are approximate, and are based on a customer height of 5'11".

The wall outlet shown is for illustration purposes only. It is not included with this set.

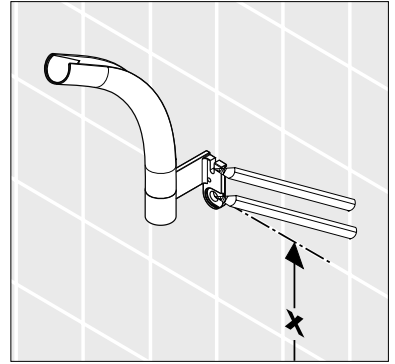
Suggested Uses



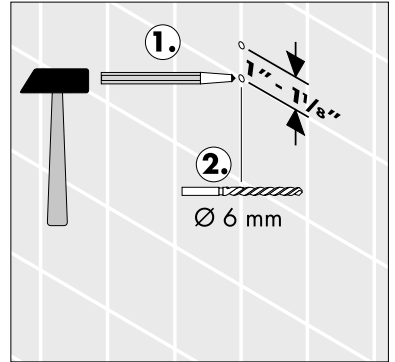
Installation

Position the upper wall support at the desired mounting height ("X"). Mark the positions of the screw holes.

Put the upper wall support away in a safe place.

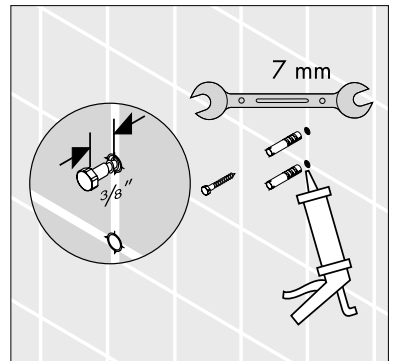


Dimple the tile (1). Drill the holes with a 6 mm bit suitable for the wall surface (2).

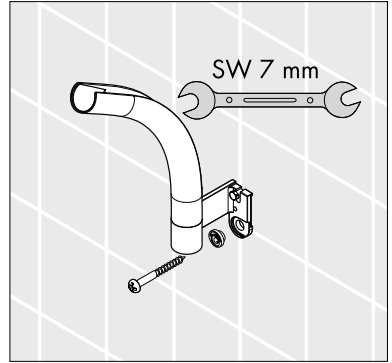


Install the anchors. Seal the wall around the anchors with waterproof bathroom sealant.

Install the top mounting screw so that the distance between the wall and the head of the screw is $3/8$ ".

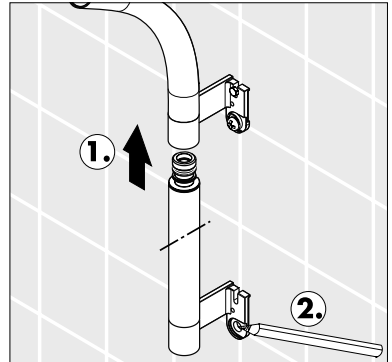


Install the upper wall support. Install the lower mounting screw. Tighten both screws with a 7 mm wrench.

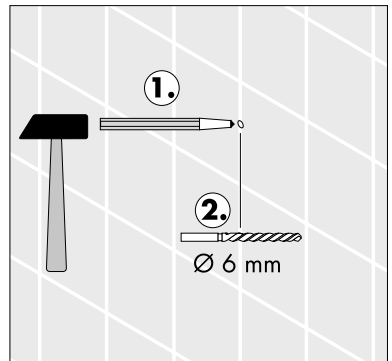


Temporarily install the bar and lower wall support (1). Mark the positions of the screw holes (2).

Put the bar and lower wall support away in a safe place.

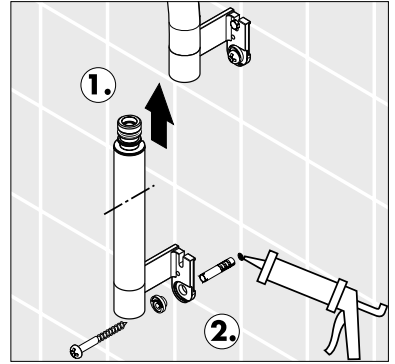


Dimple the tile (1). Drill the hole with a 6 mm bit suitable for the wall surface (2).



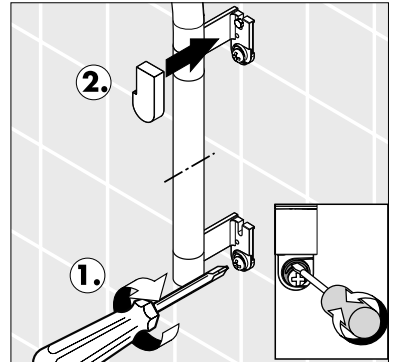
Install the anchor. Seal the wall around the anchor with waterproof bathroom sealant.

Install the bar and lower wall support (1). Install the screw and offset bushing (2).

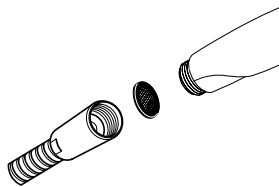


Confirm that the bar is level. If necessary, use a screwdriver to reposition the offset bushing (1).

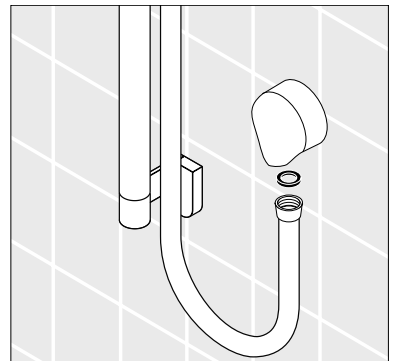
Install the screw covers (2)



Place a screen washer in one end of the hose. Screw this end to the handshower.

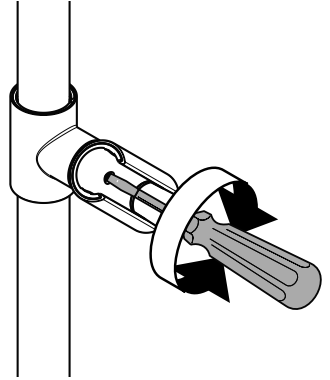
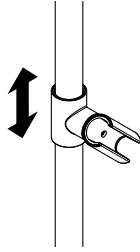


Place a rubber washer in the other end of the hose. Connect this end of the hose to the water supply (not included).



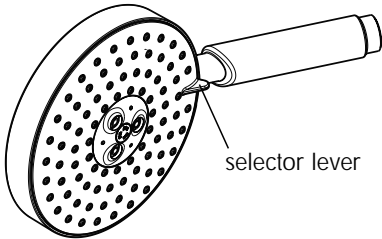
Slider Adjustment

To control how easy or how difficult it is to move the slider up and down the bar, use a screwdriver to turn the adjustment screw.



Turn the screw clockwise to make the slider harder to move, counter-clockwise to make it easier to move.

User Instructions



Push the selector lever to select the desired spray mode.



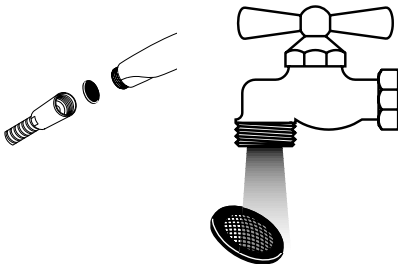
Rain AIR



Balance AIR



Whirl AIR



If the volume of water diminishes over time, remove and clean the screen washer.

Scale Removal

If limescale deposits are noticed in the spray channels, turn the water on lightly and rub across the spray channels with a finger or a sponge to dislodge them.

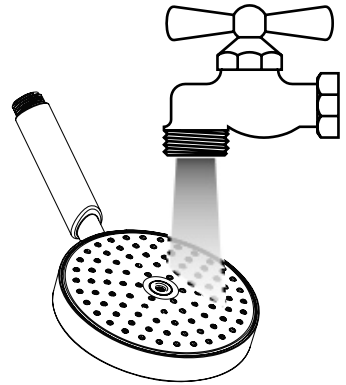


If scale deposits are noticed on the spray face, pour about 3/4" of a commercial limescale remover such as LimeAway or CLR into a shallow dish, diluted according to the label instructions.

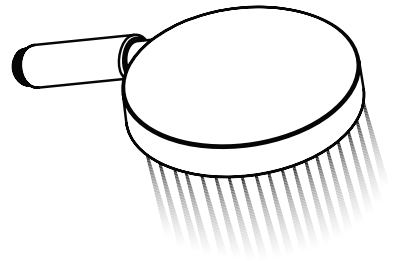


Soak just the spray face for the amount of time noted in the product instructions.

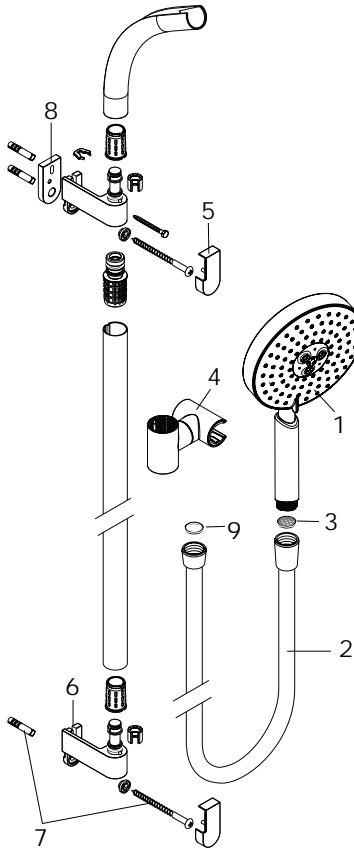
Rinse the handshower thoroughly with clear water.



Reinstall the handshower. Turn on the water and allow it to flush for at least 1 minute.



Replacement Parts



- | | | |
|---|--------------------|----------|
| 1 | handshower | 28519XX1 |
| 2 | hose | 28276XX0 |
| 3 | screen washer | 94246000 |
| 4 | slider | 97336XX0 |
| 5 | screw cover | 97337XX0 |
| 6 | wall support | 97375XX0 |
| 7 | mounting set | 96179000 |
| 8 | tile matching disk | 28699XX0 |
| 9 | hose washer | 98058000 |

XX = color
00 = chrome
82 = brushed nickel

Cleaning Recommendation for Hansgrohe Products

Modern sanitary faucetry and shower fixtures consist of very different materials to comply with the needs of the market with regard to design and functionality.

To avoid damage and returns, it is necessary to consider certain points when cleaning:

Cleaning materials for faucets and shower products:

Acids are necessary ingredients of cleaning materials for removing lime. However, please pay attention to the following points when cleaning faucets and shower products:

- Use only cleaning materials intended for the application.
- Never use cleaning materials which contain hydrochloric, formic, or phosphoric, or acetic acid, as these can cause considerable damage.
- Do not mix one cleaning material with another.
- Do not use abrasives, such as cleaning powders, sponge pads, or microfiber cloths.

Cleaning Instructions for Faucets and Shower Products:

Please follow the cleaning material manufacturer's instructions. In addition, please note the following:

- Clean your faucets and shower products as and when required.
- Follow the label instructions. Do not allow any cleaner to remain on the product for longer than necessary.
- Regular cleaning will prevent scale buildup and water spotting.
- When using spray cleaners, spray first onto a sponge or cloth. Do not spray directly onto the faucet or shower product as drops could enter openings or gaps and cause damage.
- After cleaning, rinse thoroughly with clear water to remove any cleaner residue.

Important

Residues of liquid soaps, shampoos, and shower foams can also cause damage, so rinse with clean water after using.

Please note:

- If the surface is already damaged, the effect of cleaning materials will cause further damage.
- Components with damaged surfaces must be replaced, otherwise, this could cause injury.
- Damage caused by improper treatment will not be covered by our warranty.

Limited Lifetime Consumer Warranty

This product has been manufactured and tested to the highest quality standards by Hansgrohe, Inc. ("Hansgrohe"). This warranty is limited to Hansgrohe products which are purchased by a consumer in the United States after March 1, 1996, and installed in either the United States or Canada.

WHO IS COVERED BY THE WARRANTY

This warranty extends to the original consumer purchaser only.

WHAT IS COVERED BY THE WARRANTY

This warranty covers only your Hansgrohe manufactured product. Hansgrohe warrants this product against defects in material or workmanship as follows: Hansgrohe will repair at no charge for parts only or, at its option, replace any product or part of the product which proves defective because of improper workmanship and/or material, under normal installation, use, service and maintenance. If Hansgrohe is unable to provide a replacement and repair is not practical or cannot be timely made, Hansgrohe may elect to refund the purchase price in exchange for the return of the product.

LENGTH OF WARRANTY

Replacement or repaired parts of products will be covered for the term of this warranty as stated in the following two sentences. If you are a consumer who purchased the product for use primarily for personal, family, or household purposes, this warranty extends for as long as you own the product and the home in which the product is installed. If you purchased the product for use primarily for any other purpose, including, without limitation, a commercial purpose, this warranty extends only (i) for 1 year, with respect to Interaktiv and Retroaktiv products, and (ii) for 5 years,

with respect to AXOR, ShowerPower and Pharo products.

THIS WARRANTY DOES NOT COVER, AND HANSGROHE WILL NOT PAY FOR:

- A. Conditions, malfunctions or damage not resulting from defects in material or workmanship.
- B. Conditions, malfunctions or damage resulting from (1) improper installation, improper maintenance, misuse, abuse, negligence, accident or alteration, or (2) the use of abrasive or caustic cleaning agents or "no rinse" cleaning products, or the use of the product in any manner contrary to the product instructions.
- C. Labor or other expenses for the disconnection or return of the product for warranty service, or for installation or reinstallation of the product.
- D. Accessories or related products not manufactured by Hansgrohe.

TO OBTAIN WARRANTY SERVICE

Contact your Hansgrohe retailer, or write to Technical Service at:

Hansgrohe Inc.
1492 Bluegrass Lakes Parkway
Alpharetta GA 30004

Or, call Hansgrohe toll-free at (800) 334-0455.

In requesting warranty service, you will need to provide

- 1. The sales receipt or other evidence of the date and place of purchase.
- 2. A description of the problem.
- 3. Delivery of the product or the defective part, postage prepaid and carefully packed and insured, to Hansgrohe Inc. 1492 Bluegrass Lakes Parkway, Alpharetta, Georgia 30004, Attention: Technical Service, if required by Hansgrohe.

When warranty service is completed, any repaired or replacement product or part will be returned to you postage prepaid.

EXCLUSIONS AND LIMITATIONS

REPAIR OR REPLACEMENT (OR, IN LIMITED CIRCUMSTANCES, REFUND OF THE PURCHASE PRICE) AS PROVIDED UNDER THIS WARRANTY IS THE EXCLUSIVE REMEDY OF THE PURCHASER. HANSGROHE NEITHER ASSUMES NOR AUTHORIZES ANY PERSON TO CREATE FOR IT ANY OBLIGATION OR LIABILITY IN CONNECTION WITH THIS PRODUCT.

HANSGROHE SHALL NOT BE LIABLE TO PURCHASER OR ANY PERSON FOR ANY INCIDENTAL, SPECIAL, OR CONSEQUENTIAL DAMAGES, ARISING OUT OF BREACH OF THIS WARRANTY OR ANY IMPLIED WARRANTY (INCLUDING MERCHANTABILITY).

Some States do not allow the exclusion or limitation of incidental or consequential damages, so the above limitation or exclusion may not apply to you.

This warranty gives you specific legal rights, and you may have other rights which vary from State to State.

You may be required by law to give us a reasonable opportunity to correct or cure any failure to comply before you can bring any action in court against us under the Magnuson-Moss Warranty Act.

PRODUCT INSTRUCTIONS AND QUESTIONS

Upon purchase or prior to installation, please carefully inspect your Hansgrohe product for any damage or visible defect. Prior to installing, always carefully study the enclosed instructions on the proper installation and the care and maintenance of the product. If you have questions at any time about the use, installation, or performance of your Hansgrohe product, or this warranty, please call or write to us at the toll-free number and address printed above.

hansgrohe

Hansgrohe, Inc. • 1490 Bluegrass Lakes Parkway • Alpharetta, GA 30004
Tel. 770 360-9880 • Fax 770 360 9887

www.hansgrohe-USA.com