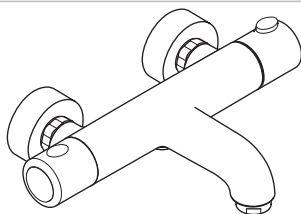
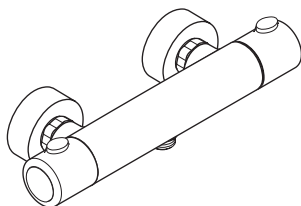


# Installation Instructions / Warranty



**Ecostat 1001 SL**  
13241XX1



**Ecostat 1001 SL**  
13261XX1

**hansgrohe**



**Ihr Online-Fachhändler für:**

**hansgrohe**

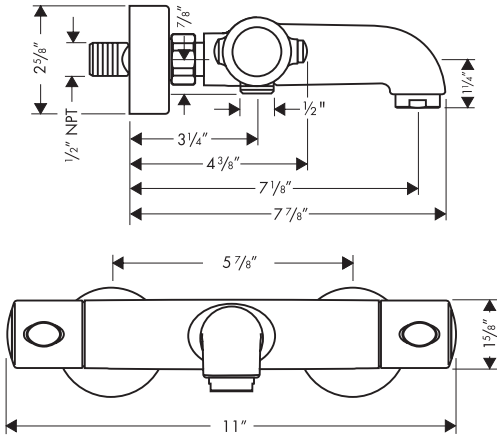
- Kostenlose und individuelle Beratung
- Hochwertige Produkte
- Kostenloser und schneller Versand

- TOP Bewertungen
- Exzelerter Kundenservice
- Über 20 Jahre Erfahrung

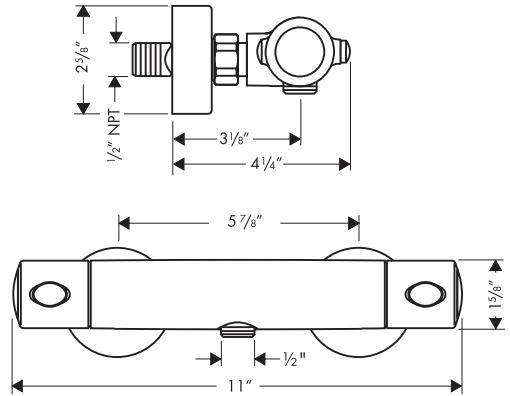


**E-Mail: [info@unidomo.de](mailto:info@unidomo.de) | Tel.: 04621 - 30 60 89 0 | [www.unidomo.de](http://www.unidomo.de)**

## 13241XX1



## 13261XX1



## Technical Data

Operating pressure:	max. 145 psi
Recommended operating pressure:	14.5 - 72 psi
Hot water temperature:	120° F - 140° F*
Rate of flow at 45 psi	5.3 gpm

Protection against back siphonage provided by check valves in the hot and cold inlets and on the handshower outlet.

\*Please know and follow all applicable local plumbing codes when setting the temperature on the water heater.

## Installation considerations

- Large differences in pressure between the hot and cold water supplies should be balanced
- Flush the supplies thoroughly of building debris before installing this unit.
- The offset adapters included with this unit require 1/2" female fittings, recessed 3/16" behind the surface of the finished wall.
- The high temperature limit stop may be reset to comply with local plumbing codes.
- To prevent scald injury, the maximum output temperature of the shower valve must be no higher than 120° F. In Massachusetts, the maximum output temperature can be no higher than 112° F.
- For use in Canada and the USA the mounted handshower must be equipped with a non return valve complying with ASME A112.18.3-2002
- Keep this booklet and the receipt (or other proof of date and place of purchase) for this product in a safe place. The receipt is required should it be necessary to request warranty parts.

## Rough in

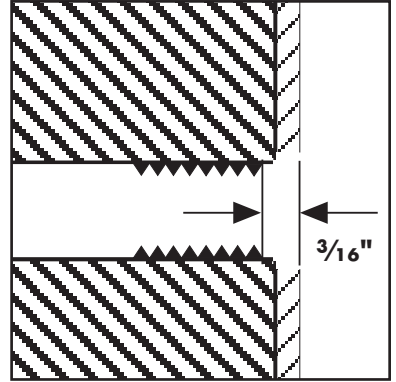
Install  $\frac{1}{2}$ " NPT female fittings, recessed  $\frac{3}{16}$ " behind the surface of the finished wall, for the hot and cold water supplies.

The fittings should be  $5\frac{7}{8}$ " apart on center.



**For proper operation of the thermostatic mixer, the hot supply must be on the left and the cold supply must be on the right.**

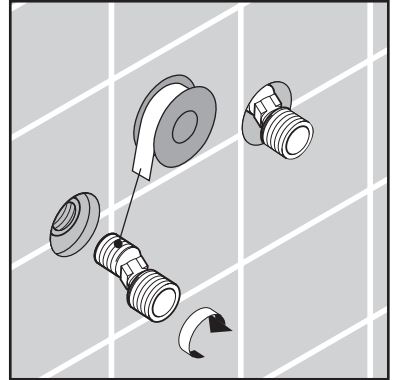
Install the finished wall. Make sure that the wall is watertight.



## Installation

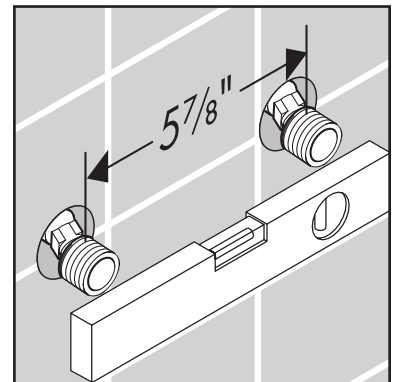
Wrap the inlet threads on the offset adapters with Teflon thread tape.

Screw the offset adapters into the female fittings.



The outlets of the offset adapters should be  $5\frac{7}{8}$ " apart on center.

Make sure that the adapters are level.



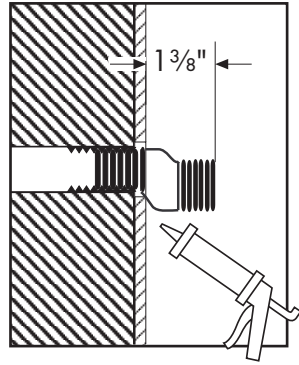
They should extend 1 3/8" outside the surface of the finished wall.



**Seal the wall around the offset adapters with waterproof sealant.**



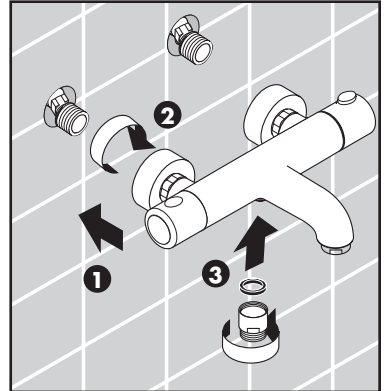
**Failure to seal the wall can lead to water damage.**



Position the valve over the offset adapters (1).

Secure the valve to the adapters by rotating the nuts clockwise (2).

Install the handshower check valve and washer (3).



Install the handshower and hose (not included).

Reset the high temperature limit stop, if desired.

Justify the thermostatic mixer handle.

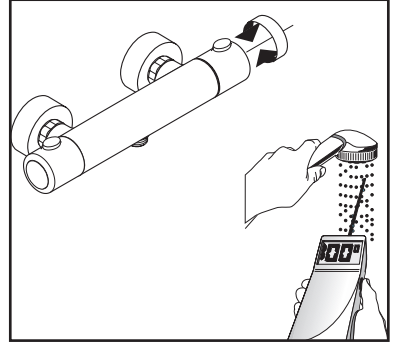
**13261XX1 only:** Reset the Ecostop, if desired, to limit the flow of water to the handshower to 2.6 gpm.

# Justify the Thermostatic Mixer Handle

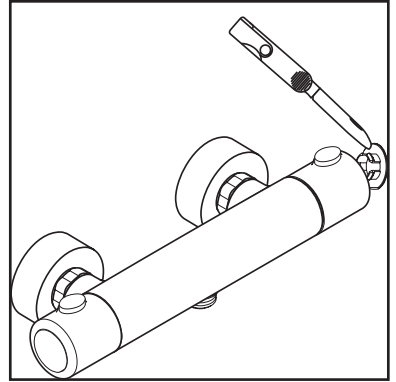
Turn the water on.

Turn the thermostatic mixer handle until the output water is 100°F.

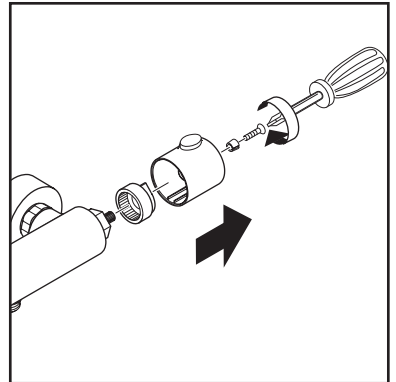
Turn the water off.



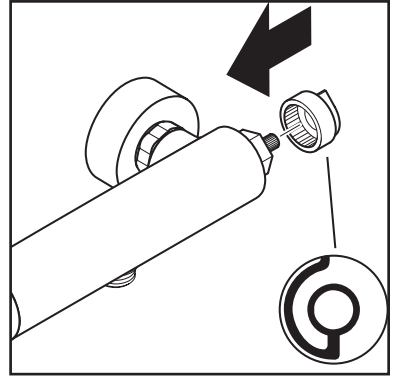
Remove the screw cover.



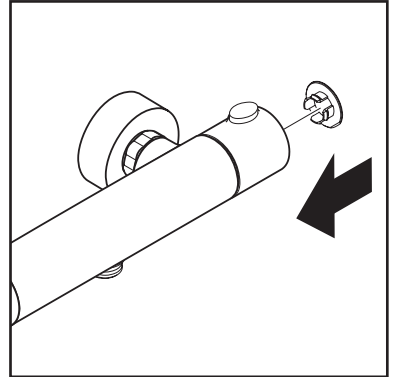
Remove the handle and safety set.



Reinstall the safety set so that it is oriented as shown in the diagram.



Reinstall the handle with the override button at the 12:00 position.

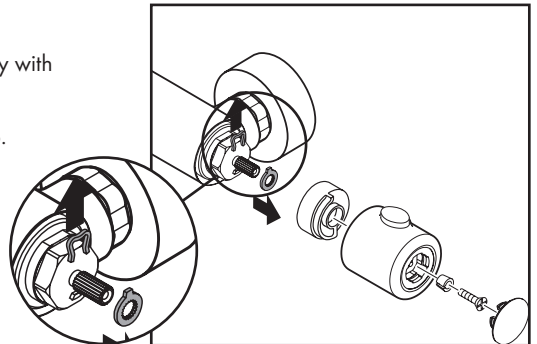


### Reset the High Temperature Limit Stop

The high temperature limit stop may be reset to comply with local plumbing codes.

Remove the thermostatic mixer handle and safety step.

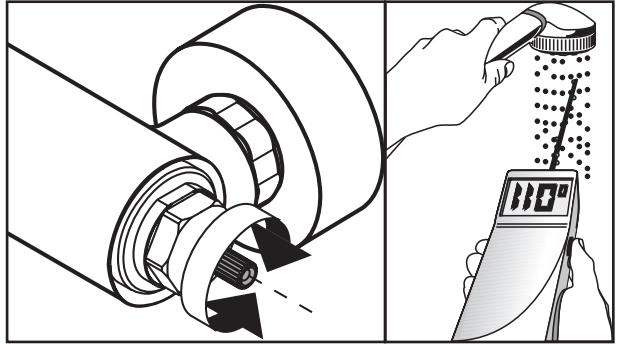
Remove the high temperature limit stop clip and ring.



Turn the water on.

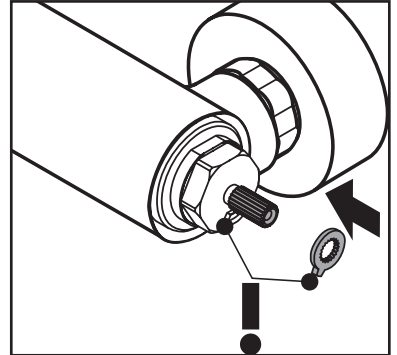
Turn the thermostatic mixer stem until the output water is the desired high temperature (usually 110°F).

Turn the water off.



Replace the high temperature limit stop ring so that the tooth is against the stop. Replace the clip.

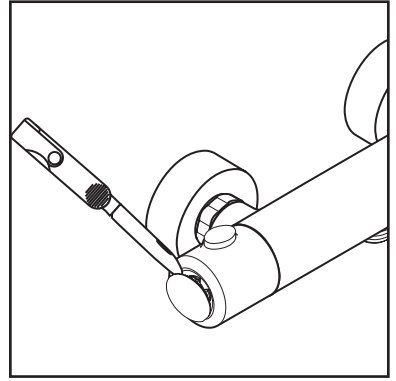
Justify and install the handle.



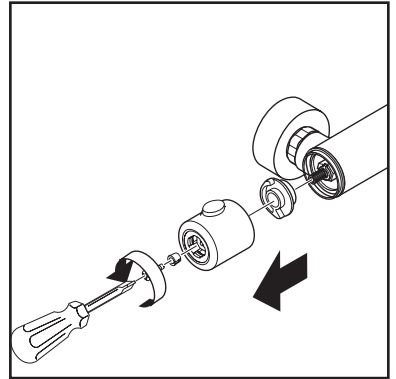


## Set the EcoStop (model 13261XX1 only)

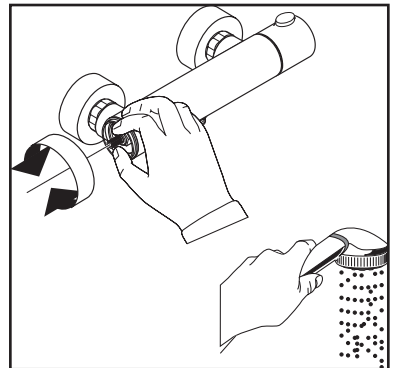
Remove the screw cover.



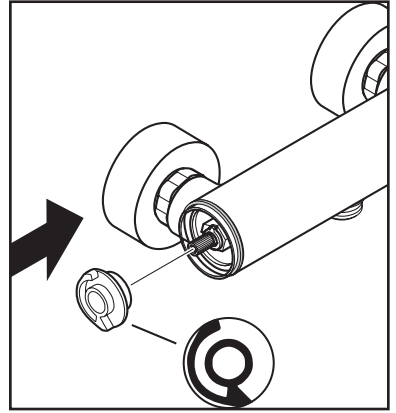
Remove the volume control / diverter handle and the flow control stop.



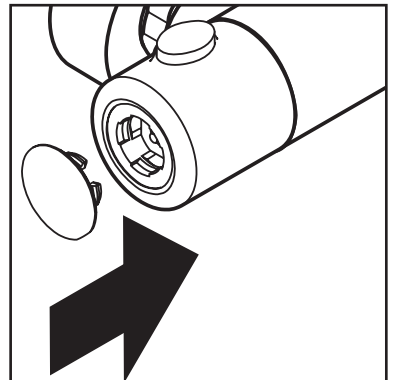
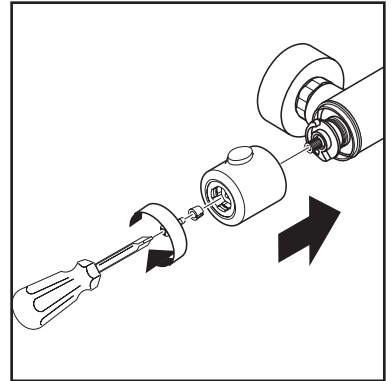
Turn the volume control stem until the flow rate is approximately 2.6 gpm.



Install the ecostop ring so that it is oriented as shown in the diagram.



Reinstall the handle and screw cover.



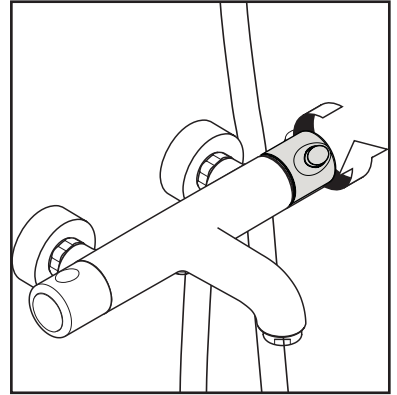
## User Instructions

Using the thermostatic mixer:

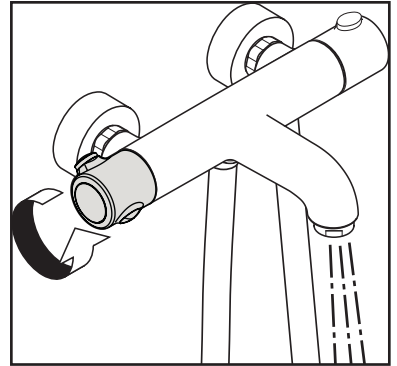
Turn the handle to change the temperature of the water, clockwise to make the water cooler, counter-clockwise to make the water warmer.

While making the water warmer, the handle will stop when the output water is 100°F.

To obtain water warmer than 100°F, press the safety stop override button and continue turning the handle counter-clockwise.



**13241XX1:** Turn the volume control / diverter handle to turn the water on and off from the tub spout.



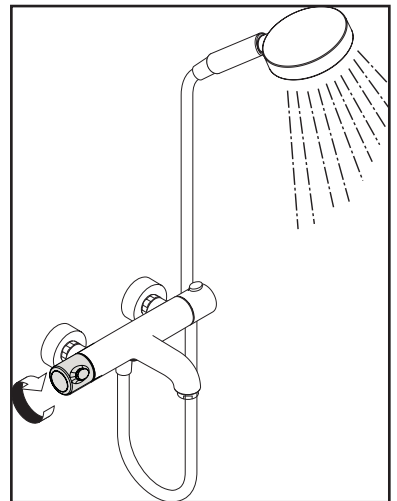
To select the handshower, press and hold the diverter button while turning the handle.

**13261XX1:** The volume control handle turns the water on and off and controls the volume.

The handle will stop when the amount of water coming from the valve is 2.6 gpm.

If more water is desired, press the green button and continue turning the handle.

**Note to US users:** by law, all handshowers sold in the US are flow restricted to 2.5 gpm.



# Troubleshooting

## Problem

Insufficient water

Crossflow, hot water is forced into cold water pipe, or vice versa, when mixer is closed

Spout temperature does not correspond with the temperature set

Temperature does not regulate

Shower or spout dripping

Instantaneous water heater doesn't work with thermostat

Unit outputs both hot and cold water, but not mixed water.

## Possible Cause

- Supply pressure inadequate
- Filters are dirty

- Screen washer dirty

- Check valves dirty or worn

- Thermostat handle has not been justified

- thermo cartridge calcified

- shut-off unit dirty or worn

- Ecostop ring isn't removed
- Filters are dirty
- Check valves dirty or worn

- Unit is cross-piped

## Solution

- Check water pressure
- Clean filters in front of the mixer and on the thermostat cartridge

- Clean screen washer between shower and hose

- Clean check valves, exchange if necessary

- Justify the handle

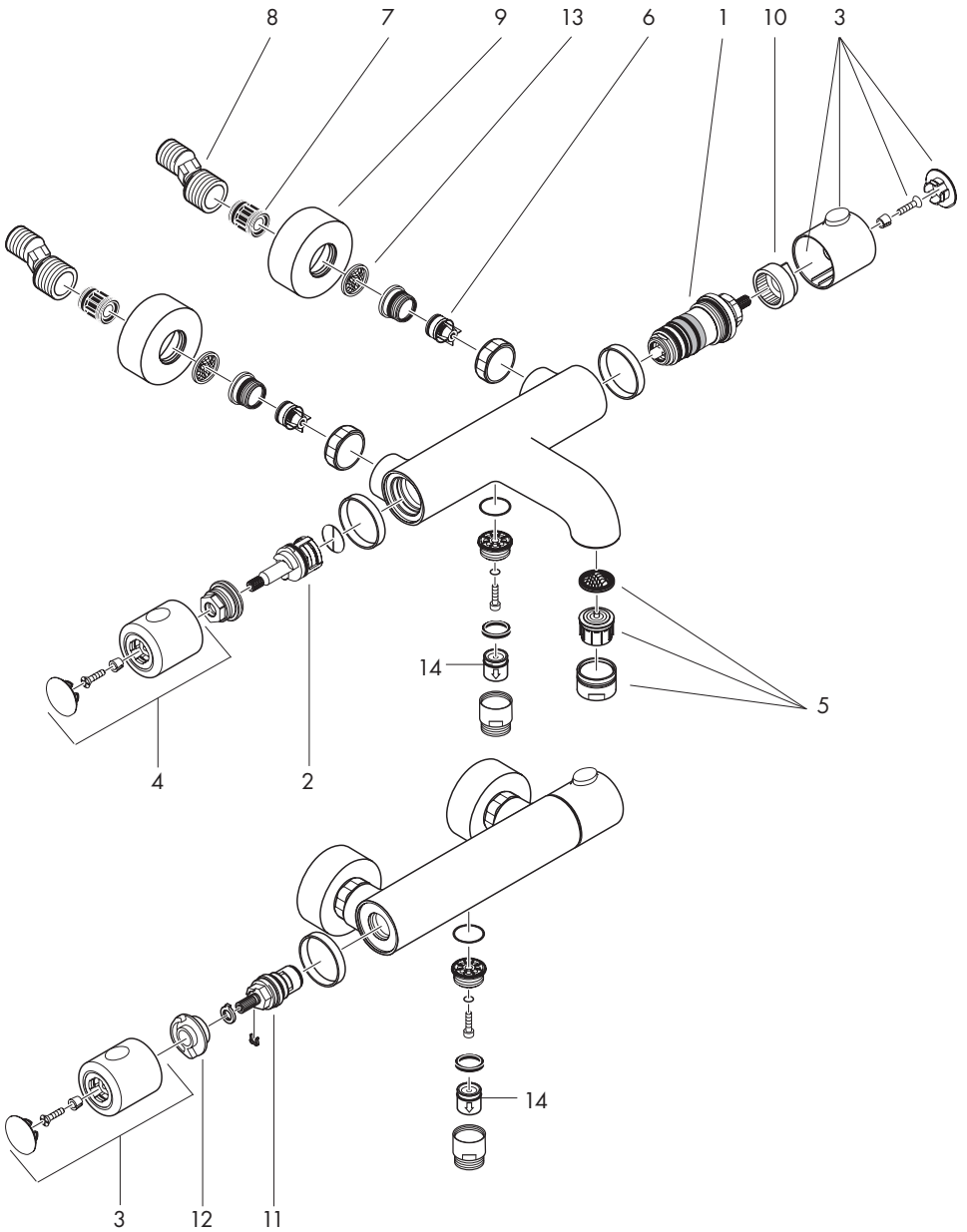
- Exchange thermo cartridge

- Clean or exchange shut-off unit

- Remove ecostop ring
- Clean the filter/exchange filters
- Exchange check valves

- Re-pipe. Make sure that the hot supply is on the left and the cold supply is on the right. No reversing cartridge is available.

# Replacement Parts



1	thermoelement	94282000
2	shut off and diverter unit	96509000
3	thermostatic handle	96618XX0
4	handle	96619XX1
5	aerator cpl.	13485000
6	check valve	96737000
7	noise reduction	96429000
8	offset adapters	94140001
9	escutcheon	96467XX1
10	safety set	95041000
11	shut off unit	94149000
12	ecostop ring	95042000
13	filter packing	96922000
14	check valve	94074000

XX = Colors

00	chrome
80	steel
81	satinox
82	brushed nickel

# Cleaning Recommendation for Hansgrohe Products

Modern lavatory faucets, kitchen faucets, and showers consist of very different materials to comply with the needs of the market with regard to design and functionality. To avoid damage and returns, it is necessary to consider certain criteria when cleaning.

## Cleaning Materials for Faucets and Showers

Acids are a necessary ingredient of cleaning materials for removing lime, however please pay attention to the following points when cleaning faucets and showers:

- Only use cleaning materials which are explicitly intended for this type of application.
- Never use cleaning materials which contain hydrochloric, formic, phosphoric, or acetic acid, as they cause considerable damage.
- Never mix one cleaning material with another.
- Never use cleaning materials or appliances with an abrasive effect, such as unsuitable cleaning powders, sponge pads, or micro fiber cloths.

## Cleaning Instructions for Faucets and Showers

Please follow the cleaning material manufacturer's instructions. In addition, pay attention to the following points:

- Clean the faucets and showers as and when required
- Use the amount of cleaning product and the amount of time recommended by the manufacturer. Do not leave the cleaner on the fixture longer than necessary.
- Regular cleaning can prevent calcification.
- When using spray cleaners, spray first onto a soft cloth or sponge. Never spray directly onto the faucet as droplets can enter openings and gaps and cause damage.
- After cleaning, rinse thoroughly with clean water to remove any cleaner residue.

## Important

Residues of liquid soaps, shampoos, and shower foams can also cause damage, so rinse with clean water after using.

**Please note:** if the surface is already damaged, the effect of cleaning materials will cause further damage.

**Components with damaged surfaces must be replaced or injury could result.**

**Damage caused by improper treatment is not covered under the warranty.**

# Limited Lifetime Consumer Warranty

This product has been manufactured and tested to the highest quality standards by Hansgrohe, Inc. ("Hansgrohe"). This warranty is limited to Hansgrohe products which are purchased by a consumer in the United States after March 1, 1996, and installed in either the United States or Canada.

## WHO IS COVERED BY THE WARRANTY

This warranty extends to the original consumer purchaser only. This warranty is non-transferable.

## WHAT IS COVERED BY THE WARRANTY

This warranty covers only your Hansgrohe manufactured product. Hansgrohe warrants this product against defects in material or workmanship as follows: Hansgrohe will repair at no charge for parts only or, at its option, replace any product or part of the product that proves defective because of improper workmanship and/or material, under normal installation, use, service and maintenance. If Hansgrohe is unable to provide a replacement and repair is not practical or cannot be timely made, Hansgrohe may elect to refund the purchase price in exchange for the return of the product.

## LENGTH OF WARRANTY

Replacement or repaired parts of products will be covered for the term of this warranty as stated in the following two sentences. If you are a consumer who purchased the product for use primarily for personal, family, or household purposes, this warranty extends for as long as you own the product and the home in which the product is originally installed. If you purchased the product for use primarily for any other purpose, including, without limitation, a commercial purpose, this warranty extends only (i) for 1 year, with respect to Hansgrohe and Commercial products, and (ii) for 5 years, with respect to AXOR products.

## THIS WARRANTY DOES NOT COVER, AND HANSGROHE WILL NOT PAY FOR:

- A. Conditions, malfunctions or damage not resulting from defects in material or workmanship.
- B. Conditions, malfunctions or damage resulting from (1) normal wear and tear, improper installation, improper maintenance, misuse, abuse, negligence, accident or alteration, or (2) the use of abrasive or caustic cleaning agents or "no-rinse" cleaning products, or the use of the product in any manner contrary to the product instructions. (3) Conditions in the home such as excessive water pressure or corrosion.
- C. Labor or other expenses for the disconnection, deinstallation, or return of the product for warranty service, or for installation or reinstallation of the product (including but not limited to proper packaging and shipping costs), or for installation or reinstallation of the product.
- D. Accessories, connected materials and products, or related products not manufactured by Hansgrohe.

## TO OBTAIN WARRANTY PARTS OR INFORMATION

Contact your Hansgrohe retailer, or contact Technical Service at:

Hansgrohe Inc.  
1492 Bluegrass Lakes Parkway  
Alpharetta GA 30004  
Toll-free (800) 334-0455.

In requesting warranty service, you will need to provide

1. The sales receipt or other evidence of the date and place of purchase.
2. A description of the problem.
3. Delivery of the product or the defective part, postage prepaid and carefully packed and insured, to Hansgrohe Inc. 1492 Bluegrass Lakes Parkway, Alpharetta, Georgia 30004, Attention: Technical Service, if required by Hansgrohe.

When warranty service is completed, any repaired or replacement product or part will be returned to you postage prepaid.

## EXCLUSIONS AND LIMITATIONS

REPAIR OR REPLACEMENT (OR, IN LIMITED CIRCUMSTANCES, REFUND OF THE PURCHASE PRICE) AS PROVIDED UNDER THIS WARRANTY IS THE EXCLUSIVE REMEDY OF THE PURCHASER. HANSGROHE NEITHER ASSUMES NOR AUTHORIZES ANY PERSON TO CREATE FOR IT ANY OBLIGATION OR LIABILITY IN CONNECTION WITH THIS PRODUCT.

HANSGROHE SHALL NOT BE LIABLE TO PURCHASER OR ANY PERSON FOR ANY INCIDENTAL, SPECIAL, OR CONSEQUENTIAL DAMAGES, ARISING OUT OF BREACH OF THIS WARRANTY OR ANY IMPLIED WARRANTY (INCLUDING MERCHANTABILITY).



Some States do not allow the exclusion or limitation of incidental or consequential damages, so the above limitation or exclusion may not apply to you. This warranty gives you specific legal rights, and you may have other rights which vary from State to State. You may be required by law to give us a reasonable opportunity to correct or cure any failure to comply before you can bring any action in court against us under the Magnuson-Moss Warranty Act.

#### PRODUCT INSTRUCTIONS AND QUESTIONS

Upon purchase or prior to installation, please carefully inspect your Hansgrohe product for any damage or visible defect. Prior to installing, always carefully study the enclosed instructions on the proper installation and the care and maintenance of the product. If you have questions at any time about the use, installation, or performance of your Hansgrohe product, or this warranty, please call or write to us or call us toll-free at 800 334 0455.

**hansgrohe**

Hansgrohe, Inc. • 1490 Bluegrass Lakes Parkway • Alpharetta, GA 30004  
Tel. 770-360-9880 • Fax 770-360-9887

[www.hansgrohe-usa.com](http://www.hansgrohe-usa.com)