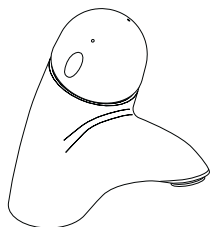
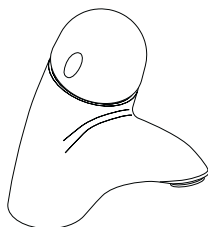


Installation Instructions / Warranty



Metering Lavatory Faucet
15090001



Metering Cold Water Lavatory Faucet
15097001

hansgrohe



Ihr Online-Fachhändler für:

hansgrohe

- Kostenlose und individuelle Beratung
- Hochwertige Produkte
- Kostenloser und schneller Versand

- TOP Bewertungen
- Exzelerter Kundenservice
- Über 20 Jahre Erfahrung



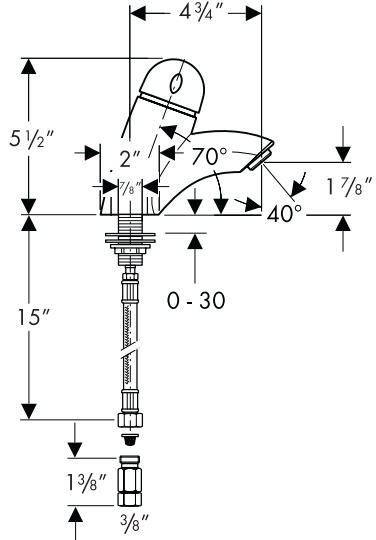
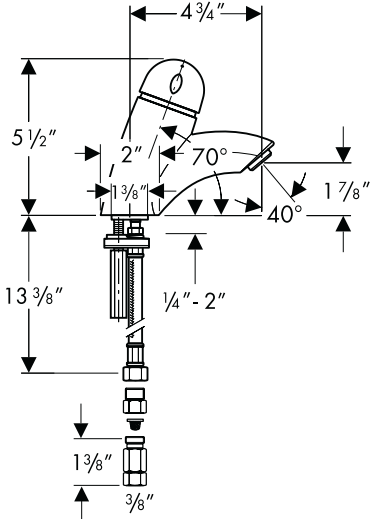
E-Mail: info@unidomo.de | Tel.: 04621 - 30 60 89 0 | www.unidomo.de

Metering Lavatory Faucet

15090001

Metering Cold Water Lavatory Faucet

15097001



Technical Data

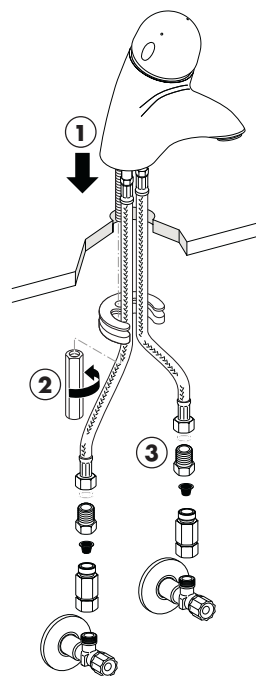
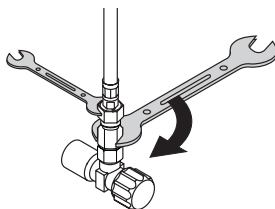
Maximum water pressure	145 psi
Recommended water pressure	14.5 – 72 psi
Recommended hot water temp	120oF – 140oF*
Maximum flow rate	1.6 gpm
15090001	
Hole size	1 1/2"
Max. mounting surface depth	2"
15097001	
Hole size	1"
Max mounting surface depth	1 1/8"

Installation Considerations

- This unit cannot be used with a continuous flow water heater.
- Large differences in pressure between the hot and cold water supplies should be balanced.
- This unit does not include a drain.
- Model 15090001 requires hot and cold water supplies. The maximum high temperature can be re-set to comply with local plumbing codes.
- Model 15097001 requires only a cold water supply.

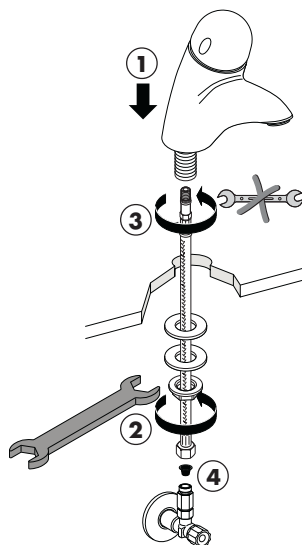
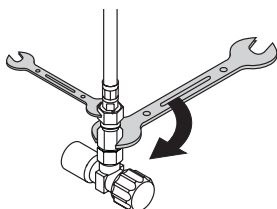
15090001 Installation

- From the top, feed the hot and cold hoses through the hole on the mounting surface. Sit the faucet on the mounting surface (1).
- From below, slide the mounting piece over the threaded rod. Screw the mounting nut onto the threaded rod (2).
- Install the adapters to the hot and cold stops. Attach the check valves and filter screens to the adapters. Attach the hoses to the check valves (3) using two wrenches, as shown. Take care not to twist or kink the supply hoses.



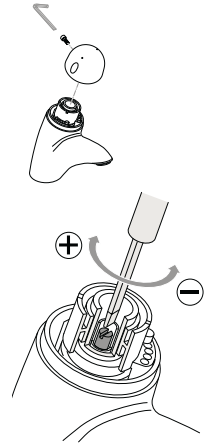
15097001 Installation

- Sit the faucet on the mounting surface (1).
- From below, install the washers and the mounting nut. Tighten the mounting nut firmly against the bottom of the mounting surface (2).
- Thread the supply hose into the faucet and tighten by hand (3). Do not use a wrench.
- Attach the adapter to the supply stop. Screw the supply hose to the adapter (4) using two wrenches, taking care not to twist the supply hose.



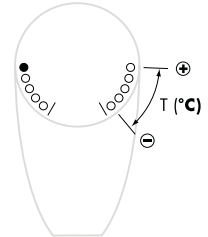
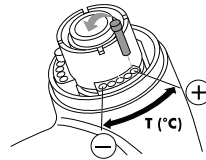
Set the timing

- Remove the set screw on the back of the handle with a 3 mm allen wrench. Remove the handle.
- Use a slot head screwdriver to turn the timing screw. Turn it clockwise to increase the time, counter-clockwise to decrease the time. The minimum time is 1 second, the maximum 39 seconds.



Set the maximum high temperature – 15090001 only

- Turn on the water and turn the handle to the right to obtain hot water. If it is too hot, re-set the maximum high temperature.
- Remove the set screw on the back of the handle with a 3 mm allen wrench. Remove the handle
- Remove the high temperature limit stop pin and move it forward.
- Reinstall the handle and test the faucet. Move the limit stop pin further forward if it is still too hot.

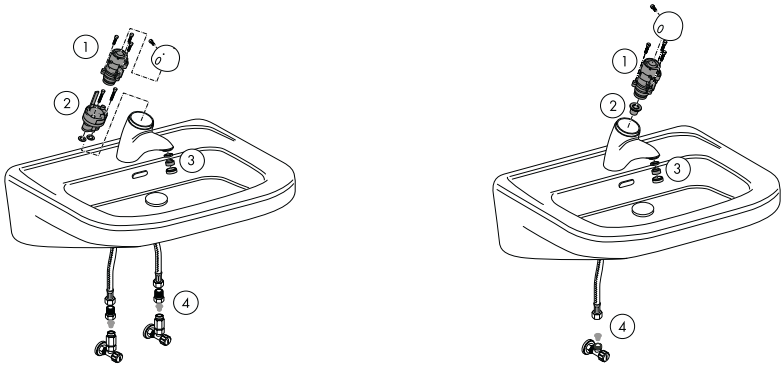


User Instructions

- Press the handle to turn the faucet on. It will automatically turn off.
- On the 15090000, turn the handle to the right to obtain hot water, to the left to obtain cold water.

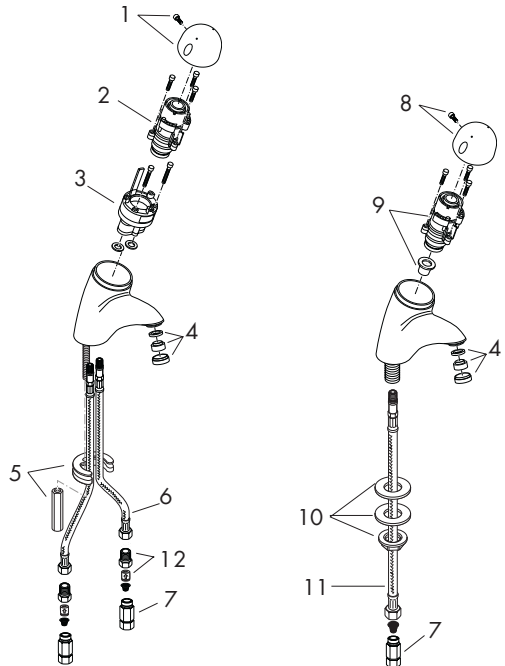
Troubleshooting

- If the faucet drips, will not turn on, or will not turn off, replace the cartridge (1,2).
- 15900001 only: If the temperature cannot be controlled by turning the handle, replace the cartridge (1,2).
- If the flow of water is insufficient, remove and clean the aerator (3). If this does not help, remove and clean the filter screens on the hot and cold water supplies (4).



Replacement Parts

1	handle	96663000
2	cartridge	96665000
3	cartridge	96661000
4	aerator	96788000
5	fixing kit	96016000
6	supply hose	96666001
7	adapter	
8	handle	96662000
9	cartridge	96664000
10	fixing kit	94702000
11	supply hose	96667001
12	check valve	



Cleaning Recommendation for Hansgrohe Products

Modern faucetry and shower products utilize a combination of materials to comply with the needs of the market with regard to design and functionality.

To avoid damage, it is necessary to use some caution when cleaning. Damage caused by improper treatment is not covered under the Hansgrohe warranty.

Cleaning Materials for Faucets and Showers

- To remove lime scale, use only products made specifically for that purpose. Always follow the manufacturer's instructions when using.
- Do not use cleaners that contain hydrochloric, formic, acetic, or phosphoric acids, as these will cause considerable damage to finishes and to plastic components.
- Never mix cleaning materials.
- Never use cleaners containing abrasives. Do not use abrasive cleaning cloths, pads, or sponges.

Cleaning Procedures

- Clean your faucets and shower products as and when required. Regular cleaning will prevent scale buildup and water spotting.
- Follow the label instructions. Do not allow any cleaner to remain on the product for longer than necessary.
- When using spray cleaners, spray first onto a sponge or cloth – do not spray directly onto the product.
- After cleaning, rinse thoroughly with clear water to remove any cleaner residue.

Important

- Soap and shampoo residue can also cause damage to the product. Rinse well with clean water after use.
- If the surface is already damaged, harsh cleaning materials will cause further damage.

Limited Lifetime Consumer Warranty

This product has been manufactured and tested to the highest quality standards by Hansgrohe, Inc. ("Hansgrohe"). This warranty is limited to Hansgrohe products which are purchased by a consumer in the United States after March 1, 1996, and installed in either the United States or Canada.

WHO IS COVERED BY THE WARRANTY

This warranty extends to the original consumer purchaser only.

WHAT IS COVERED BY THE WARRANTY

This warranty covers only your Hansgrohe manufactured product. Hansgrohe warrants this product against defects in material or workmanship as follows: Hansgrohe will repair at no charge for parts only or, at its option, replace any product or part of the product which proves defective because of improper workmanship and/or material, under normal installation, use, service and maintenance. If Hansgrohe is unable to provide a replacement and repair is not practical or cannot be timely made, Hansgrohe may elect to refund the purchase price in exchange for the return of the product.

LENGTH OF WARRANTY

Replacement or repaired parts of products will be covered for the term of this warranty as stated in the following two sentences. If you are a consumer who purchased the product for use primarily for personal, family, or household purposes, this warranty extends for as long as you own the product and the home in which the product is installed. If you purchased the product for use primarily for any other purpose, including, without limitation, a commercial purpose, this warranty extends only (i) for 1 year, with respect to Interaktiv and Retroaktiv products, and (ii) for 5 years, with respect to AXOR, ShowerPower and Pharo products.

THIS WARRANTY DOES NOT COVER, AND HANSGROHE WILL NOT PAY FOR:

- A. Conditions, malfunctions or damage not resulting from defects in material or workmanship.
- B. Conditions, malfunctions or damage resulting from (1) improper installation, improper maintenance, misuse, abuse, negligence, accident or alteration, or (2) the use of abrasive or caustic cleaning agents or "no rinse" cleaning products, or the use of the product in any manner contrary to the product instructions.
- C. Labor or other expenses for the disconnection or return of the product for warranty service, or for installation or reinstallation of the product.
- D. Accessories or related products not manufactured by Hansgrohe.

TO OBTAIN WARRANTY SERVICE

Contact your Hansgrohe retailer, or write to Technical Service at:

Hansgrohe Inc.
1492 Bluegrass Lakes Parkway
Alpharetta GA 30004

Or, call Hansgrohe toll-free at (800) 334-0455.

In requesting warranty service, you will need to provide

- 1. The sales receipt or other evidence of the date and place of purchase.
- 2. A description of the problem.
- 3. Delivery of the product or the defective part, postage prepaid and carefully packed and insured, to Hansgrohe Inc. 1492 Bluegrass Lakes Parkway, Alpharetta, Georgia 30004, Attention: Technical Service, if required by Hansgrohe.

When warranty service is completed, any repaired or replacement product or part will be returned to you postage prepaid.

EXCLUSIONS AND LIMITATIONS

REPAIR OR REPLACEMENT (OR, IN LIMITED CIRCUMSTANCES, REFUND OF THE PURCHASE PRICE) AS PROVIDED UNDER THIS WARRANTY IS THE EXCLUSIVE REMEDY OF THE PURCHASER. HANSGROHE NEITHER ASSUMES NOR AUTHORIZES ANY PERSON TO CREATE FOR IT ANY OBLIGATION OR LIABILITY IN CONNECTION WITH THIS PRODUCT.

HANSGROHE SHALL NOT BE LIABLE TO PURCHASER OR ANY PERSON FOR ANY INCIDENTAL, SPECIAL, OR CONSEQUENTIAL DAMAGES, ARISING OUT OF BREACH OF THIS WARRANTY OR ANY IMPLIED WARRANTY (INCLUDING MERCHANTABILITY).

Some States do not allow the exclusion or limitation of incidental or consequential damages, so the above limitation or exclusion may not apply to you.

This warranty gives you specific legal rights, and you may have other rights which vary from State to State.

You may be required by law to give us a reasonable opportunity to correct or cure any failure to comply before you can bring any action in court against us under the Magnuson-Moss Warranty Act.

PRODUCT INSTRUCTIONS AND QUESTIONS

Upon purchase or prior to installation, please carefully inspect your Hansgrohe product for any damage or visible defect. Prior to installing, always carefully study the enclosed instructions on the proper installation and the care and maintenance of the product. If you have questions at any time about the use, installation, or performance of your Hansgrohe product, or this warranty, please call or write to us at the toll-free number and address printed above.

hansgrohe

Hansgrohe, Inc. • 1490 Bluegrass Lakes Parkway • Alpharetta, GA 30004
Tel. 770 360-9880 • Fax 770 360 9887
www.hansgrohe-USA.com