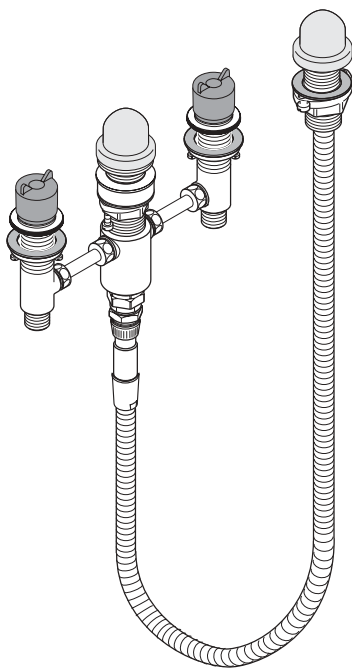


# Installation / Warranty

hangrohe



**Four-Hole Roman Tub Rough**  
06646000



**Ihr Online-Fachhändler für:**

**hansgrohe**

- Kostenlose und individuelle Beratung
- Hochwertige Produkte
- Kostenloser und schneller Versand

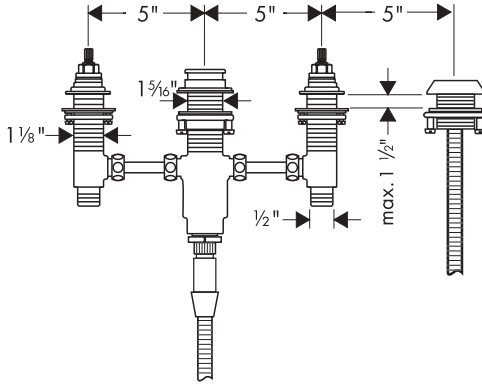
- TOP Bewertungen
- Exzelerter Kundenservice
- Über 20 Jahre Erfahrung



**E-Mail: [info@unidomo.de](mailto:info@unidomo.de) | Tel.: 04621 - 30 60 89 0 | [www.unidomo.de](http://www.unidomo.de)**

# Four-hole Roman Tub Rough

## 06646000



### Technical Specification

Recommended operating pressure	45 - 80 psi
Recommended hot water temperature	120° - 140° F*
Flow rate - valves	approx. 6 gpm each

#### Hole sizes

Valves	1 1/4"
Spout	1 3/8"
Spout Adapter Pin	3/16"
Handshower holder	1 1/2"
Maximum mounting surface thickness	1 1/2"

### Ceramic cartridge operation.

The copper tubing used to connect the valves to the spout tee is 1/4" (nominal) type "K". The installer may provide copper tubing if the desired installation is different from that specified here.

A backflow preventer is included with this unit.

### Installation Considerations

For best results, Hansgrohe recommends installation by a licensed professional plumber. Installation must be completed with a Hansgrohe Interaktiv 4-hole tub trim kit.

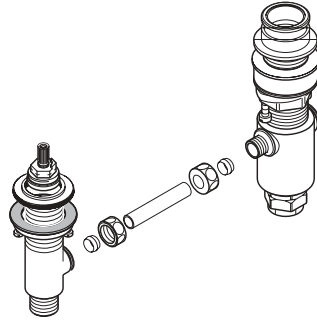
Hansgrohe does not provide supply lines or nuts.

The hot and cold supplies must be thoroughly flushed before installation of this rough valve. Damage to the valve cartridges caused by debris in the water lines is not covered under the Hansgrohe Limited Lifetime Warranty.

# Installation

## Install the connecting tubes

- Install a compression nut and ferrule to one end of the connection tube. Push the tube into the inlet of the spout tee. Tighten the compression nut.
- Install a compression nut and ferrule on the other end of the connection tube. Push the tube into the outlet port of the hot valve corner. (The hot valve corner is marked with red dye.) Tighten the compression nut.
- Repeat with the second connection tube and the cold valve corner.



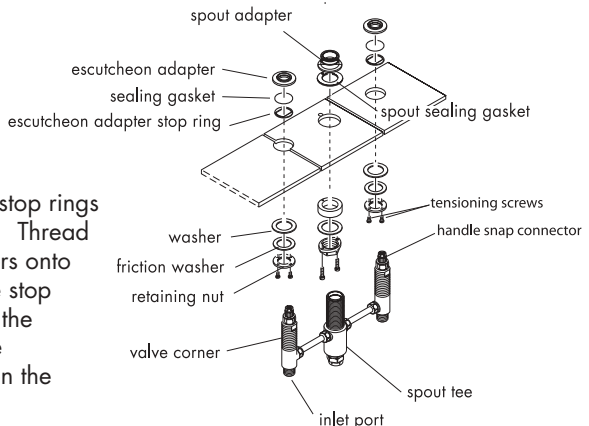
## Install the rough

Caution: Do not bend or kink the copper connection tubes.

- Remove the plaster shields, escutcheon adapters, o-rings, and stop rings from the valve corners and set them aside in a safe location. Remove the plaster shield, spout adapter, and spout adapter gasket from the spout tee.
- If necessary, reinstall the o-rings to the corresponding grooves on the escutcheon adapters.

- From below, insert the valve corners and spout tee through the corresponding holes in the mounting surface. The hot valve corner should be on the left, the cold on the right.

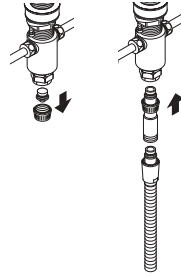
- From above, slide the stop rings onto the valve corners. Thread the escutcheon adapters onto the valve corners. The stop rings will stop them at the proper height. Rest the escutcheon adapters on the mounting surface.



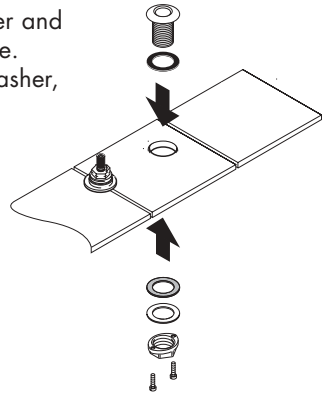
- Slide the spout adapter gasket over the spout tee, aligning the retaining pin hole in the gasket with the retaining pin hole in the surface. Thread the spout adapter onto the tee. When resting on the mounting surface, the retaining pin should go through the retaining pin hole in the gasket and mounting surface – adjust if necessary.
- From underneath the deck, tighten the mounting nuts firmly against the underside of the mounting surface. Tighten the tensioning screws.

## Install the handshower holder and hose

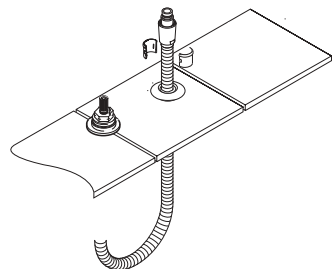
- Remove the plug from the bottom of the spout tee. Install the backflow preventer. Screw one end of the hose to the backflow preventer.



- From the top, place the handshower holder and rubber sealing ring in the handshower hole. From beneath the deck, install the fiber washer, metal washer, and mounting nut.

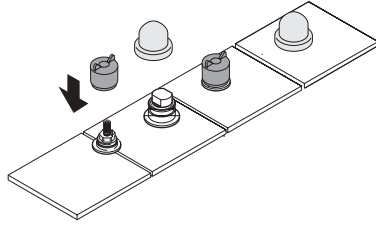


- Push the handshower hose up through the handshower holder. Place both halves of the retaining ring around the hose and snap together. Push the retaining ring into the handshower holder.

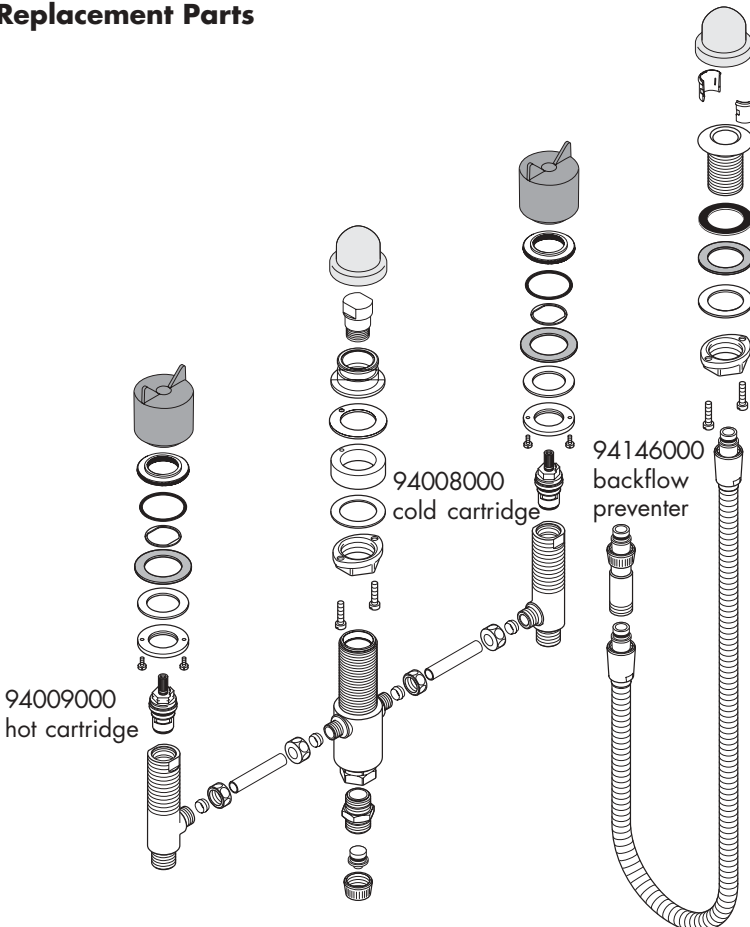


## Finish the installation

- Install the hot and cold supplies to the inlet ports of the valve corners. The hot should be on the left, the cold on the right.
- Make sure that the enclosed plug on the spout adapter is securely in place. Pressurize the system and check all connections for leaks.
- Cover the valve stems, spout adapter, and handshower holder with the enclosed plaster shields until ready to install the trim.



## Replacement Parts



# Cleaning Recommendation for Hansgrohe Products

Modern faucetry and shower products utilize a combination of materials to comply with the needs of the market with regard to design and functionality.

To avoid damage, it is necessary to use some caution when cleaning. Damage caused by improper treatment is not covered under the Hansgrohe warranty.

## Cleaning Materials for Faucets and Showers

- To remove lime scale, use only products made specifically for that purpose. Always follow the manufacturer's instructions when using.
- Do not use cleaners that contain hydrochloric, formic, acetic, or phosphoric acids, as these will cause considerable damage to finishes and to plastic components.
- Never mix cleaning materials.
- Never use cleaners containing abrasives. Do not use abrasive cleaning cloths, pads, or sponges.

## Cleaning Procedures

- Clean your faucets and shower products as and when required. Regular cleaning will prevent scale buildup and water spotting.
- Follow the label instructions. Do not allow any cleaner to remain on the product for longer than necessary.
- When using spray cleaners, spray first onto a sponge or cloth – do not spray directly onto the product.
- After cleaning, rinse thoroughly with clear water to remove any cleaner residue.

## Important

- Soap and shampoo residue can also cause damage to the product. Rinse well with clean water after use.
- If the surface is already damaged, harsh cleaning materials will cause further damage.

## Limited Lifetime Consumer Warranty

This product has been manufactured and tested to the highest quality standards by Hansgrohe, Inc. ("Hansgrohe"). This warranty is limited to Hansgrohe products which are purchased by a consumer in the United States after March 1, 1996, and installed in either the United States or Canada.

### WHO IS COVERED BY THE WARRANTY

This warranty extends to the original consumer purchaser only.

### WHAT IS COVERED BY THE WARRANTY

The warranty covers only your Hansgrohe manufactured product. Hansgrohe warrants this product against defects in material or workmanship as follows: Hansgrohe will repair at no charge for parts or labor or, at its option, replace any product or part of the product which proves defective because of improper workmanship and/or material, under normal installation, use, service and maintenance. If Hansgrohe is unable to provide a replacement and repair is not practical or cannot be timely made, Hansgrohe may elect to refund the purchase price in exchange for the return of the product.

### LENGTH OF THE WARRANTY

Replacement of repaired parts of products will be covered for the term of this warranty as stated in the following two sentences. If you are a consumer who purchased the product for use primarily for personal, family or household purposes, this warranty extends for as long as you own the product and the home in which the product is installed. If you purchased the product for use primarily for any other purpose, including, without limitation, a commercial purpose, this warranty extends only (i) for 1 year with respect to Interaktiv products, and (ii) for 5 years, with respect to Axor and Pharo products.

**THIS WARRANTY DOES NOT COVER, AND HANSGROHE WILL NOT PAY FOR:**

- A. Conditions, malfunctions or damage not resulting from defects in material or workmanship.
- B. Conditions, malfunctions, or damage resulting from (1) improper installation, improper maintenance, misuse, abuse, negligence, accident or alteration, or (2) the use of abrasive or caustic cleaning agents or “no rinse” cleaning products, or the use of the product in any manner contrary to the product instructions.
- C. Labor and other expenses for disconnection or return of the product for warranty service, or for installation or reinstallation of the product.
- D. Accessories or related products not manufactured by Hansgrohe.

**TO OBTAIN WARRANTY SERVICE**

Contact your Hansgrohe retailer, or write to Technical Service at:

Hansgrohe Inc.  
1492 Bluegrass Lakes Parkway  
Alpharetta GA 30004

Or call Hansgrohe toll-free at (800) 334 0455.

In requesting warranty service, you will need to provide:

- 1. The sales receipt or other evidence of the date and place of purchase.
- 2. A description of the problem.
- 3. Delivery of the product or the defective part, postage prepaid, and carefully packed and insured, to Hansgrohe Inc. 1492 Bluegrass Lakes Parkway, Alpharetta Georgia 30004, Attention: Technical Service, if required by Hansgrohe.

When warranty service is completed, any repaired or replacement product or part will be returned to you postage prepaid.

**EXCLUSIONS AND LIMITATIONS**

**REPAIR OR REPLACEMENT (OR, IN LIMITED CIRCUMSTANCES, REFUND OF THE PURCHASE PRICE) AS PROVIDED UNDER THIS WARRANTY IS THE EXCLUSIVE REMEDY OF THE PURCHASER. HANSGROHE NEITHER ASSUMES NOR AUTHORIZES ANY PERSON TO CREATE FOR IT ANY OTHER OBLIGATION OR LIABILITY IN CONNECTION WITH THIS PRODUCT.**

**HANSGROHE SHALL NOT BE LIABLE TO PURCHASER OR ANY OTHER PERSON FOR ANY INCIDENTAL, SPECIAL, OR CONSEQUENTIAL DAMAGES, ARISING OUT OF A BREACH OF THIS WARRANTY OR ANY IMPLIED WARRANTY (INCLUDING MERCHANTABILITY).**

Some States do not allow the exclusion or limitation of incidental or consequential damages, so the above limitation or exclusion may not apply to you.

This warranty gives you specific legal rights, and you may also have other rights which vary from state to state.

You may be required by law to give us a reasonable opportunity to correct or cure any failure to comply before you can bring any action in court against us under the Magnuson-Moss Warranty Act.

**PRODUCT INSTRUCTIONS AND QUESTIONS**

Upon purchase or prior to installation, please carefully inspect your Hansgrohe product for any damage or visible defect. Prior to installing, always carefully study the enclosed instructions on the proper installation and the care and maintenance of this product. If you have questions at any time about the use, installation or performance of your Hansgrohe product, or this warranty, please call or write to us at the toll-free number and address provided above.



**Hansgrohe Inc.**  
1490 Bluegrass Lakes Parkway  
Alpharetta GA 30004  
770 360 9880  
website: [www.hansgrohe-USA.com](http://www.hansgrohe-USA.com)