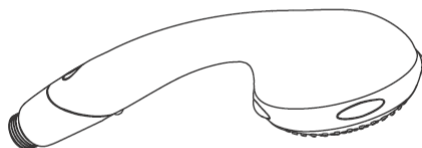


# Montageanleitung



**Aktiva A8**  
28547XXX

**hangrohe**



**Ihr Online-Fachhändler für:**

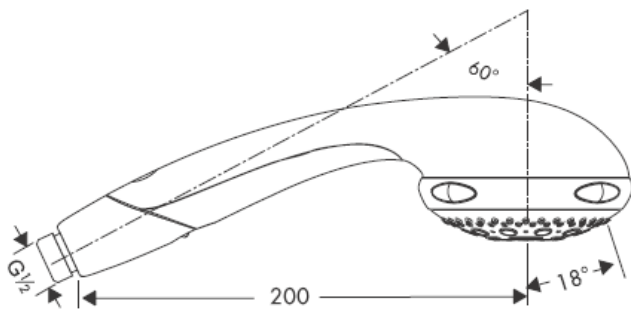
**hansgrohe**

- Kostenlose und individuelle Beratung
- Hochwertige Produkte
- Kostenloser und schneller Versand

- TOP Bewertungen
- Exzelerter Kundenservice
- Über 20 Jahre Erfahrung



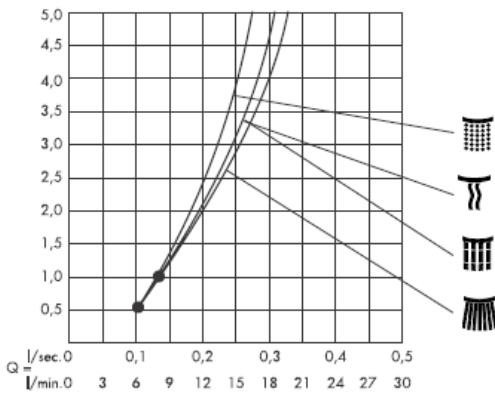
**E-Mail: [info@unidomo.de](mailto:info@unidomo.de) | Tel.: 04621 - 30 60 89 0 | [www.unidomo.de](http://www.unidomo.de)**



Normalstrahl



Softstrahl



Massagestrahl

Ab • ist die Funktion gewährleistet.



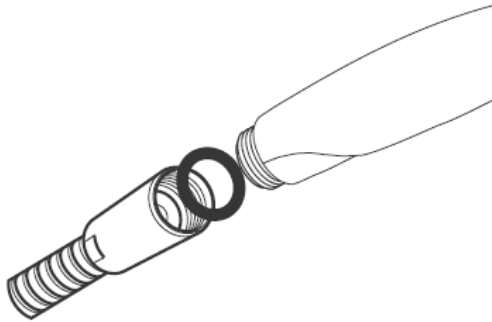
Monostrahl

### Technische Daten

Betriebsdruck: max. 0,6 MPa  
Empfohlener Betriebsdruck: 0,1 – 0,4 MPa  
Heißwassertemperatur: max. 60° C  
(1 MPa = 10 bar = 147 PSI)

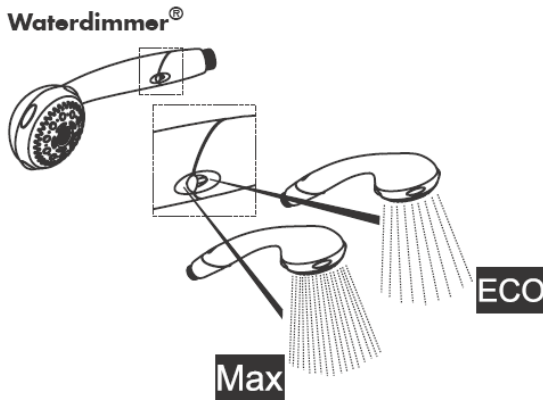
### Montage

---



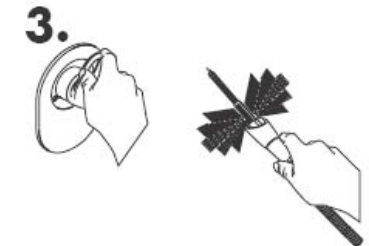
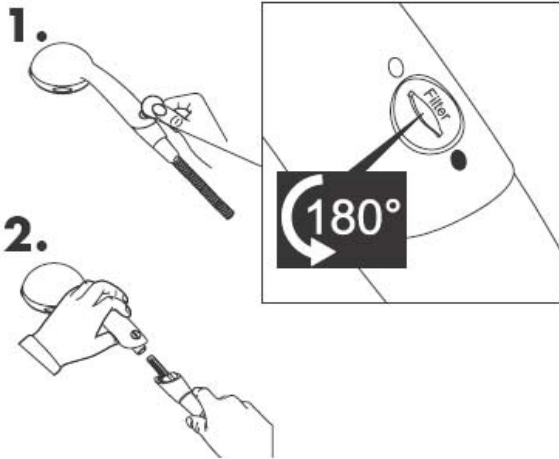
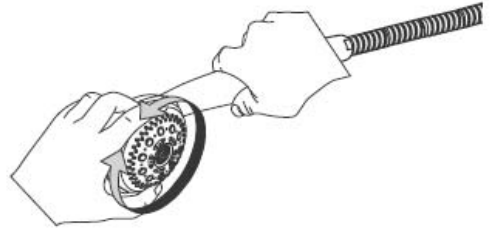
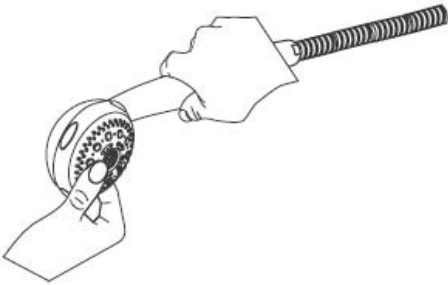
### Montage

---



Hansgrohe Handbrausen können in Verbindung mit hydraulisch und thermisch gesteuerten Durchlauferhitzern eingesetzt werden, ohne Benutzung der Waterdim® Funktion und bei einem Fließdruck von mindestens 0,15 MPa.

## Reinigung



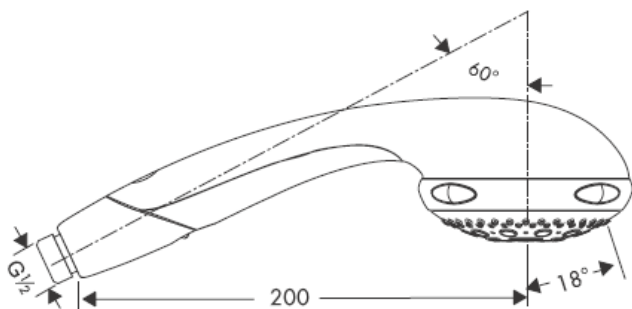
**hansgrohe**

# Instructions de montage



**Aktiva A8**  
28547XXX

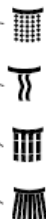
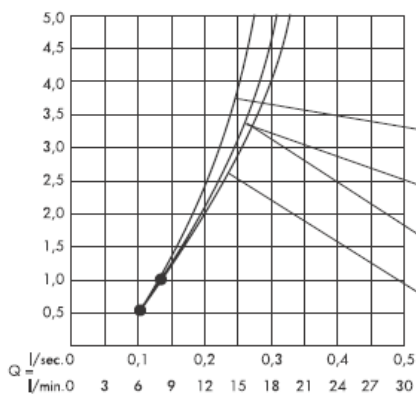
**hansgrohe**



Jet de pluie



Jet doux aéré



Jet de massage

A partir de • le fonctionnement est garanti.



Jet de mono

### Informations techniques

Pression de service autorisée: max. 0,6 MPa

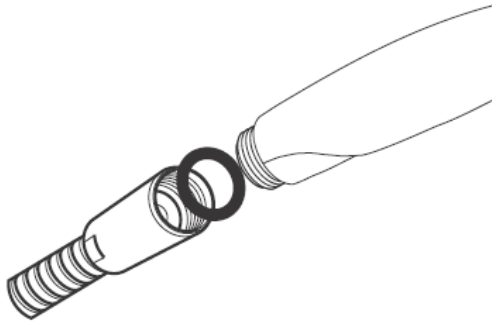
Pression de service conseillée: 0,1 – 0,4 MPa

Température max. d'eau chaude: max. 60° C

(1 MPa = 10 bar = 147 PSI)

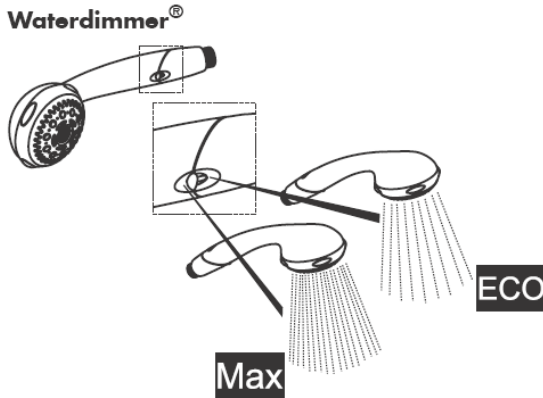
### Montage

---



### Montage

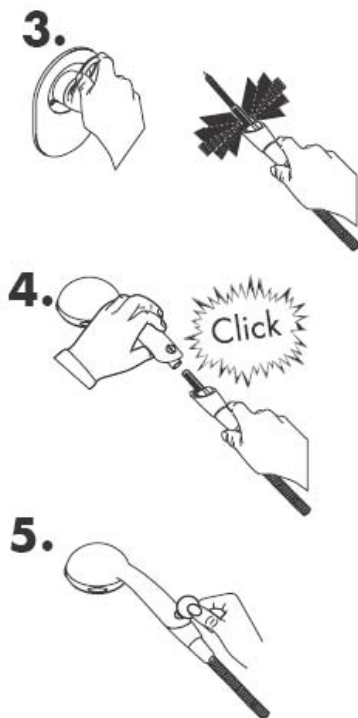
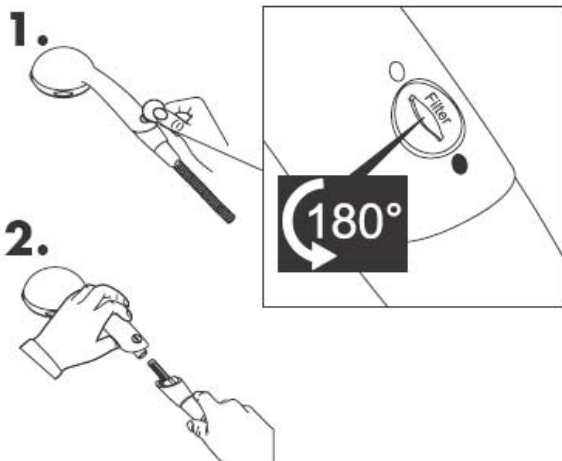
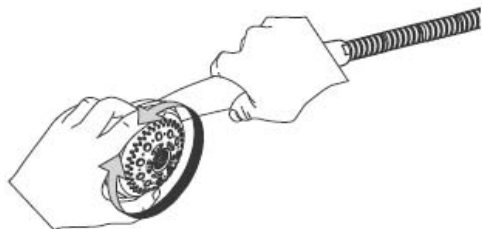
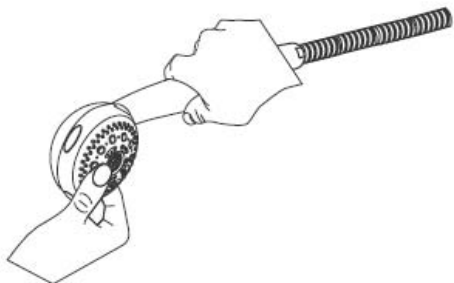
---



Les douchettes Hansgrohe fonctionnent avec les chauffe eaux instantanés à partir de 0,15 MPa de pression à condition de ne pas utiliser les dispositifs d'économie d'eau (Waterdimmer®).

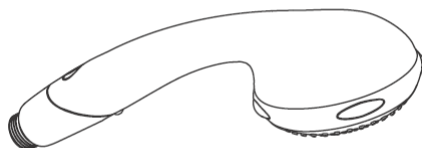


## Nettoyage



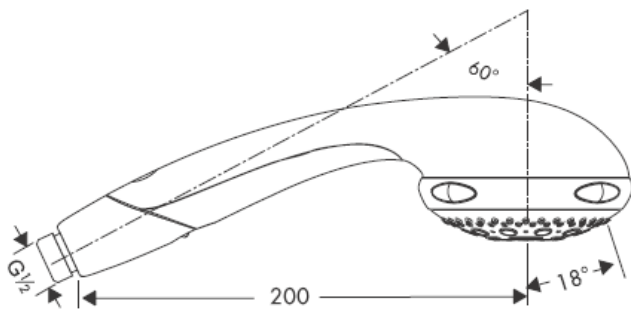
**hansgrohe**

# assembly instructions



**Aktiva A8**  
28547XXX

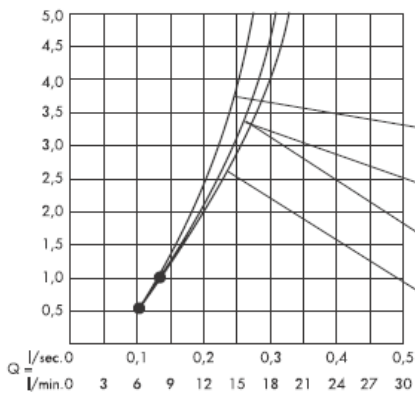
**hansgrohe**



Normal spray



Soft spray



Massage jet

From • the function is guaranteed.



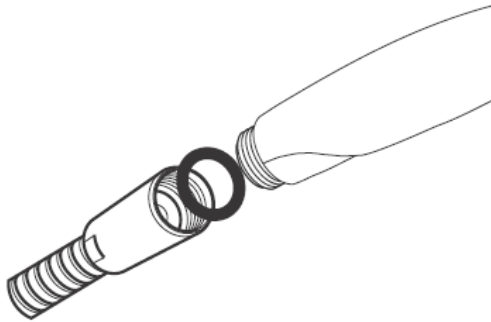
Mono spray

**Technical Data**

Operating pressure: max. 0,6 MPa  
Recommended operating pressure: 0,1 – 0,4 MPa  
Hot water temperature: max. 60° C  
(1 MPa = 10 bar = 147 PSI)

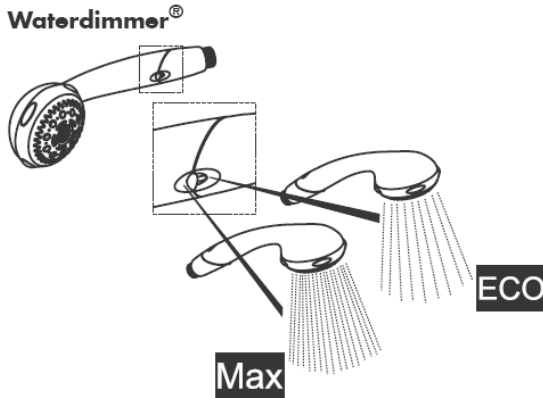
**Assembly**

---



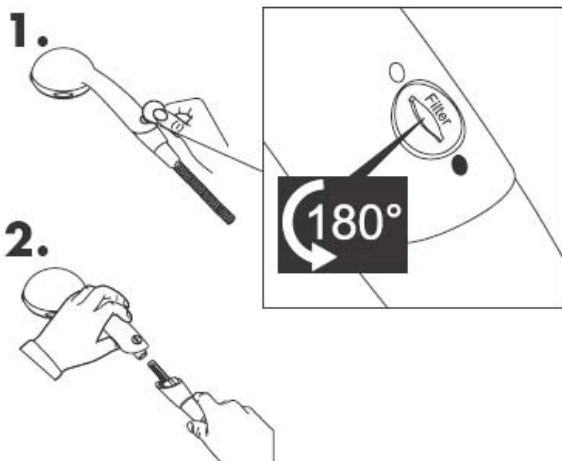
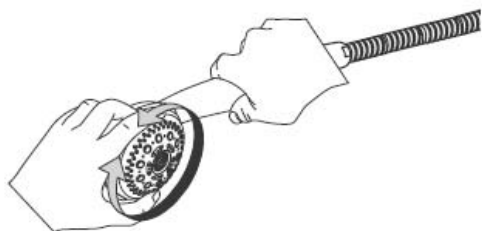
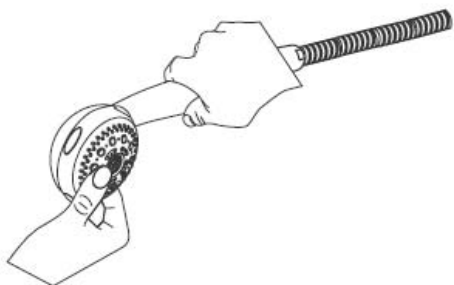
**Assembly**

---



Hansgrohe hand showers can be used together with hydraulically and thermally controlled continuous flow heaters if the flow pressure is at least 0,15 MPa and the Waterdim® function isn't activated.

## Cleaning



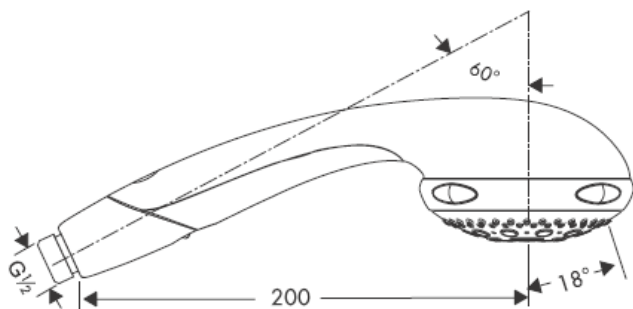
**hansgrohe**

# Istruzioni per Installazione



**Aktiva A8**  
28547XXX

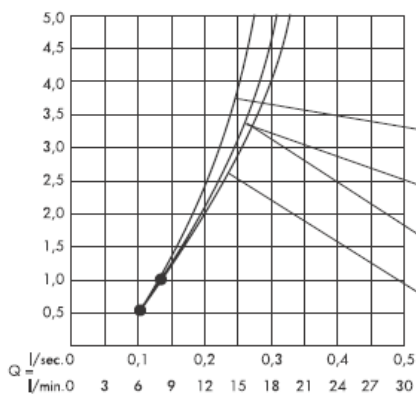
**hansgrohe**



Getto normale a pioggia



Getto areato



Getto massaggio

Dal • si garantisce la funzionalità.



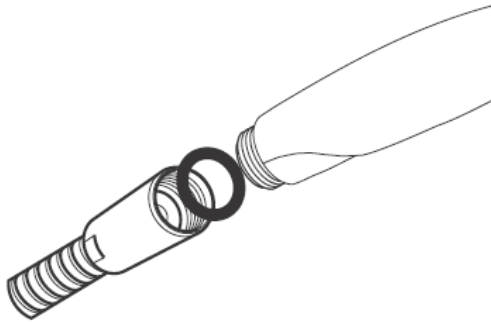
Getto mono

**Dati tecnici**

Pressione d'uso: max. 0,6 MPa  
Pressione d'uso consigliata: 0,1 – 0,4 MPa  
Temperatura dell'acqua calda: max. 60° C  
(1 MPa = 10 bar = 147 PSI)

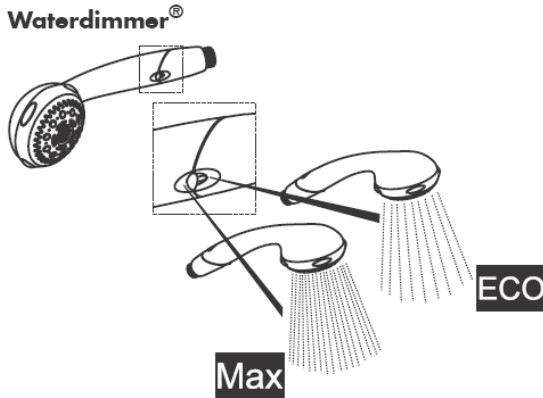
**Montaggio**

---



**Montaggio**

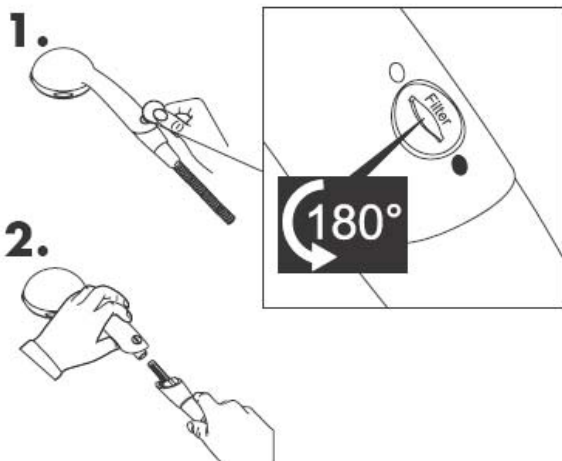
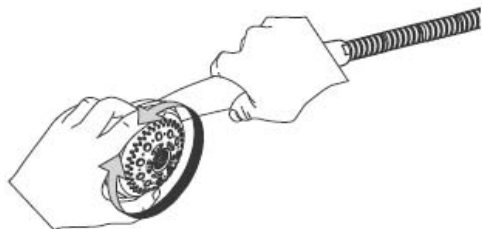
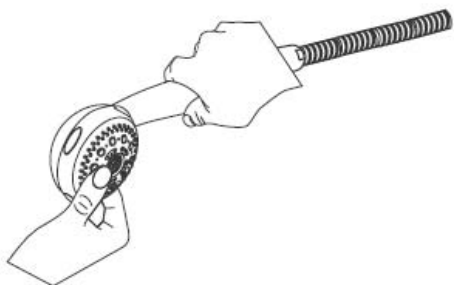
---



Le doccette Hansgrohe funzionano anche con scaldabagni instantanei se la pressione è di almeno 0,15 MPa. In questo caso togliere il Waterdimmer®.

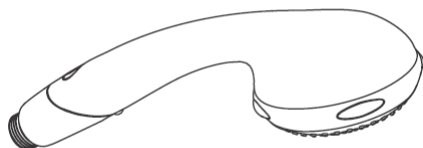


## Pulitura



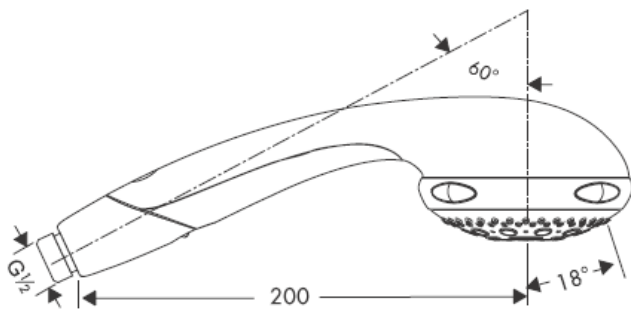
**hansgrohe**

# Instrucciones de montaje



**Aktiva A8**  
28547XXX

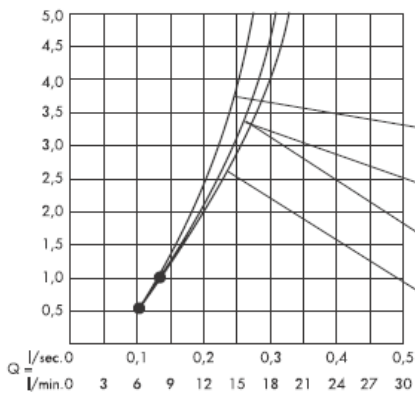
**hansgrohe**



Chorro de lluvia



Chorro espumoso



Chorro masaje



Chorro mono

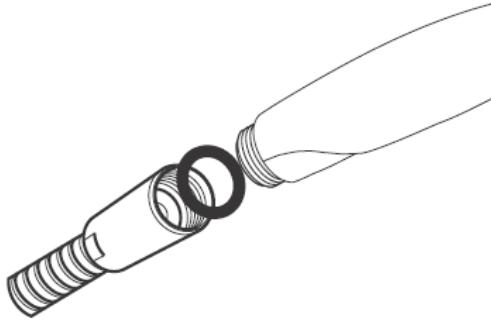
Mínimo • para el correcto funcionamiento.

**Datos técnicos**

Presión en servicio: max. 0,6 MPa  
Presión recomendada en servicio: 0,1 – 0,4 MPa  
Temperatura del agua caliente: max. 60° C  
(1 MPa = 10 bar = 147 PSI)

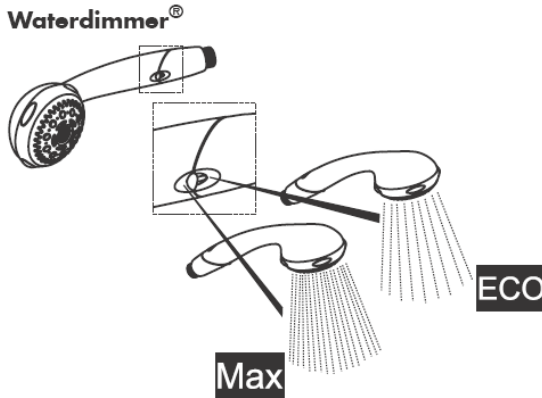
**Montaje**

---



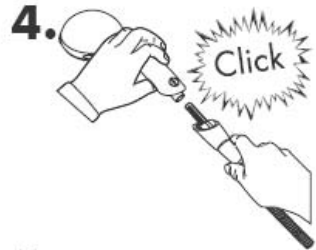
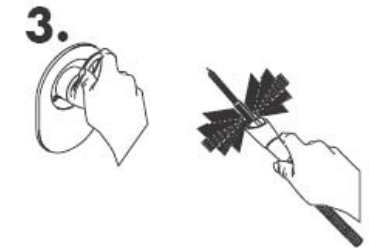
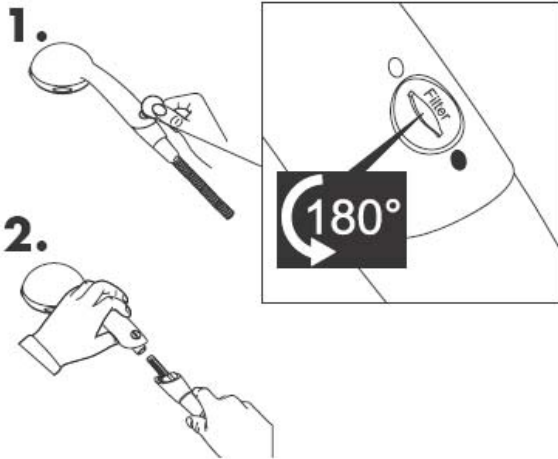
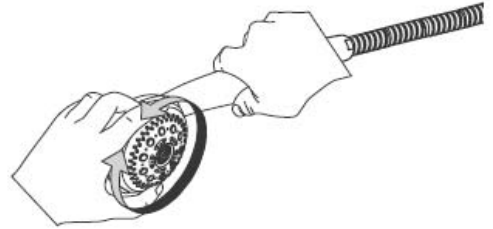
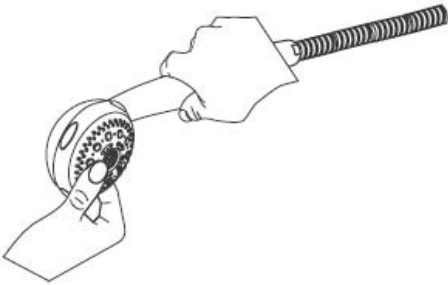
**Montaje**

---



Las teleduchas de Hansgrohe se pueden colocar en combinación con calentadores instantáneos siempre que no se usen las funciones Waterdim® y la presión dinámica del agua supere los 0,15 MPa.

## Limpiar



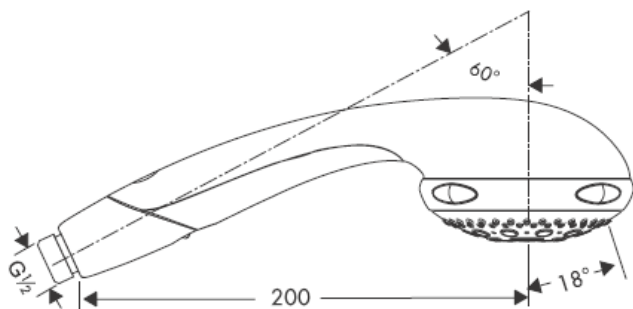
**hansgrohe**


# Handleiding



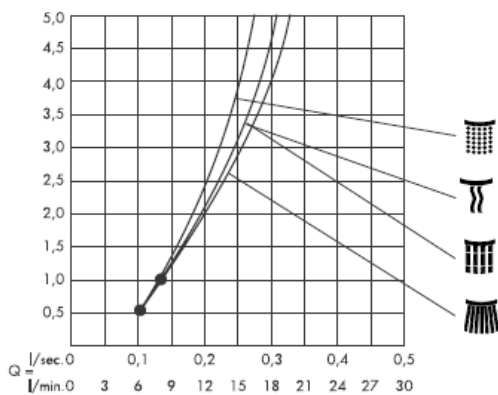
**Aktiva A8**  
28547XXX


**hansgrohe**




 Normale  
douchestraal

 Softstraal



 Massagestraal

Vanaf • is het functioneren gegarandeerd.

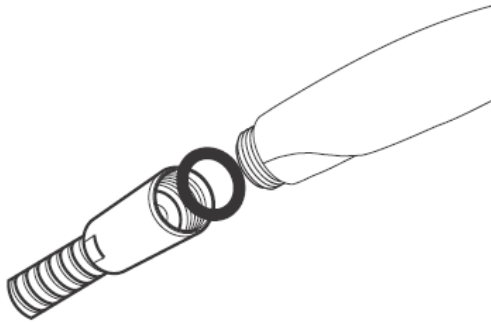
 Monostraal

**Technische gegevens**

Werkdruk: max. max. 0,6 MPa  
Aanbevolen werkdruk: 0,1 – 0,4 MPa  
Temperatuur warm water: max. 60° C  
(1 MPa = 10 bar = 147 PSI)

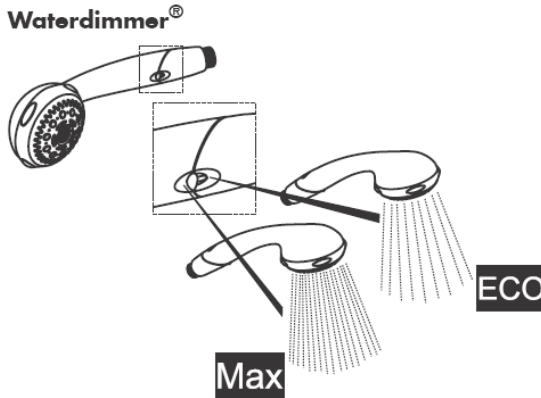
**Montage**

---



**Montage**

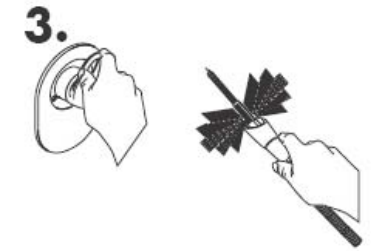
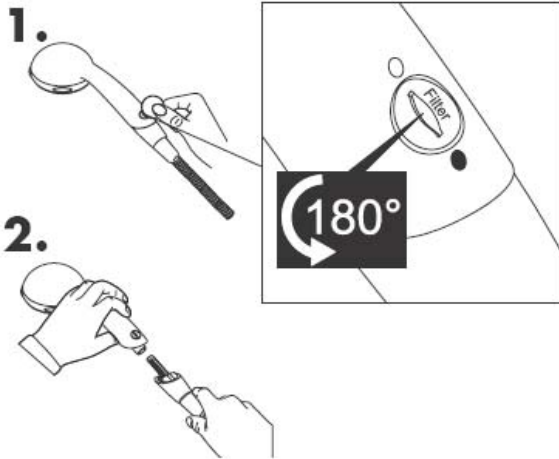
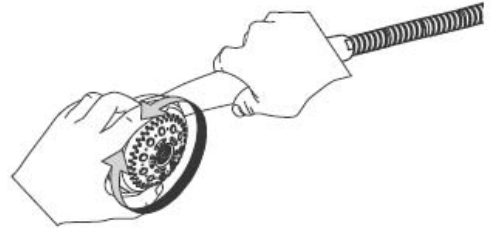
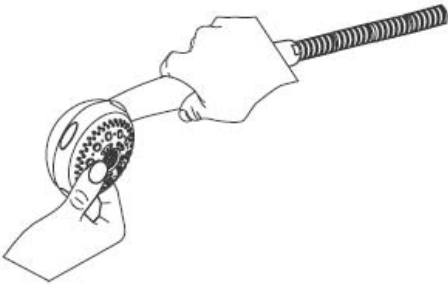
---



Hansgrohe handdouches kunnen worden gebruikt in combinatie met hydraulisch en thermisch gestuurde doorstroomtoestellen zonder de Waterdim-functie® bij een minimale druk van 0,15 MPa.

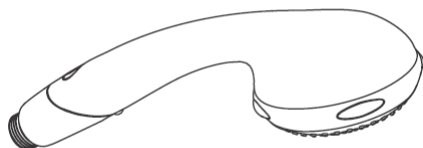


## Reinigen



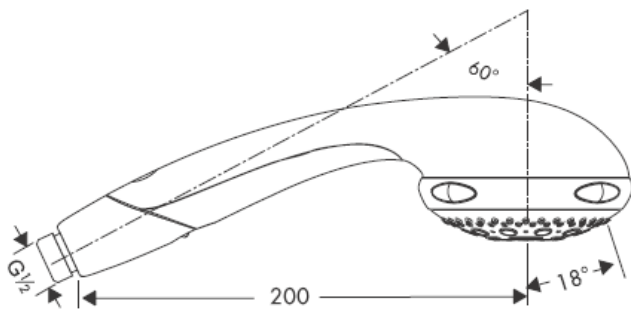
**hansgrohe**

# Monteringsvejledning



**Aktiva A8**  
28547XXX

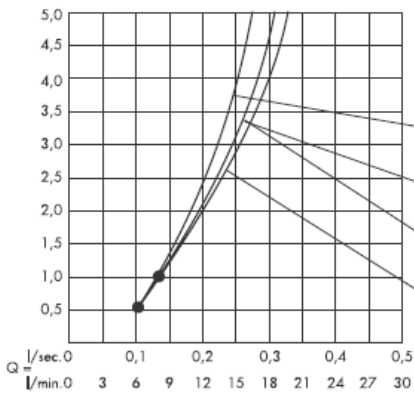
**hansgrohe**



Normalstråle



Softstråle



Massagebrus

Fra • er funktionen anvendelig.



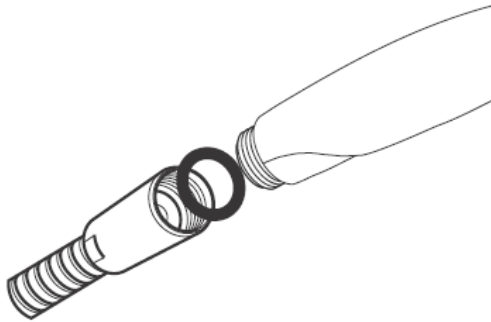
Monobrus

### Tekniske data

Driftstryk: max. 0,6 MPa  
Anbefalet driftstryk: 0,1 – 0,4 MPa  
Varmtvandstemperatur: max. 60° C  
(1 MPa = 10 bar = 147 PSI)

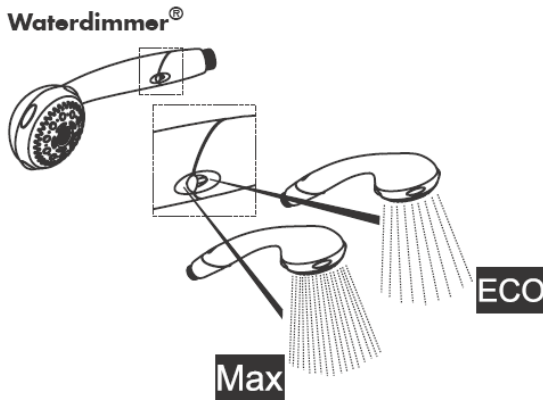
### Montering

---



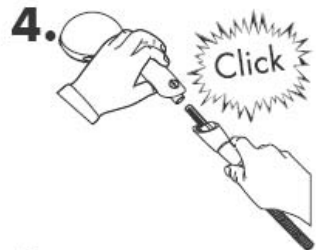
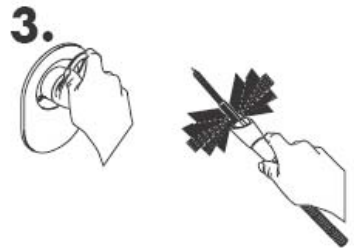
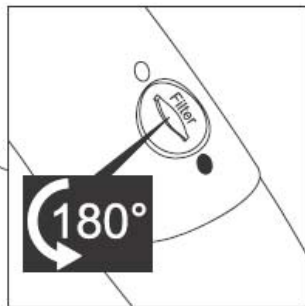
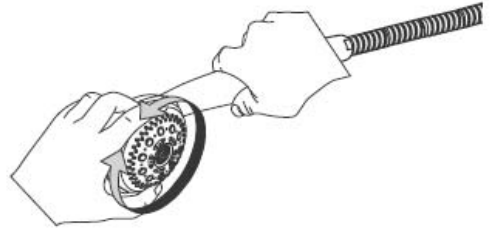
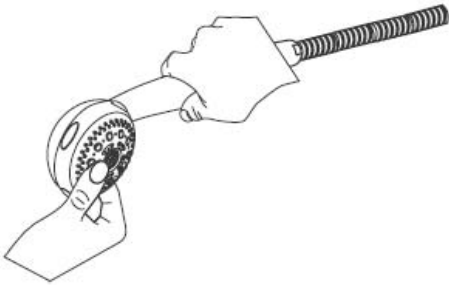
### Montering

---



Hansgrohe håndbrusere kan anvendes i forbindelse med hydraulisk og termisk styrede gennemstrømningsvandvarmere, uden Waterdim® funktion og ved et tryk på min. 0,15 MPa.

## Rengøring



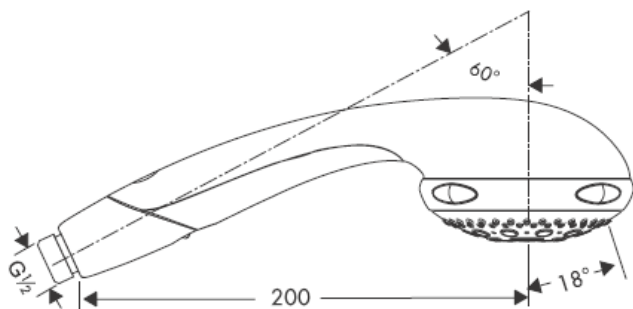
**hansgrohe**

# Manual de Instalación



**Aktiva A8**  
28547XXX

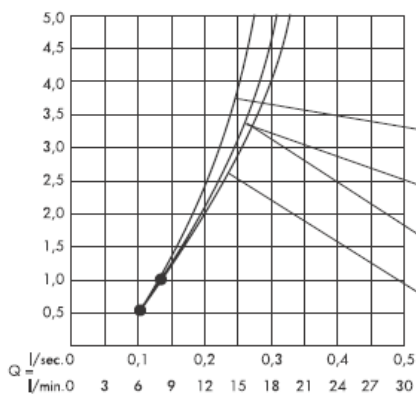
**hansgrohe**



operação normal



operação soft



operação massagem

• A partir deste ponto inicia-se o funcionamento correcto.



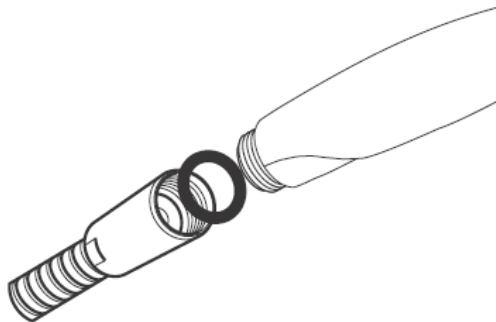
operação mono

### Dados Técnicos

Pressão de funcionamento: max. 0,6 MPa  
Pressão de func. recomendada: 0,1 – 0,4 MPa  
Temperatura da água quente: max. 60° C  
(1 MPa = 10 bar = 147 PSI)

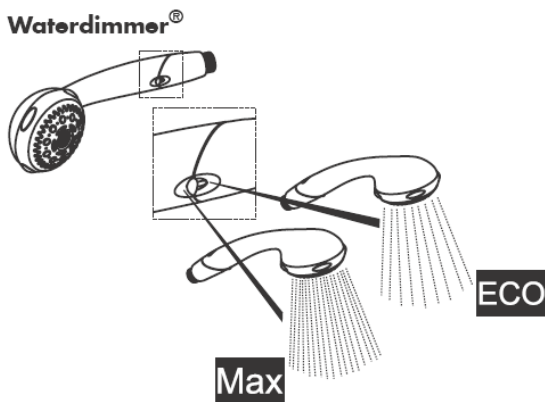
### Montagem

---



### Montagem

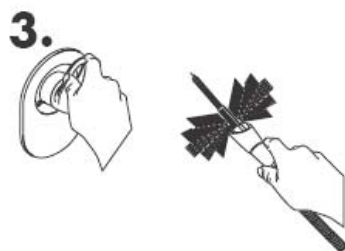
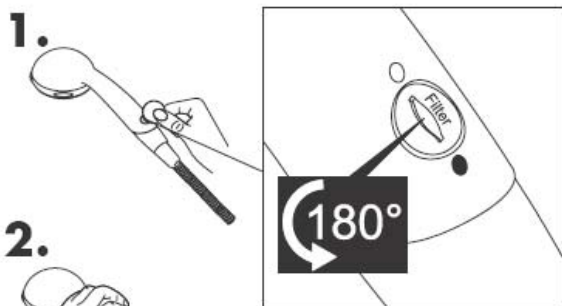
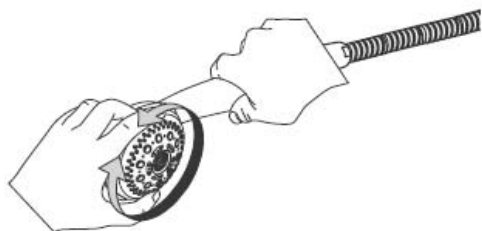
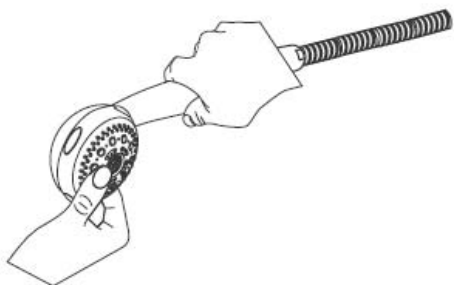
---



Os chuveiros de mão Hansgrohe podem ser utilizados com esquentadores controlados quer hidráulica quer térmicamente desde que a pressão seja no mínimo de 0,15 MPa e que não seja activada a função Waterdim®.

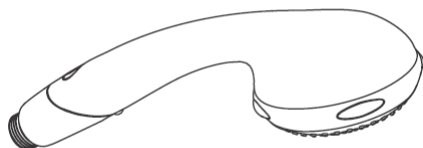


## Limpeza



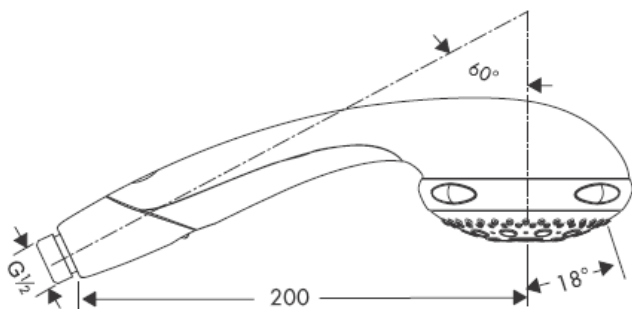
**hansgrohe**

# Instrukcja montażu



**Aktiva A8**  
28547XXX

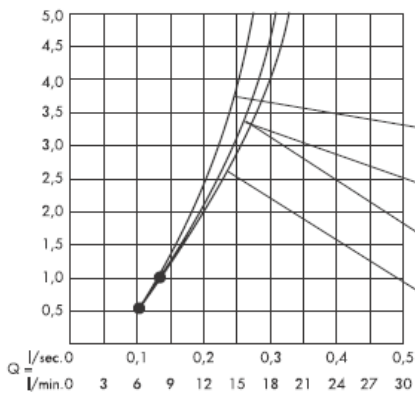
**hansgrohe**



Strumień normalny



Strumień miękki



Strumień masujący

Od • możliwe jest funkcjonowanie.

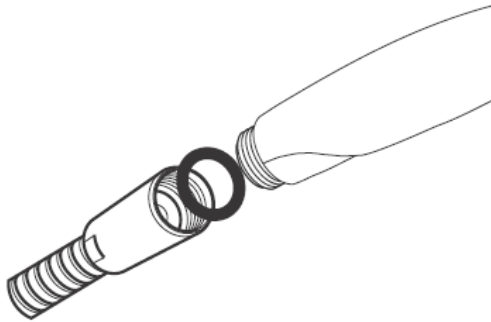


Strumień mono

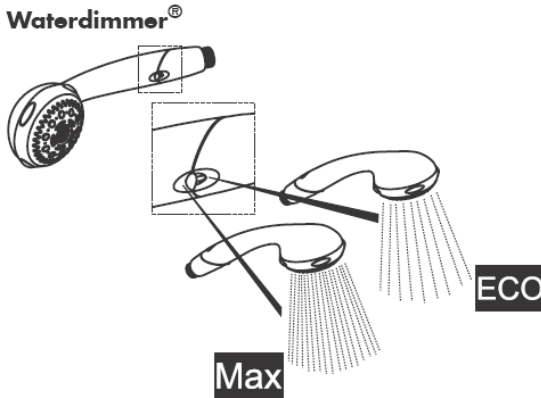
**Dane techniczne**

Ciśnienie robocze: max. 0,6 MPa  
Zalecane ciśnienie robocze: 0,1 – 0,4 MPa  
Temperatura wody gorącej: max. 60° C  
(1 MPa = 10 bary = 147 PSI)

**Montaż**

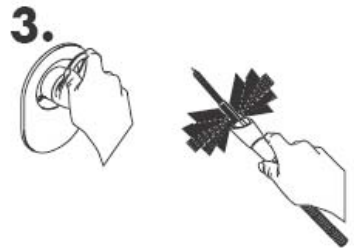
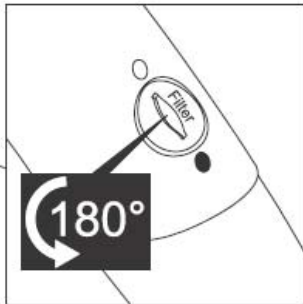
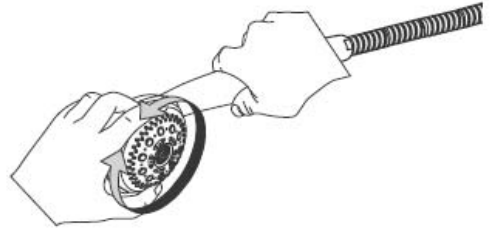
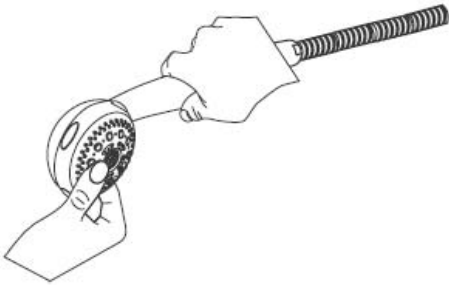


**Montaż**



Prysznice ręczne Hansgrohe mogą być stosowane w połączeniu z hydraulicznie i termicznie sterowanymi podgrzewaczami przepływowymi, bez zastosowania funkcji Waterdimmer® i przy ciśnieniu przepływu sięgającym przynajmniej 0,15 MPa.

## Czyszczenie



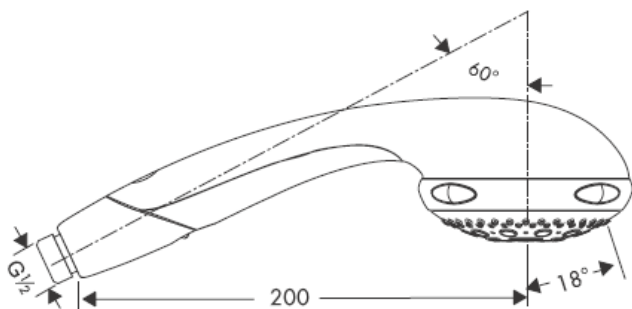
**hansgrohe**

# Montážní návod



**Aktiva A8**  
28547XXX

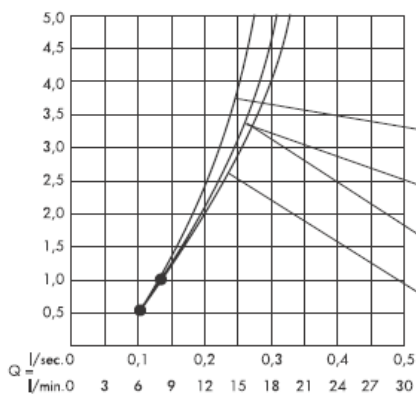
**hansgrohe**



Normální proud



Jemný proud



masážní proud

Od • je zaručená funkce



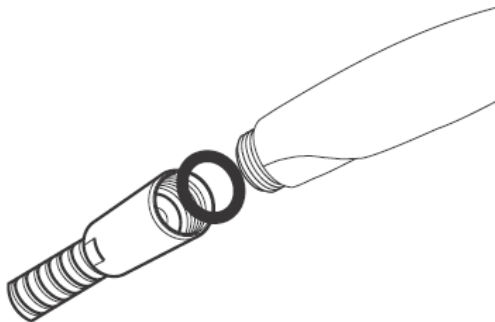
proud mono

### Technické údaje

Provozní tlak: max. 0,6 MPa  
Doporučený provozní tlak: 0,1 – 0,4 MPa  
Teplota horké vody: max. 60° C  
(1 MPa = 10 bar = 147 PSI)

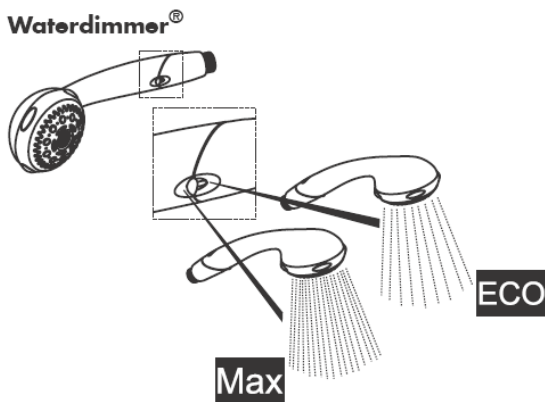
### Montáž

---



### Montáž

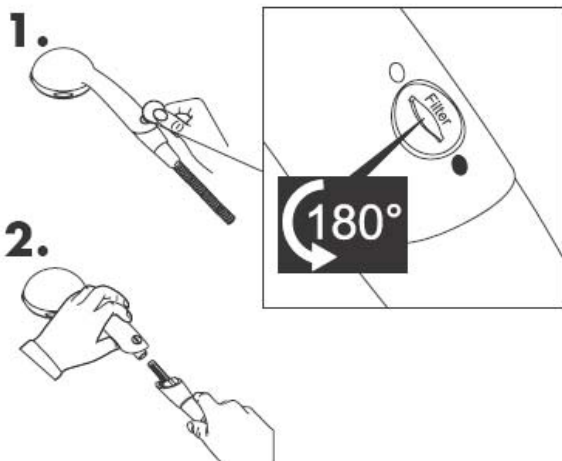
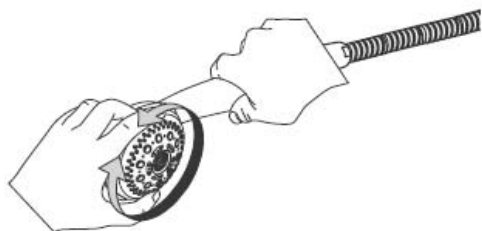
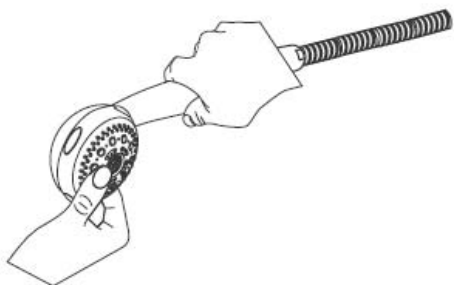
---



Ruční sprchy Hansgrohe je možné používat s hydraulicky a tepelně řízenými průtokovými ohřivači bez využití funkce Waterdim® a při minimálním tlaku 0,15 MPa.



## Čištění



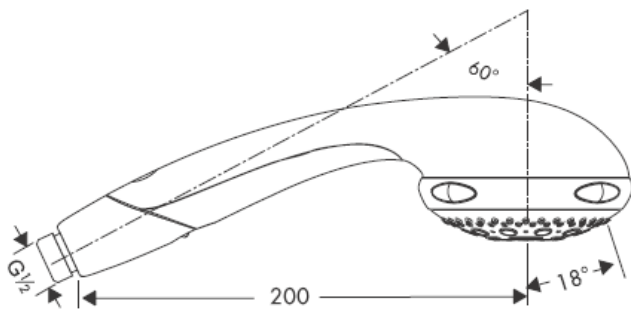
**hansgrohe**

# Montážny návod



**Aktiva A8**  
28547XXX

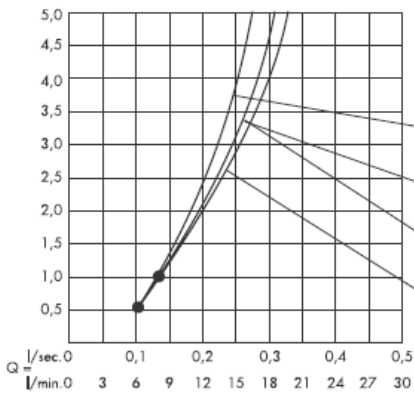
**hansgrohe**



Normálny prúd



Mierny prúd



masážny prúd

Od • je zaručená funkcia.

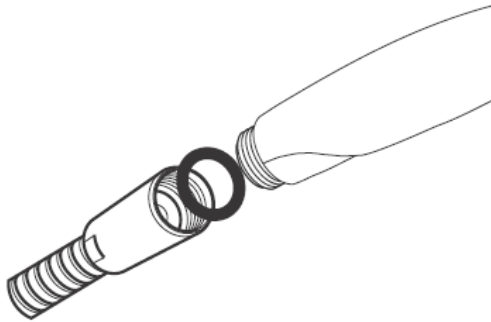


Jednotlivý prúd

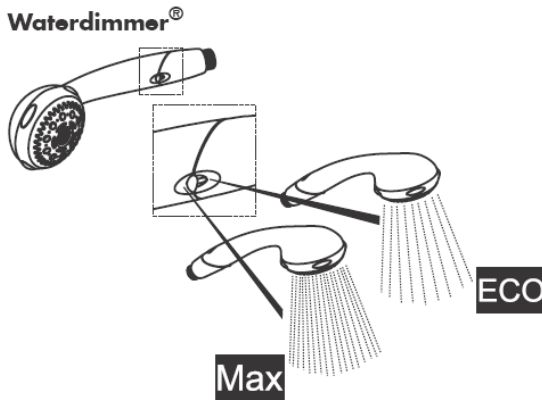
**Technické údaje**

Prevádzkový tlak: max. 0,6 MPa  
Doporučený prevádzkový tlak: 0,1 – 0,4 MPa  
Teplota teplej vody: max. 60° C  
(1 MPa = 10 bar = 147 PSI)

**Montáž**

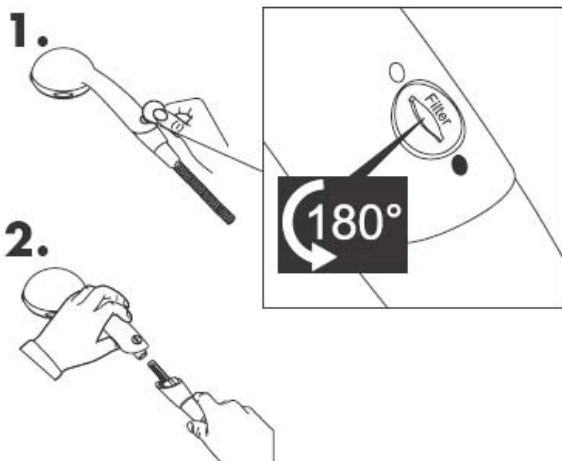
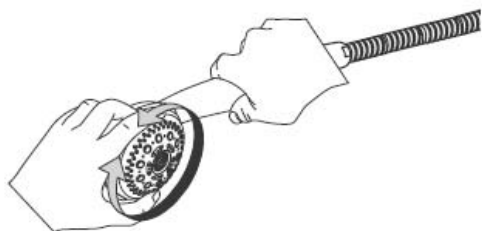
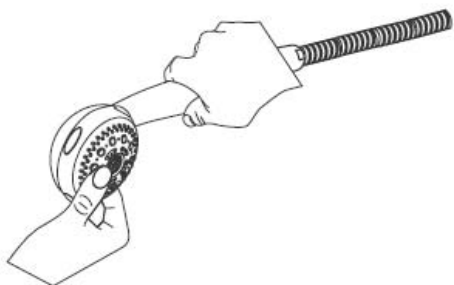


**Montáž**



Ručné sprchy Hansgrohe sa nesmú používať v spojení s hydraulicky a tepelne ovládanými prietokovými ohrievačmi bez použitia funkcie Waterdim® a s tlakom min. 0,15 MPa..

## Čištění



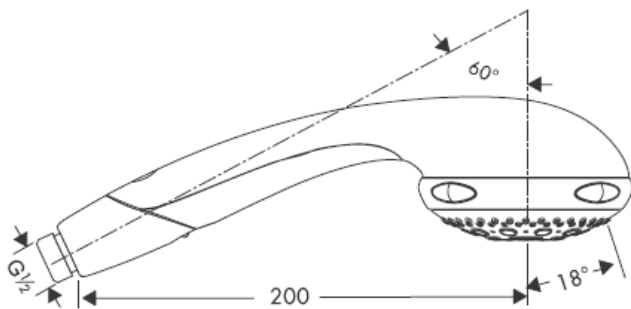
**hansgrohe**

# 组装说明



**Aktiva A8**  
28547XXX

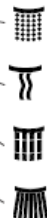
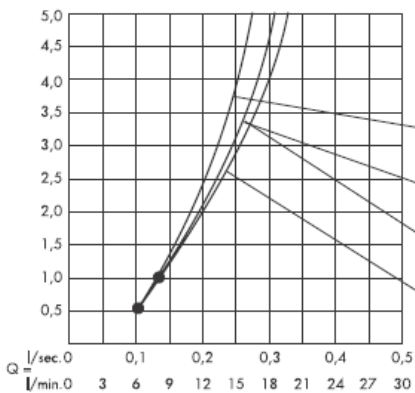
**hansgrohe**



普通水流



柔和水流



按摩喷嘴

从•开始，正常功能得以保证。

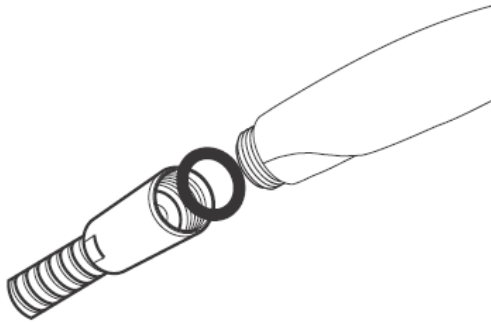


单喷头

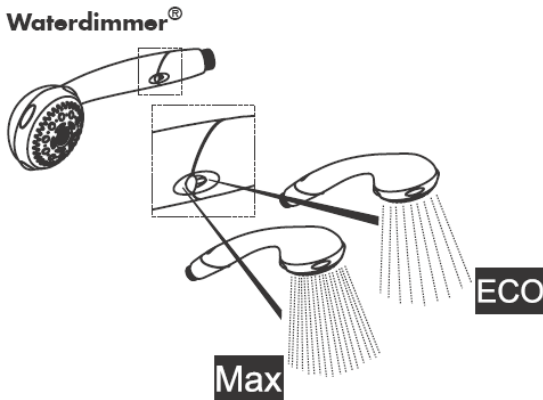
技术参数

工作压力: max. 0,6 MPa  
推荐工作压力: 0,1 – 0,4 MPa  
热水温度: max. 60° C  
(1 MPa = 10 bar = 147 PSI)

安装



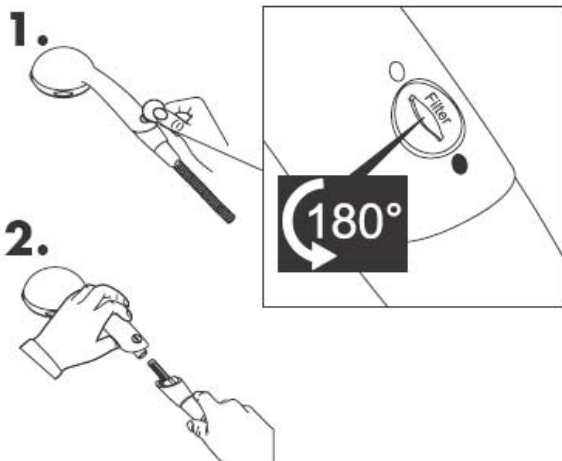
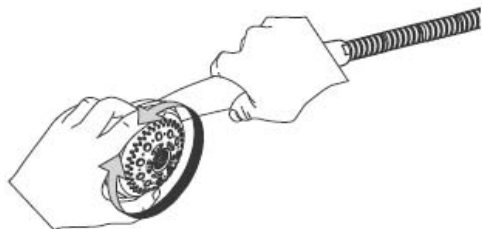
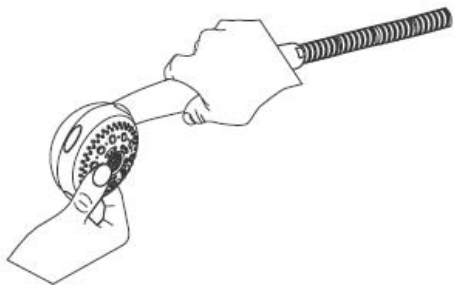
安装



如果水压达到0,15 MPa以上，且Waterdim®功能没有激活，汉斯格雅手持花洒可以和液压式或热控式连续流热水器一起使用。



清洗



**hansgrohe**

Hansgrohe · Postfach 1145 · D-77761 Schiltach · Telefon +49 (0) 78 36/51-1282 · Telefax +49 (0) 7836/511440  
E-Mail: info@hansgrohe.com · Internet: www.hansgrohe.com

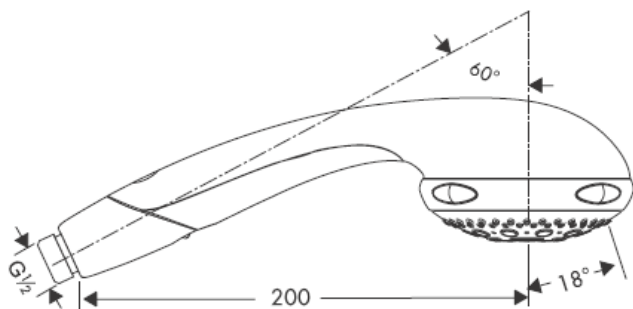
07/2005  
9.08571.01  
中文

# Инструкция по монтажу



**Aktiva A8**  
28547XXX

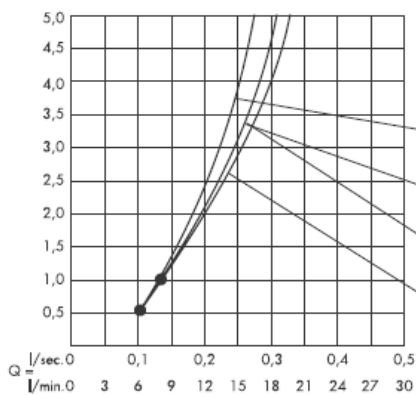
**hansgrohe**



Нормальная струя



Мягкая струя



Массажная струя

Гарантированное функционирование при показателях свыше



Одинарная струя

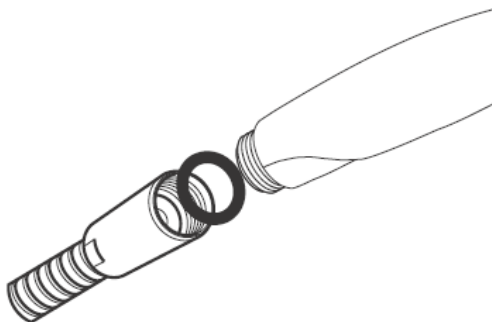
### Технические данные

|                                 |               |
|---------------------------------|---------------|
| Рабочее давление:               | max. 0,6 МПа  |
| Рекомендуемое рабочее давление: | 0,1 – 0,4 МПа |
| Температура горячей воды:       | max. 60° C    |

(1 МПа = 10 bar = 147 PSI)

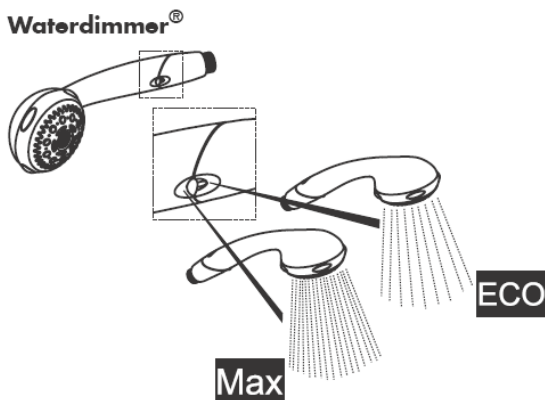
### Монтаж

---



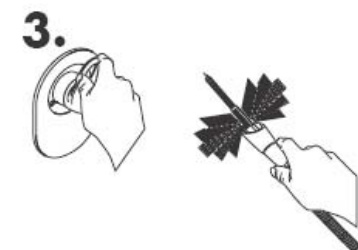
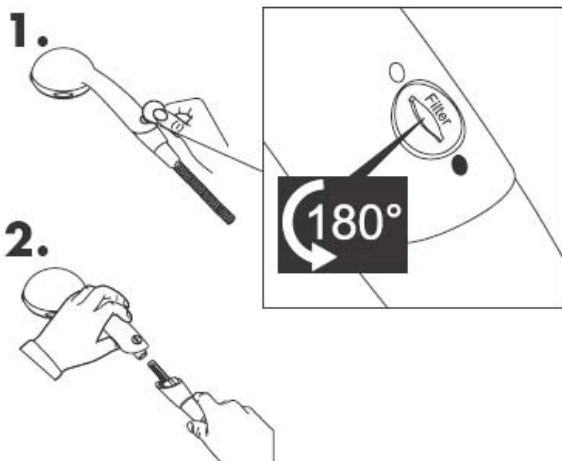
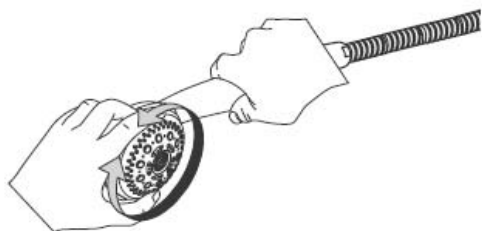
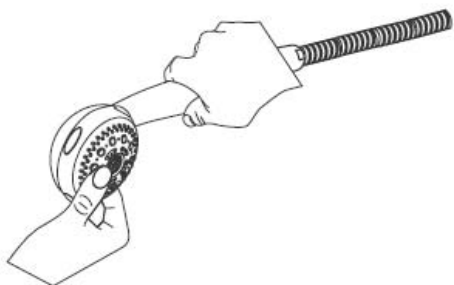
### Монтаж

---



Ручные души Hansgrohe могут использоваться в комбинации с проточными нагревателями с гидравлическим и электрическим управлением, без использования функции Waterdim® и при давлении истечения не менее 0,15 МПа.

## Очистка



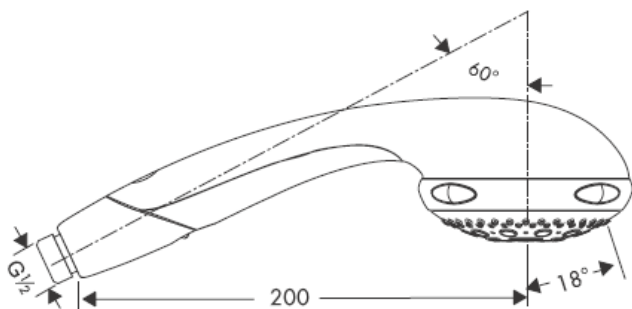
**hansgrohe**

# Szerelési útmutató



**Aktiva A8**  
28547XXX

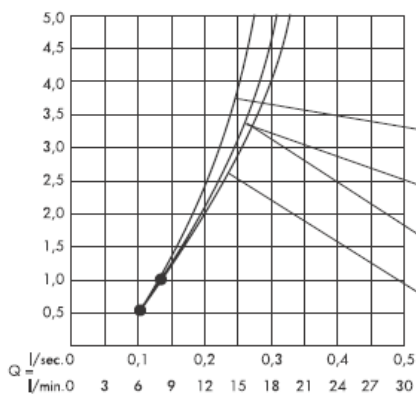
**hansgrohe**



Normálsugár



Lágysugár



Masszázs-sugár

A • -től működik az adott funkció.

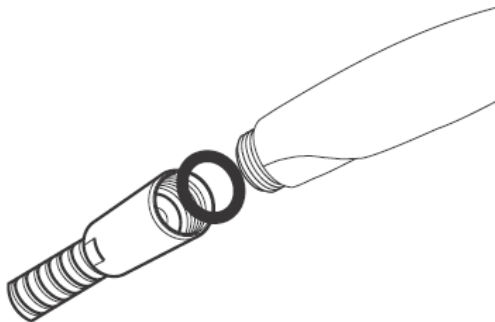


Monosugár

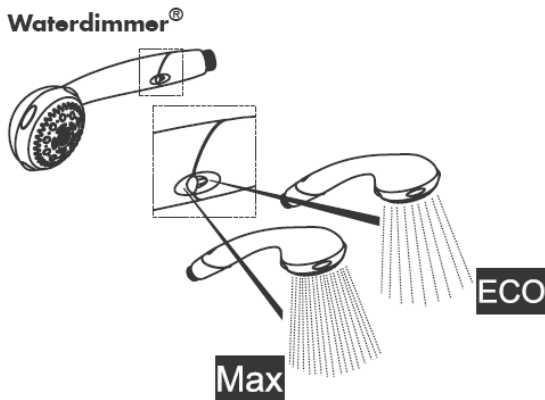
**Műszaki adatok**

Üzemi nyomás: max. 0,6 MPa  
Ajánlott üzemi nyomás: 0,1 – 0,4 MPa  
Forróvíz hőmérséklet: max. 60° C  
(1 MPa = 10 bar = 147 PSI)

**Szerelés**



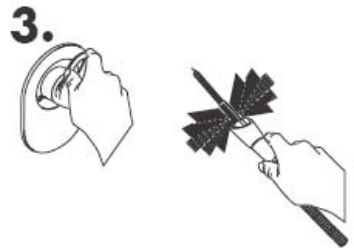
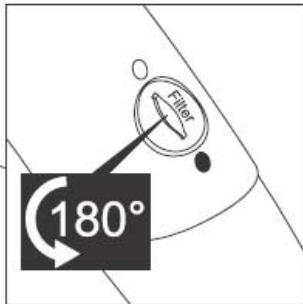
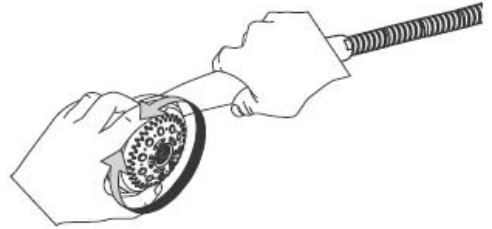
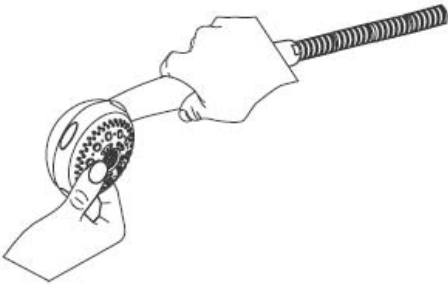
**Szerelés**



A Hansgrohe kézi zuhanyok hidraulikus és termikus vezérlésű átfolyós melegítővel kapcsolatban is használhatóak, a Waterdimmer® funkció használata nélkül, és legalább 0,15 MPa átfolyó nyomás esetén.



## Tisztítás



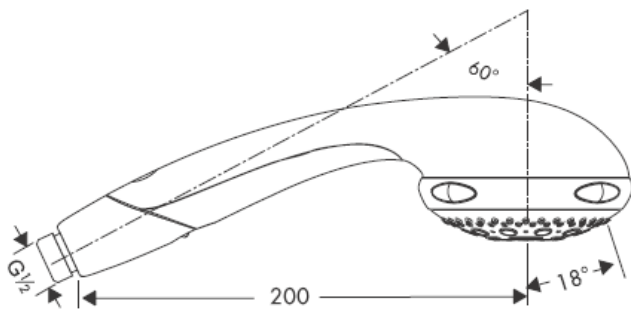
**hansgrohe**

# Asennusohje



**Aktiva A8**  
28547XXX

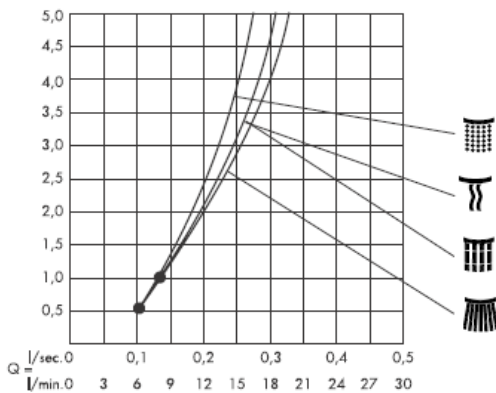
**hansgrohe**



Normaalisuihku



Pehmosuihku



Hierontasuihku



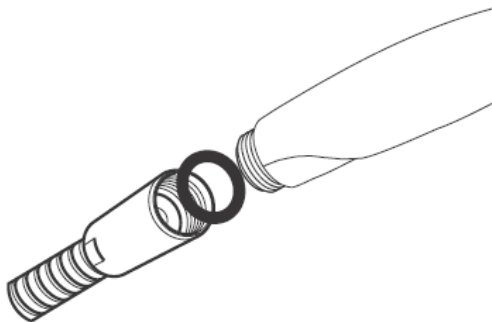
Yksittäissuihku

Tämä toiminta on taattuna • alkaen.

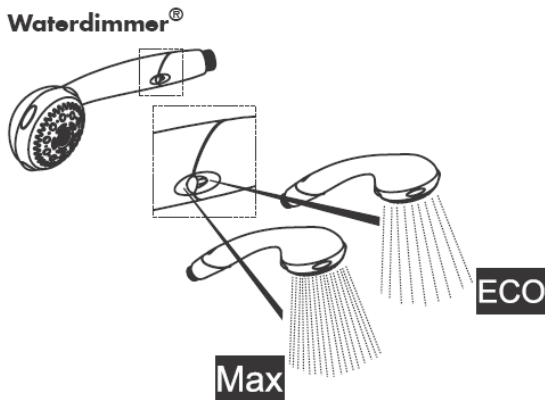
**Tekniset tiedot**

Käyttöpaine: max. 0,6 MPa  
Suositeltu käyttöpaine: 0,1 – 0,4 MPa  
Kuuman veden lämpötila: max. 60° C  
(1 MPa = 10 bar = 147 PSI)

**Asennus**

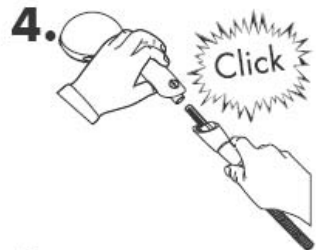
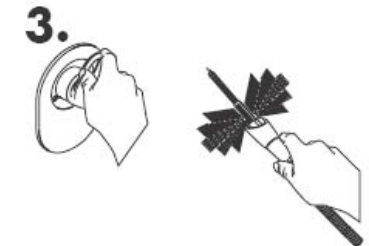
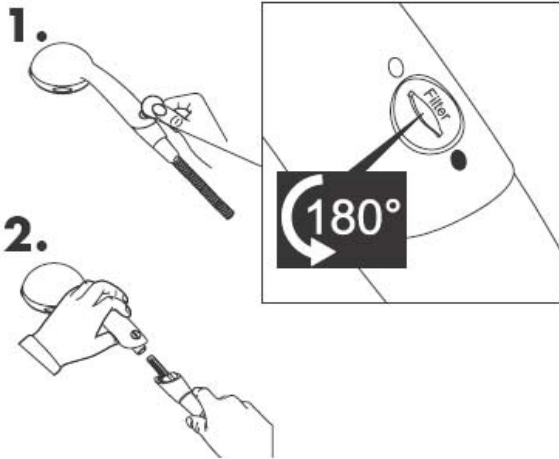
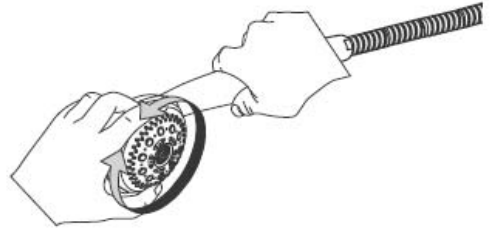
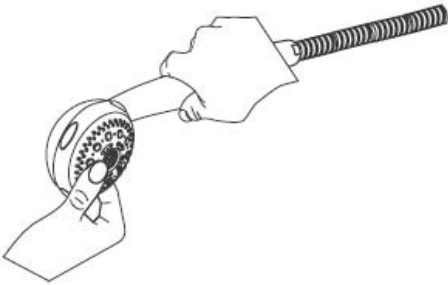


**Asennus**



Hansgrohe käsisuihkuja voi käyttää hydraulisesti tai termisesti ohjattujen läpivirtauskuumentimien yhteydessä, jos virtauspaine ennen kalustetta on vähintään 0,15 MPa. Waterdim®-toimintoa ei tällöin saa käyttää.

## Puhdistus



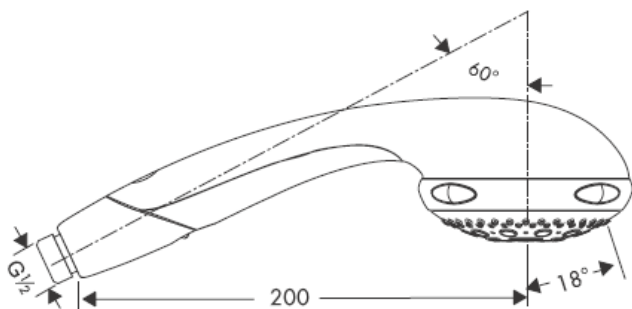
**hansgrohe**

# Monteringsanvisning



**Aktiva A8**  
28547XXX

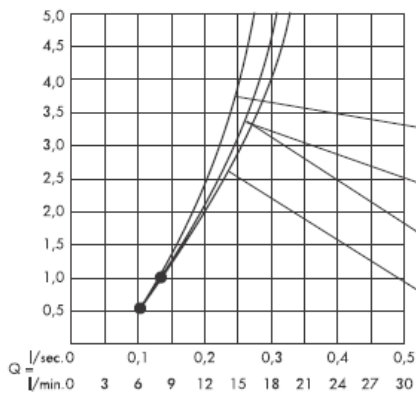
**hansgrohe**



Normalstråle



Softstråle



Massagestråle

Från • garanteras funktionen.

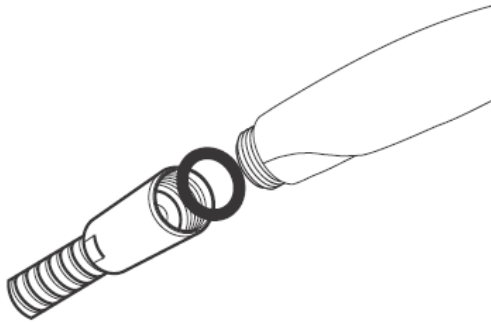


Monostråle

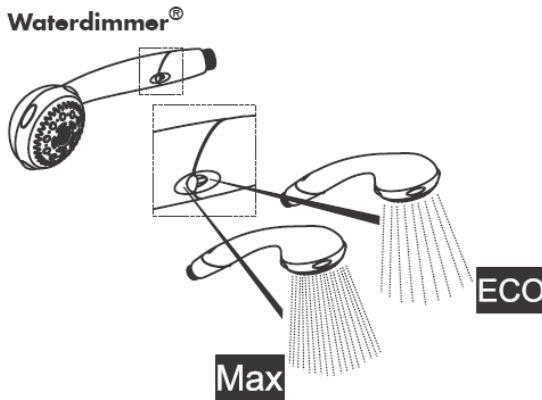
**Tekniska data**

Driftstryck: max. 0,6 MPa  
Rek. driftstryck: 0,1 – 0,4 MPa  
Varmvattentemperatur: max. 60° C  
(1 MPa = 10 bar = 147 PSI)

**Montering**



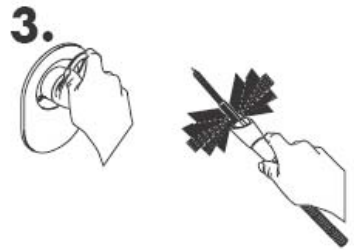
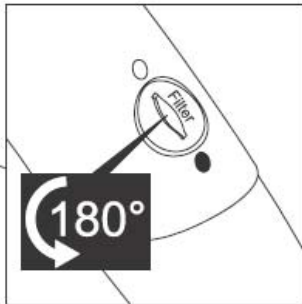
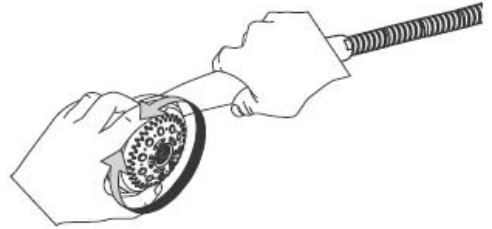
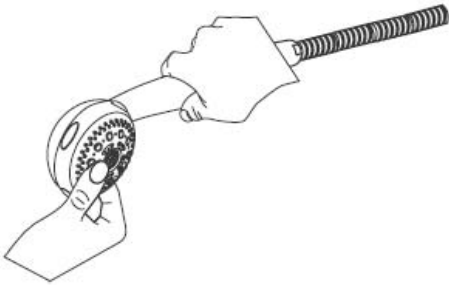
**Montering**



Hansgrohe handduschar kan användas tillsammans med hydrauliskt och termiskt styrda varmvattenberedare när flödestrycket uppgår till minst 0,15 MPa, utan att Waterdim® funktion behöver användas och vid ett flödestryck på minst 0,15 MPa.



## Rengöring



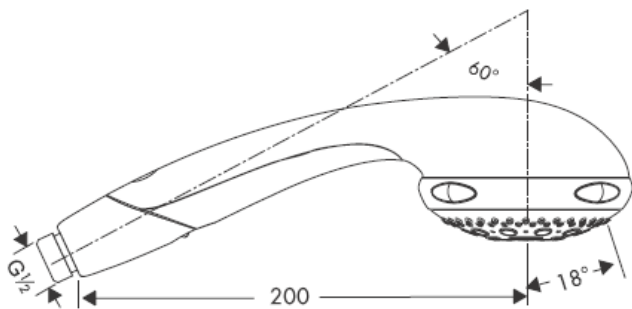
**hansgrohe**

# Montavimo instrukcijos



**Aktiva A8**  
28547XXX

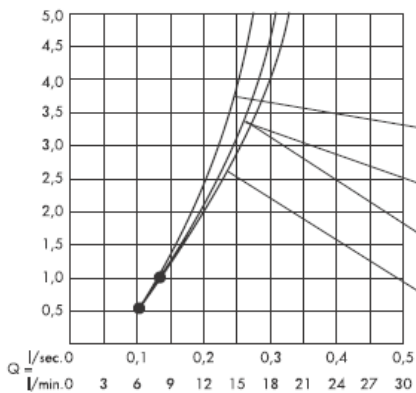
**hansgrohe**



Normali srovė



Minkšta srovė



Masajinė srovė



Mono srovė

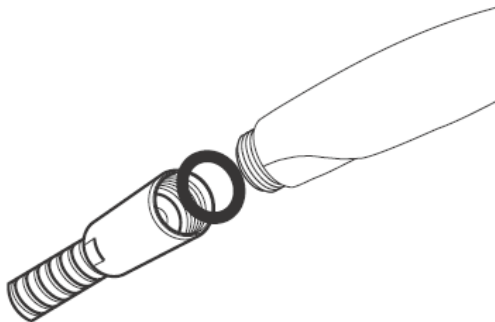
Nuo • funkcionavimas garantuotas

### Techniniai duomenys

Darbinis slėgis: max. 0,6 MPa  
Rekomenduojamas slėgis: 0,1 – 0,4 MPa  
Karšto vandens temperatūra: max. 60° C  
(1 MPa = 10 barų = 147 PSI)

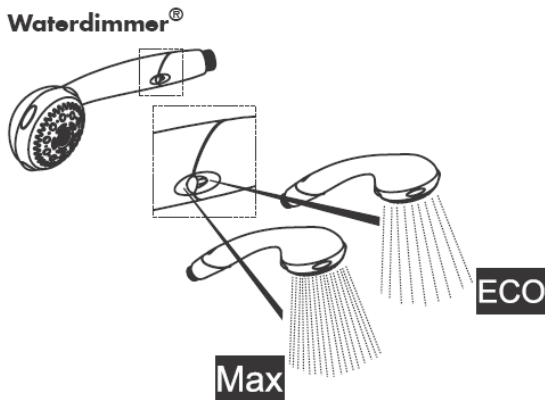
### Montavimas

---



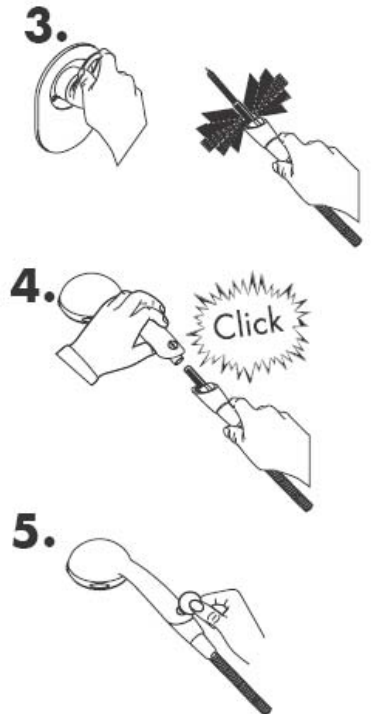
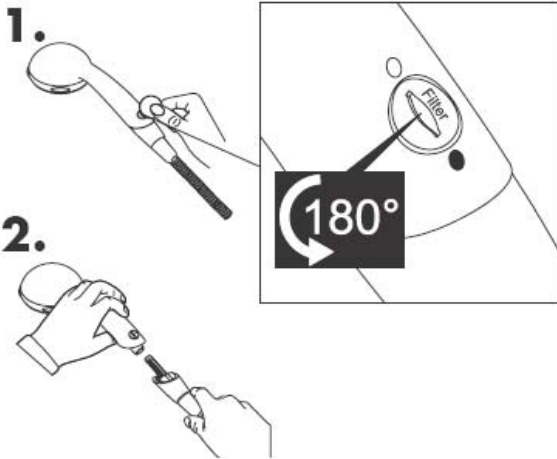
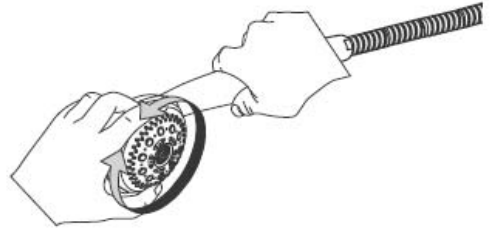
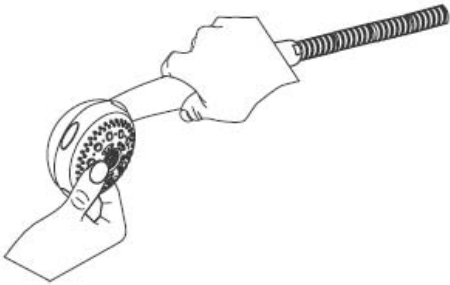
### Montavimas

---



"Hansgrohe" rankų dušas gali būti naudojamas su hidrauliškai ir termiškai reguliuojamais momentiniais šildikliais neįjungus "Waterdim®" funkcijos, kai vandens slėgis mažesnis kaip 0,15 MPa.

## Valymas



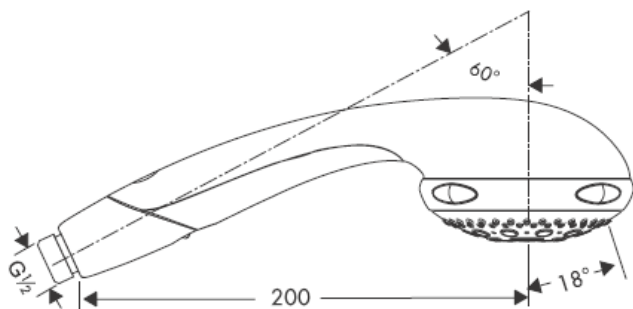
**hansgrohe**

# Uputstva za instalaciju



**Aktiva A8**  
28547XXX

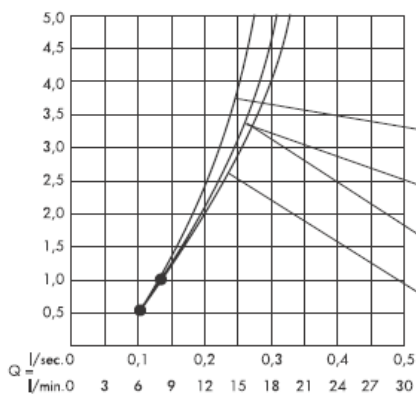
**hansgrohe**



Normalni mlaz



Nježni mlaz



Masažni mlaz

Zajamčena funkcija od • navise

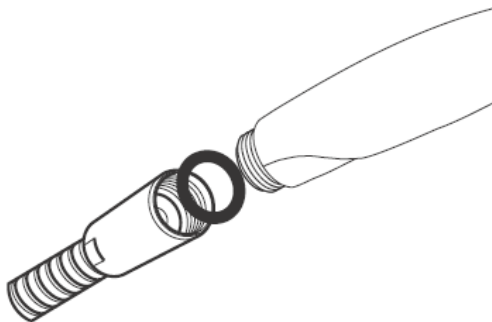


Mono mlaz

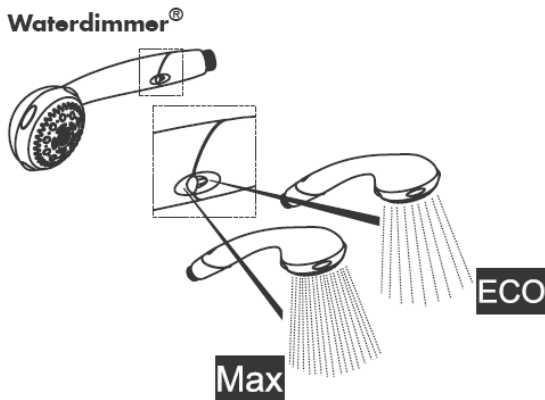
**Tehnički podatci**

Najveći dopušteni tlak: max. 0,6 MPa  
Preporučeni tlak: 0,1 – 0,4 MPa  
Temperatura vruće vode: max. 60° C  
(1 MPa = 10 bar = 147 PSI)

**Sastavljanje**



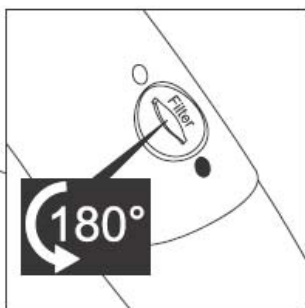
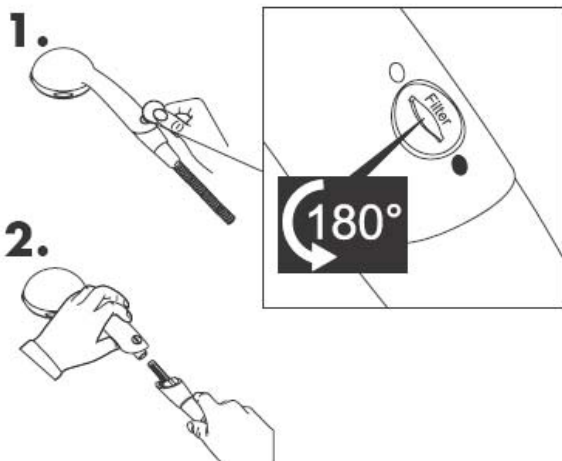
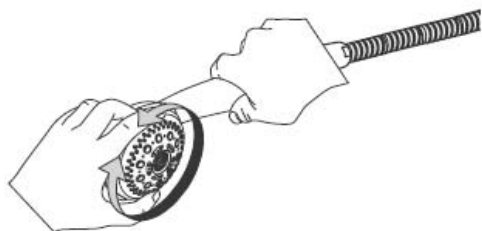
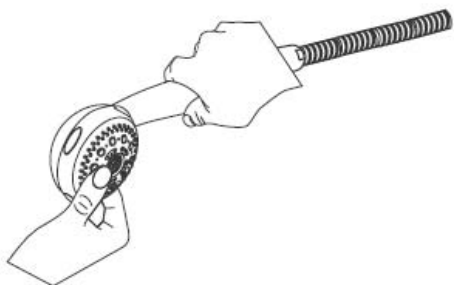
**Sastavljanje**



Hansgrohe ručni tuševi se mogu koristiti sa hidraulični i termički kontroliranim protočnim bojlerima bez upotrebe Waterdim funkcije te ako je tlak najmanje 0,15 MPa.



## Čišćenje



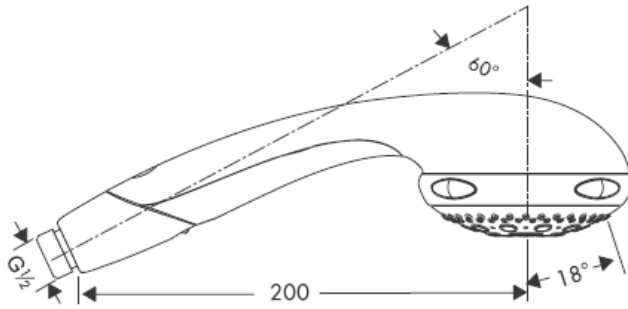
**hansgrohe**

# Montaj kılavuzu



**Aktiva A8**  
28547XXX

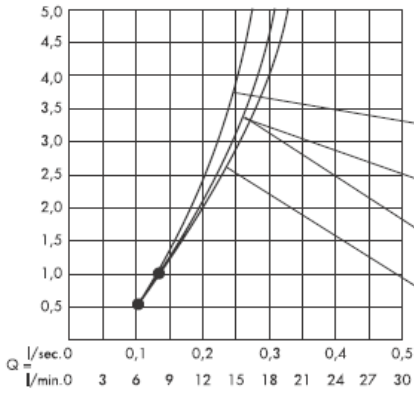
**hansgrohe**



Normal duş



Yumuşak



Masaj duşu

•den itibaren fonksiyon garanti edilmiştir.

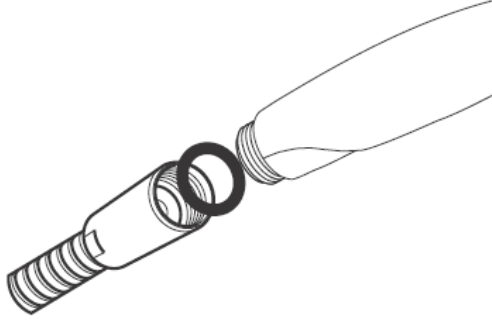


Tek su akışı

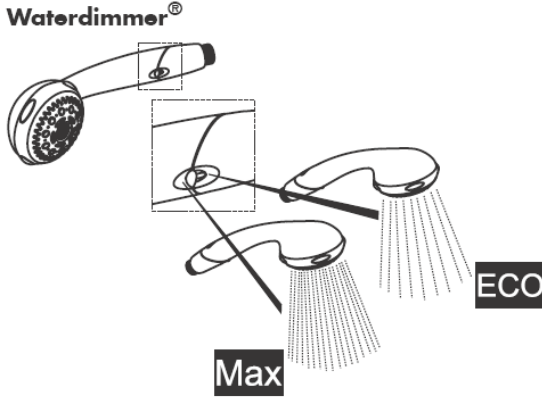
**Teknik bilgiler**

İşletme basıncı: max. 0,6 MPa  
Tavsiye edilen işletme basıncı: 0,1 – 0,4 MPa  
Sıcak su sıcaklığı: max. 60° C  
(1 MPa = 10 bar = 147 PSI)

**Montajı**

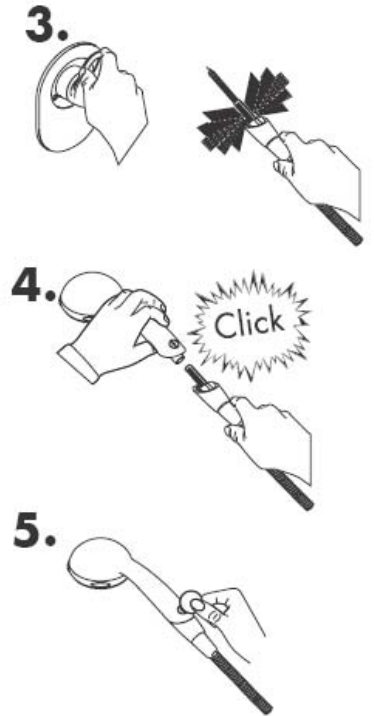
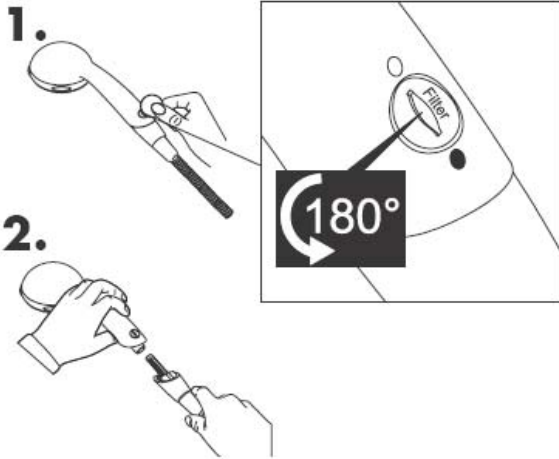
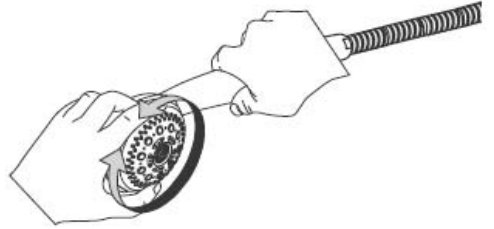
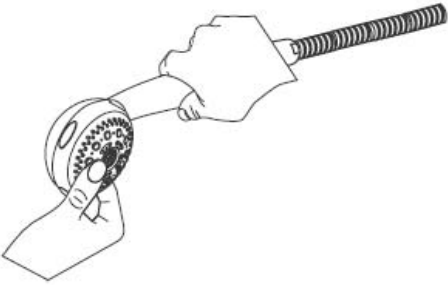


**Montajı**



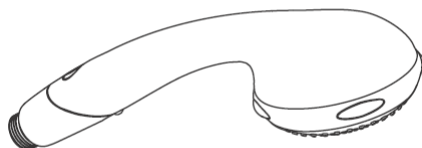
Hansgrohe el duşları, hidrolik ve termik kumandalı şofbenlerle, Waterdim® fonksiyonunu kullanmadan ve en az 0,15 MPa yüksekliğinde bir su basıncıyla işletilebilir.

## Temizleme



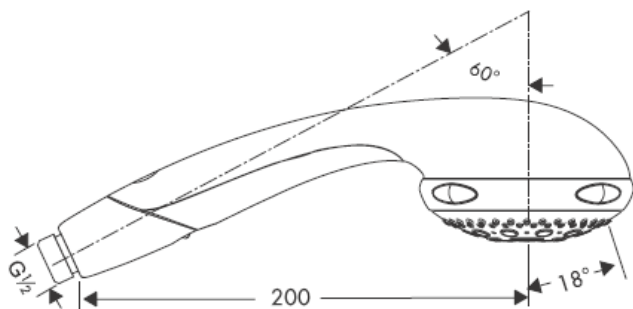
**hansgrohe**

# Instrucțiuni de montare




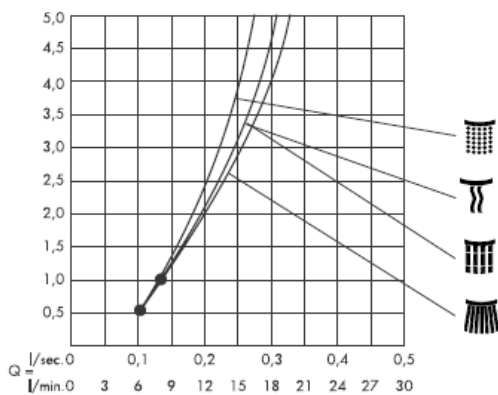
**Aktiva A8**  
28547XXX


**hansgrohe**




 jet normal

 Jet slab de apă



 Jet de masaj

Începând de la • funcționarea este garantată.

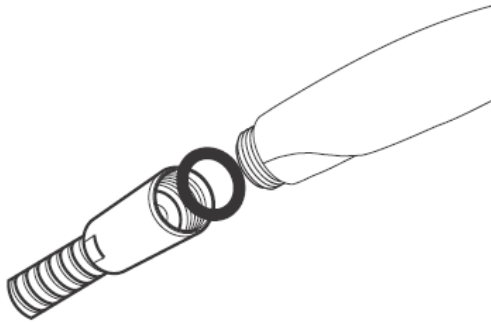
 Jet simplu

**Date tehnice**

Presiune de funcționare: max. 0,6 MPa  
Presiune de funcționare recomandată: 0,1 – 0,4 MPa  
Temperatura apei calde: max. 60° C  
(1 MPa = 10 bar = 147 PSI)

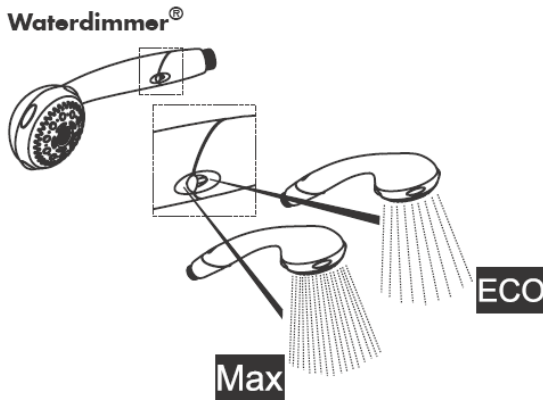
**Montare**

---



**Montare**

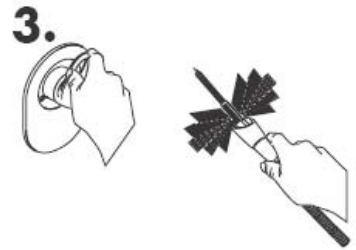
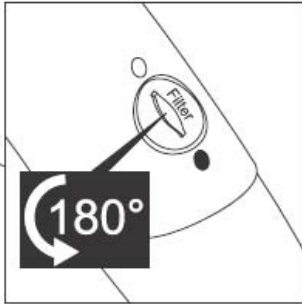
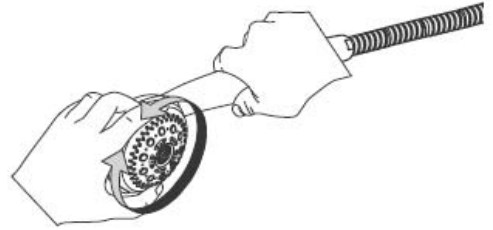
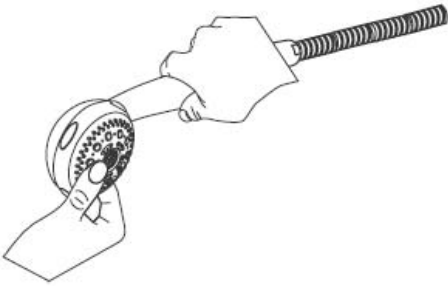
---



Dușurile de mână Hansgrohe pot fi utilizate cu boiler instant cu comandă hidraulică sau termică, fără utilizarea funcției Waterdim® dacă presiunea de apă este de min. 0,15 MPa.



## Curățare



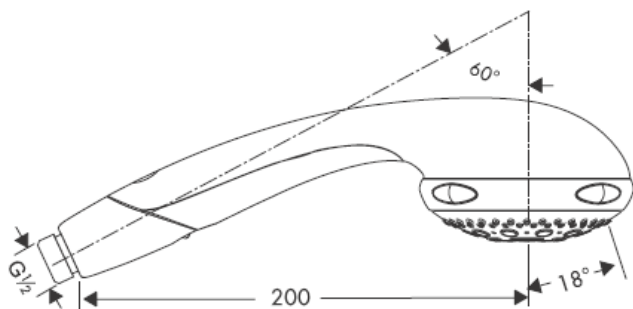
**hansgrohe**

# Οδηγία συναρμολόγησης



**Aktiva A8**  
28547XXX

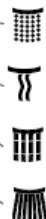
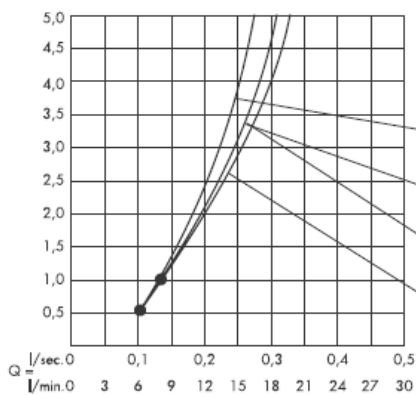
**hansgrohe**



Κανονική δέσμη νερού



μαλακή δέσμη νερού



Δέσμη υδρομασάζ

Αυτή η λειτουργία διασφαλίζεται από το σημείο κι έπειτα

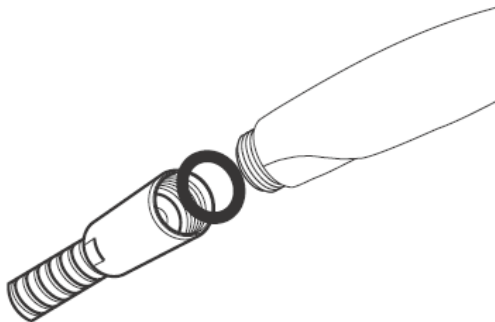


Μονή δέσμη νερού

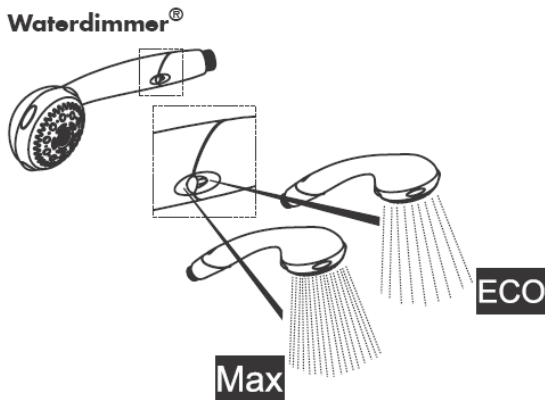
### Τεχνικά Χαρακτηριστικά

Λειτουργία πίεσης: max. 0,6 MPa  
Συνιστώμενη λειτουργία πίεσης: 0,1 – 0,4 MPa  
Θερμοκρασία ζεστού νερού: max. 60° C  
(1 MPa = 10 bar = 147 PSI)

### Συναρμολόγηση

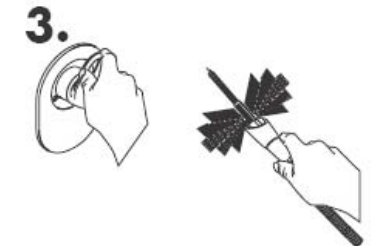
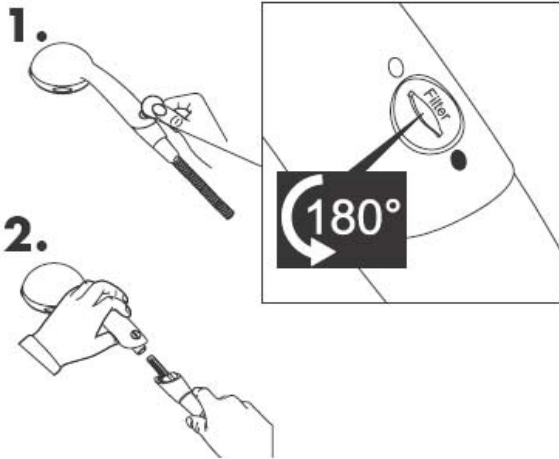
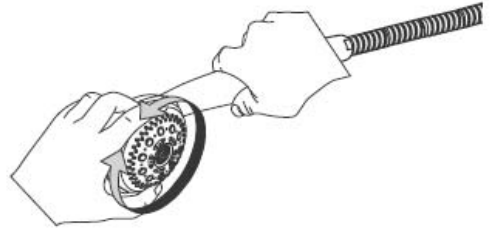
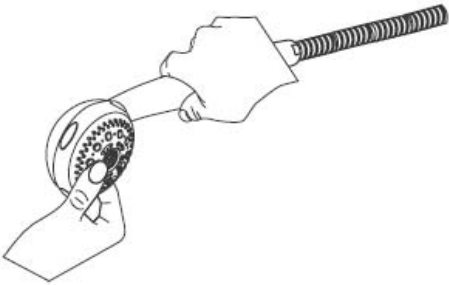


### Συναρμολόγηση



Οι καταιονιστήρες χειρός Hansgrohe μπορούν να συνδυαστούν με ταχυθερμοσίφωνες υδραυλικού και θερμικού ελέγχου, χωρίς χρήση της λειτουργίας ελαχιστοποίησης νερού Waterdim® και με πίεση ροής τουλάχιστον 0,15 MPa.

## Καθαρισμός



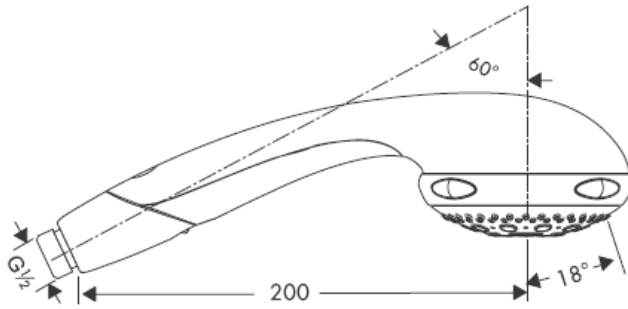
**hansgrohe**

# تعليمات التجميع



**Aktiva A8**  
28547XXX

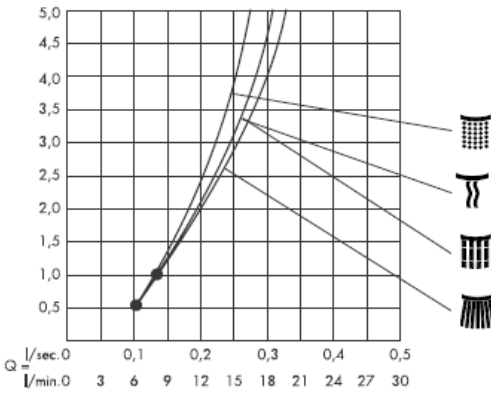
**hansgrohe**



رشاش عادي



رشاش مرن



تيار التدليك



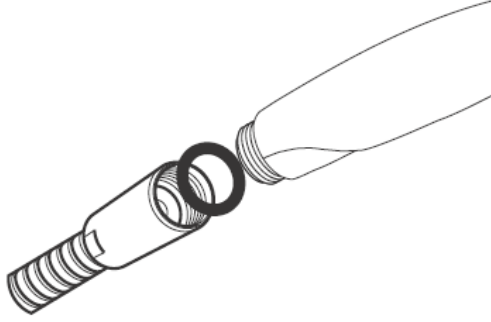
رشاش مفرد

من • الوظيفة مضمونة.

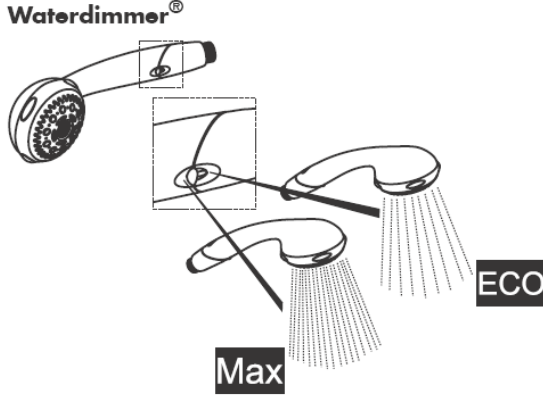
max. 0,6 MPa  
0,1 – 0,4 MPa  
max. 60° C

ضغط التشغيل:  
ضغط التشغيل الموصى به:  
درجة حرارة الماء الساخن:  
( 10 بار = MPa = 147 PSI )

التركيب

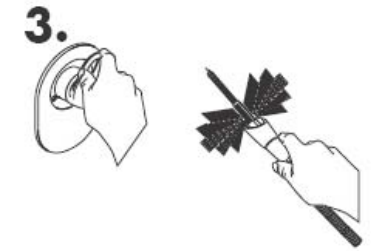
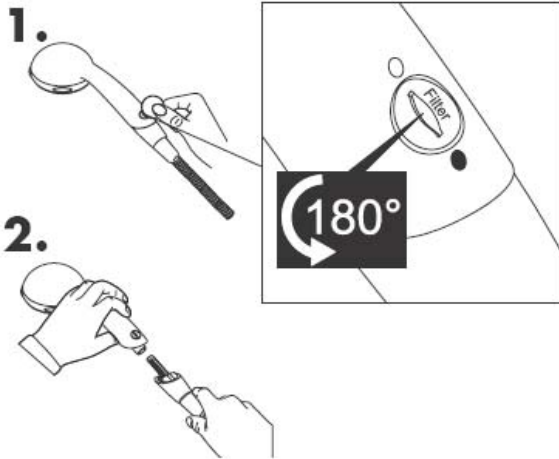
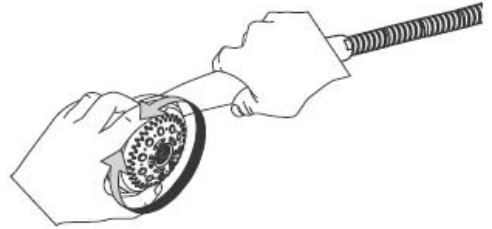
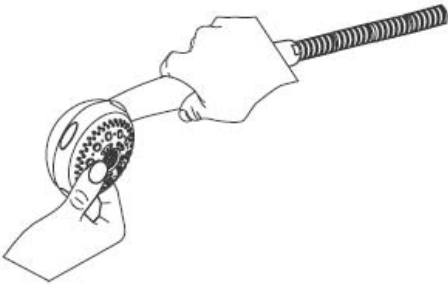


التركيب



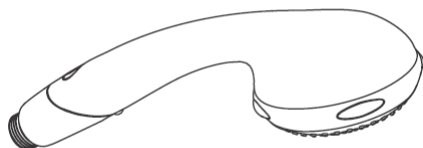
يمكن استخدام الدش اليدوي من هانز جروهه مع سخانات تدفق الماء ذات التحكم الهيدروليكي أو الحراري، مع ضغط تدفق لا يقل عن 1.5 بار، ومع عدم تنشيط وظيفة Waterdim®.





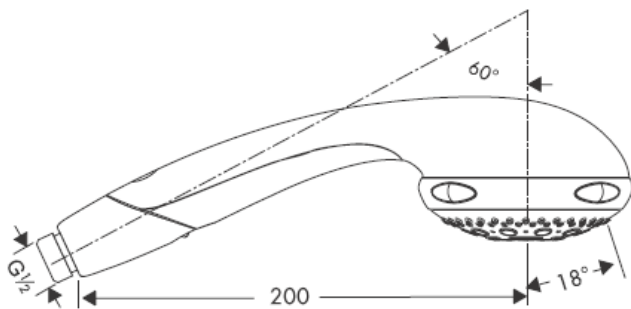
**hansgrohe**

# Navodila za montažo



**Aktiva A8**  
28547XXX

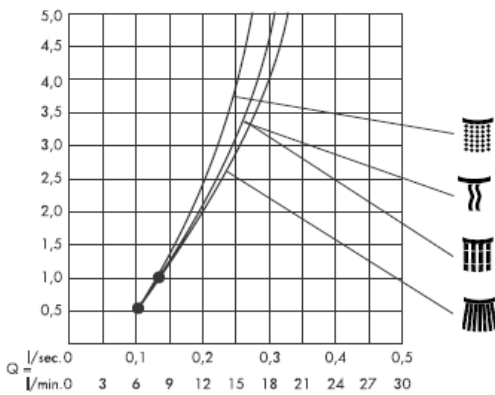
**hansgrohe**



Normalen curek



Mehki curek



Masažni curek



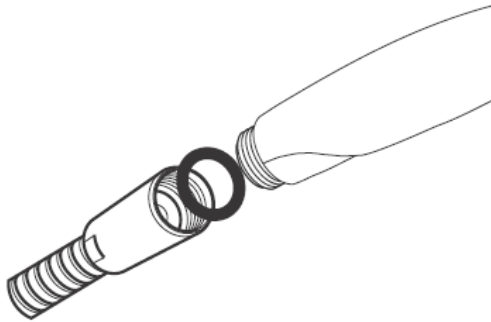
Jet de mono

Od • je delovanje zagotovljeno.

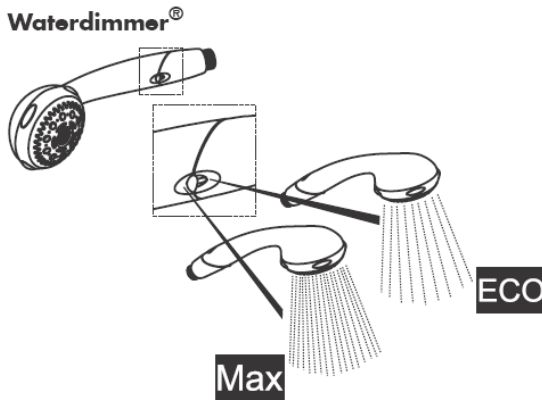
**Tehnični podatki**

Delovni tlak: max. 0,6 MPa  
Priporočeni delovni tlak: 0,1 – 0,4 MPa  
Temperatura tople vode: max. 60° C  
(1 MPa = 10 bar = 147 PSI)

**Montaža**

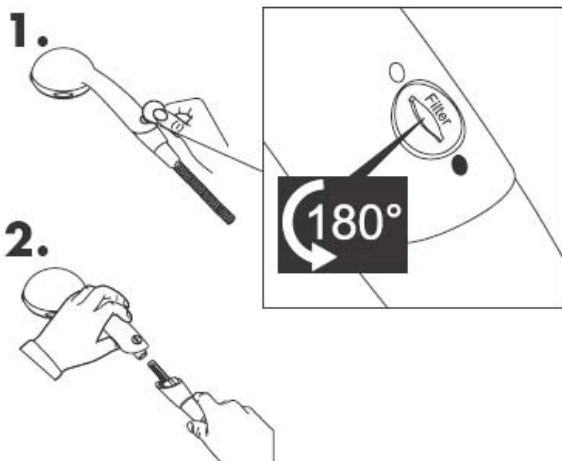
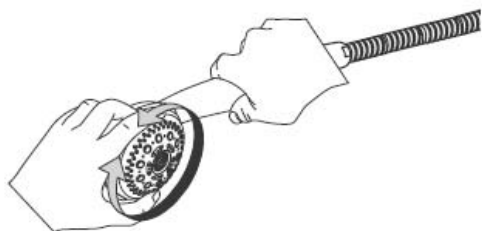
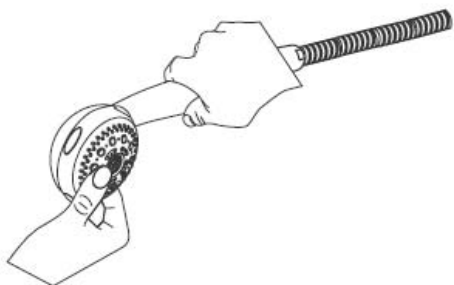


**Montaža**



Ročne prhe Hansgrohe lahko uporabljate v povezavi s hidravlično in termično uravnavanimi pretočnimi grelniki, če ne uporabite funkcije waterdim (omejevanje pretoka vode) in če je pretočni tlak najmanj 0,15 MPa.

## Čiščenje



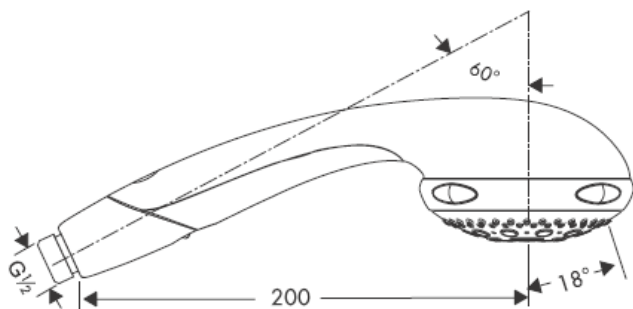
**hansgrohe**

# Paigaldusjuhend




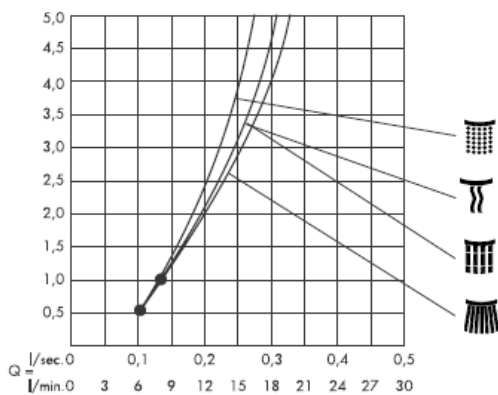
**Aktiva A8**  
28547XXX


**hansgrohe**



 tavajuga

 Pehme juga



 Massaažipihusti

Alates • on funktsioneerimine garanteeritud

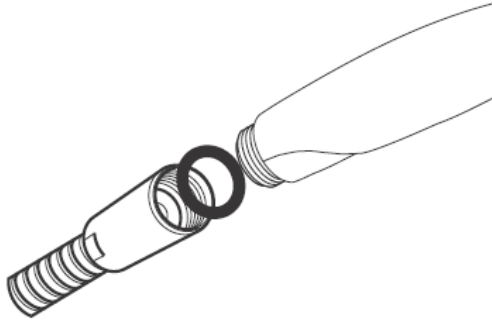
 Monojuga

### Tehnilised andmed

Töörõhk max. 0,6 MPa  
Soovitav töörõhk: 0,1 – 0,4 MPa  
Kuumade vee temperatuur: max. 60° C  
(1 MPa = 10 baari = 147 PSI)

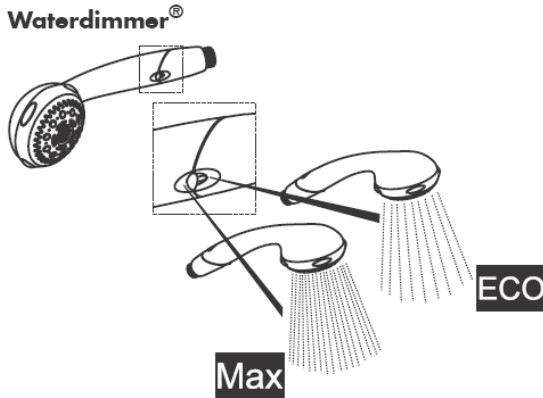
### Paigaldamine

---



### Paigaldamine

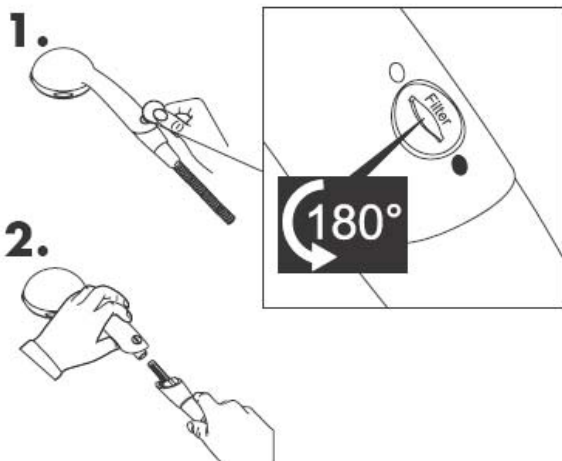
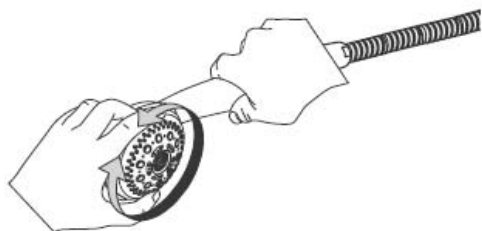
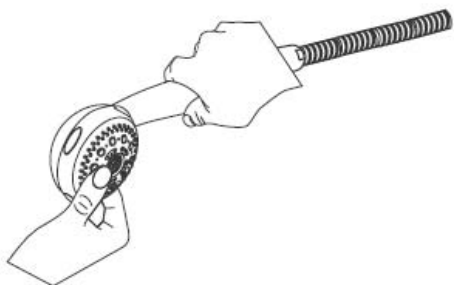
---



Hansgrohe käsiduše võib kasutada koos hüdrauliselt ja termiliselt juhitavate boileritega, eeldusel, et vee surve on vähemalt 1,5 baari ja Waterdim® funktsiooni ei kasutata.

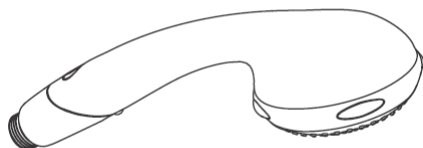


## Puhastamine



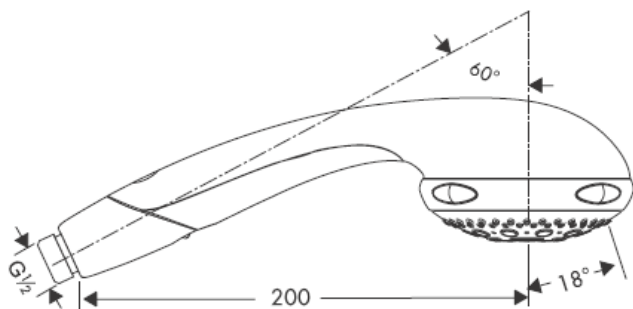
**hansgrohe**

# Montāžas instrukcija



**Aktiva A8**  
28547XXX

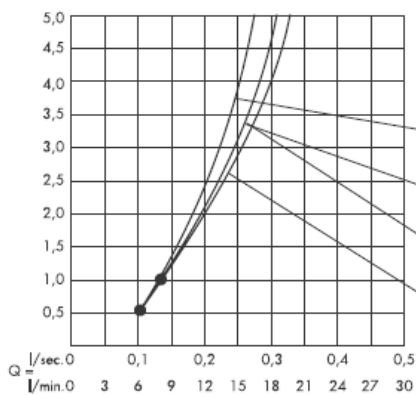
**hansgrohe**



Standarta strūkļa



Maiga strūkļa



Masāžas strūkļa

No • funkcija nodrošināta



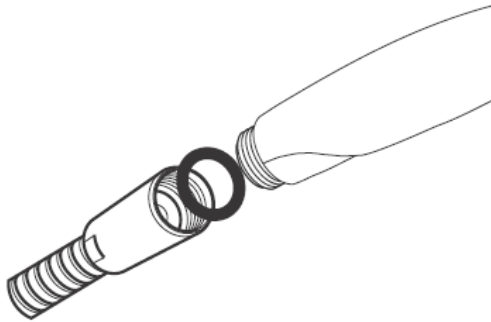
Mono strūkļa

**Tehniskie dati**

Darba spiediens: max. 0,6 MPa  
Ieteicamais darba spiediens: 0,1 – 0,4 MPa  
Karstā ūdens temperatūra: max. 60° C  
(1 MPa = 10 bar = 147 PSI)

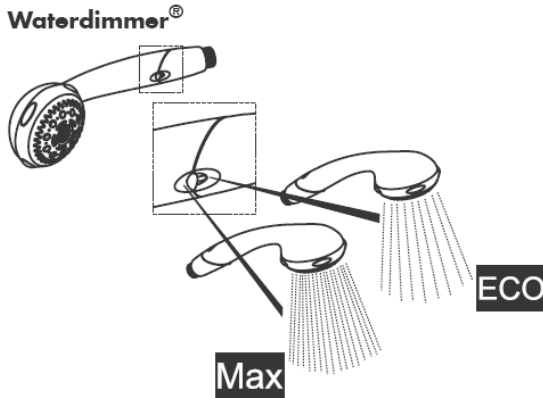
**Montāža**

---



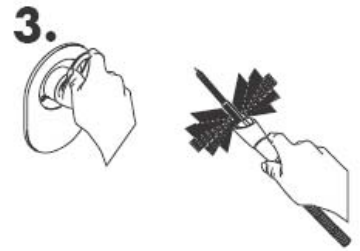
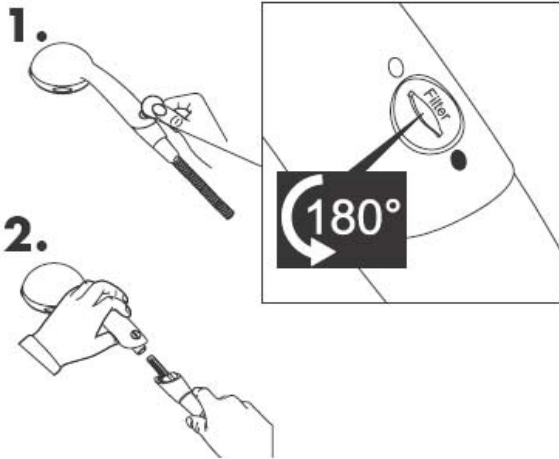
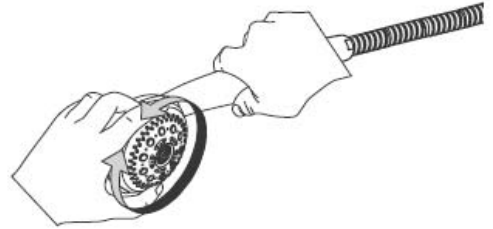
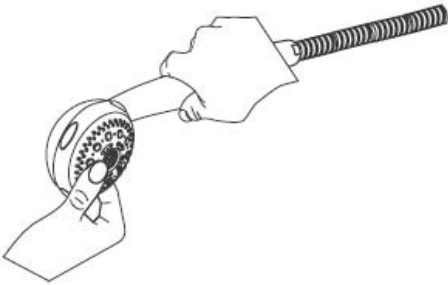
**Montāža**

---



Hansgrohe rokas dušas var izmantot kombinācijā ar hidrauliski un termiski vadāmiem caurteces sildītājiem, neizmantojot Waterdim® funkciju un ja plūsmas spiediens ir vismaz 0,15 MPa.

# Tīrīšana

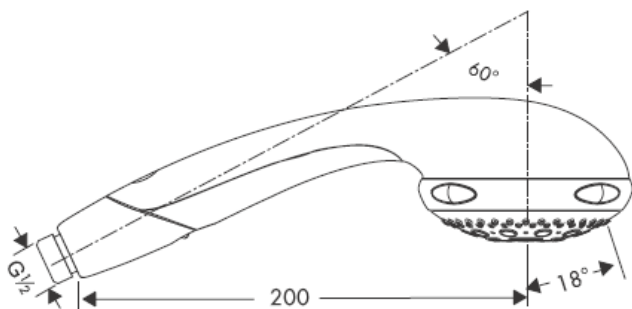


# Uputstvo za montažu



**Aktiva A8**  
28547XXX

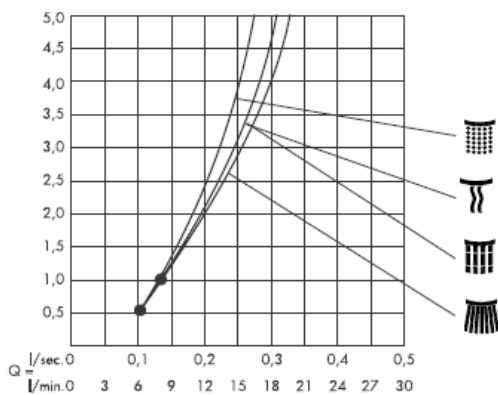
**hansgrohe**



Normalni mlaz



Nežni mlaz



Masažni mlaz

Od • je funkcija zagantovana.



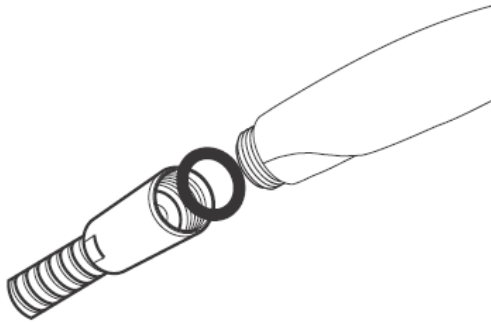
Mono mlaz

**Tehnički podaci**

Radni pritisak: max. 0,6 MPa  
Preporučeni radni pritisak: 0,1 – 0,4 MPa  
Temperatura vruće vode: max. 60° C  
(1 MPa = 10 bar = 147 PSI)

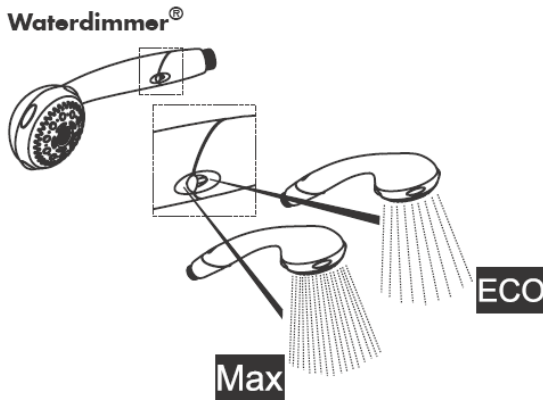
**Montaža**

---



**Montaža**

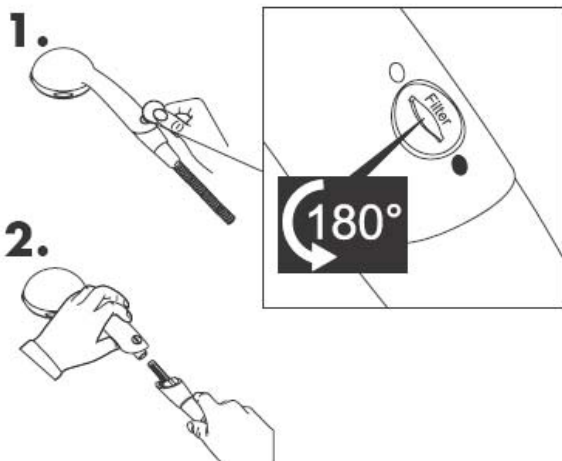
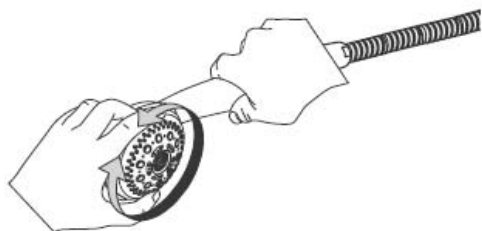
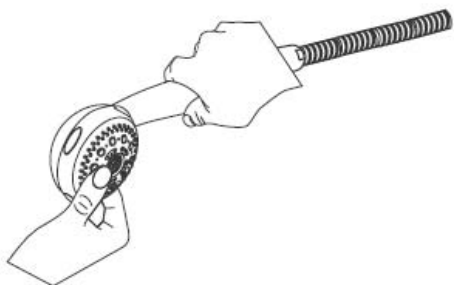
---



Hansgrohe ručni tuševi se mogu koristiti sa hidraulični i termički kontroliranim protočnim bojlerima bez upotrebe waterdim® funkcije, i ako je pritisak najmanje 0,15 MPa.



## Čišćenje



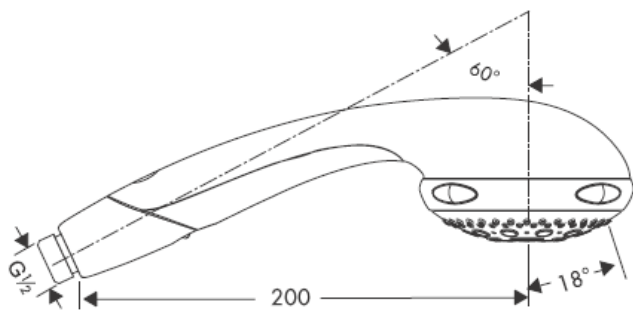
**hansgrohe**

# Montasjeveiledning



**Aktiva A8**  
28547XXX

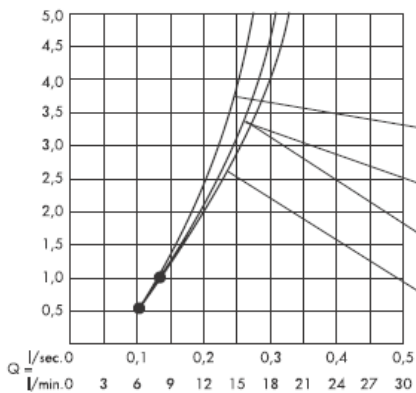
**hansgrohe**



Normalstråle



Softstråle



Massasjestråle

F.o.m. • er funksjonen garantert



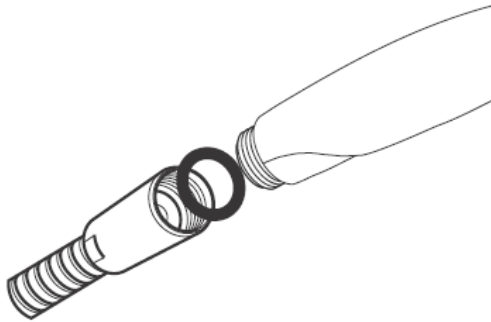
Monostråle

**Tekniske data**

Driftstrykk max. 0,6 MPa  
Anbefalt driftstrykk: 0,1 – 0,4 MPa  
Varmtvannstemperatur max. 60° C  
(1 Mpa = 10 bar = 147 PSI)

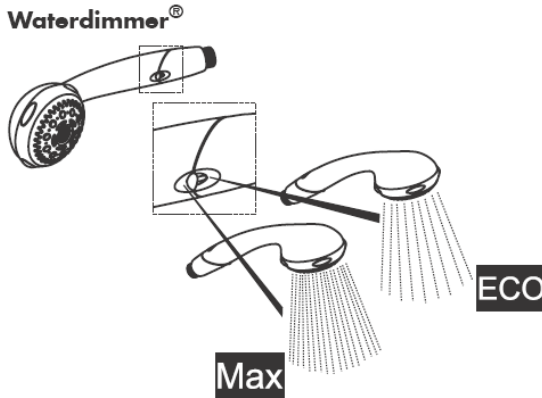
**Montasje**

---



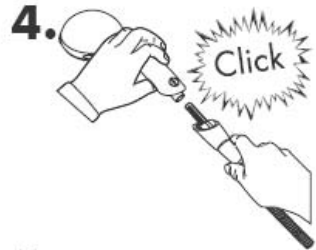
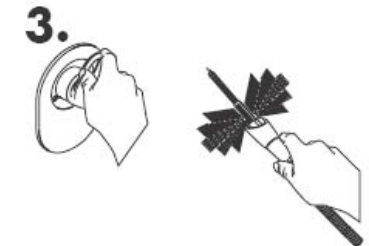
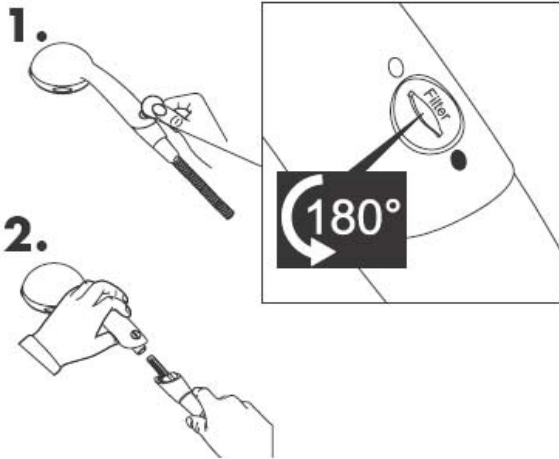
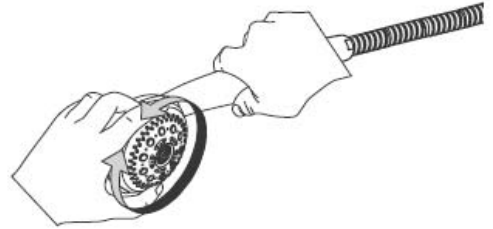
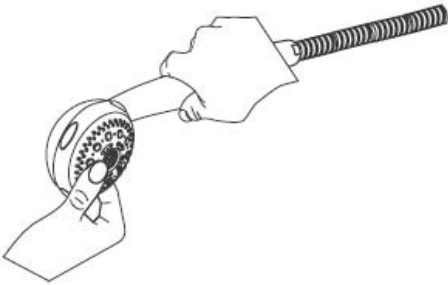
**Montasje**

---



Armaturer fra Hansgrohe kan brukes sammen med hydraulisk og termisk styrte gjennomstrømningsovner uten at det brukes Waterdim® funksjonen og når gjennomstrømningsstrykket er på minst 0,15 MPa.

## Rengjøring



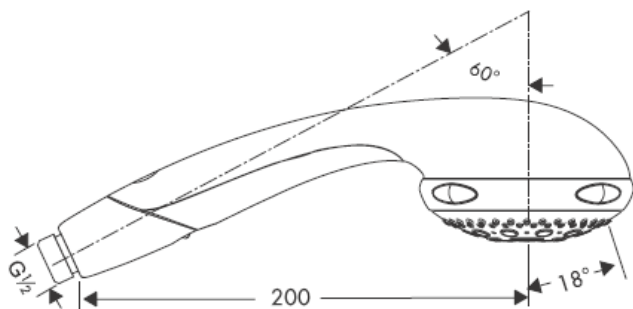
**hansgrohe**

# РЪКОВОДСТВО ЗА МОНТАЖ



**Aktiva A8**  
28547XXX

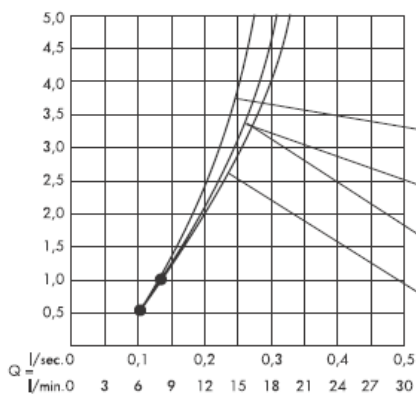
**hansgrohe**



Нормална струя



Мека струя



Масажираща струя

От • функцията е гарантирана.

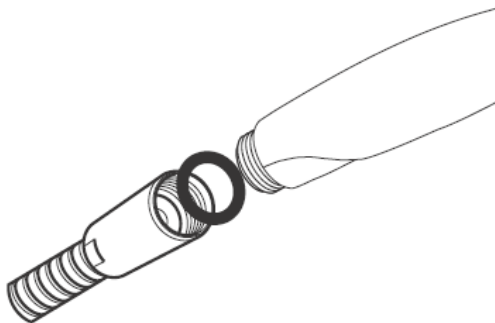


Моно струя

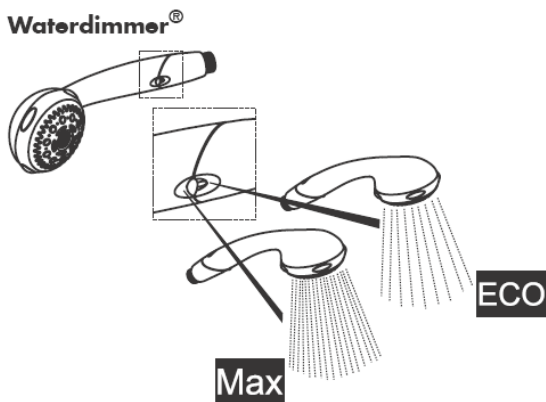
**Технически данни**

Работно налягане: max. 0,6 МПа  
Препоръчително работно налягане: 0,1 – 0,4 МПа  
Температура на горещата вода: max. 60° C  
(1 МПа = 10 bar = 147 PSI)

**Монтаж**



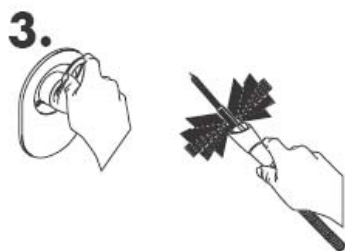
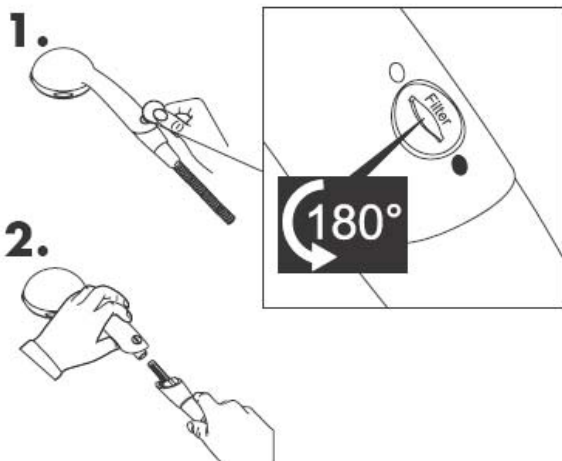
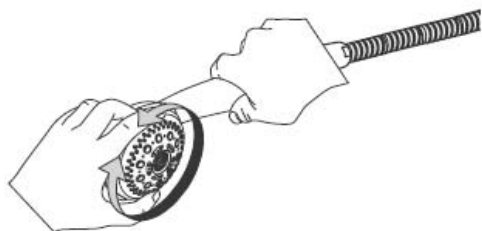
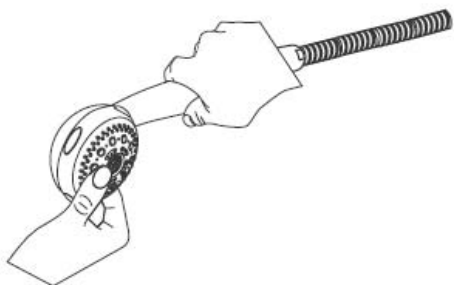
**Монтаж**



Ръчните разпръскватели на Hansgrohe могат да се използват във връзка с хидравлично и термично управляеми проточни нагреватели, без да се използва функция Waterdim® (ограничител на протичане) при хидравлично налягане от минимум 0,15 МПа.



## Почистване

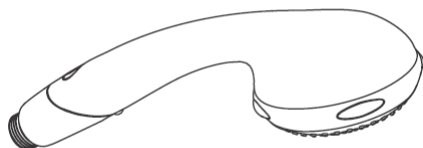


**hansgrohe**

Hansgrohe · Postfach 1145 · D-77761 Schiltach · Telefon +49 (0) 78 36/51-1282 · Telefax +49 (0) 7836/511440  
E-Mail: [info@hansgrohe.com](mailto:info@hansgrohe.com) · Internet: [www.hansgrohe.com](http://www.hansgrohe.com)

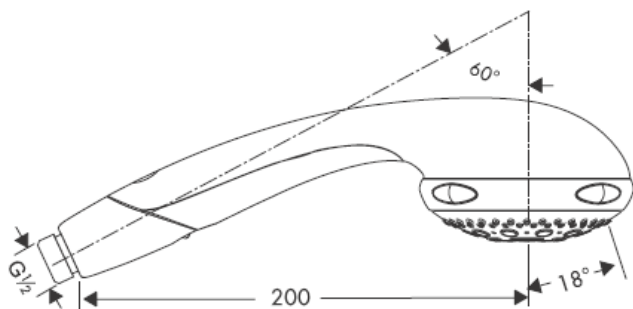
07/2005  
9.08571.01  
БЪЛГАРСКИ

# Udhëzime rreth montimit



**Aktiva A8**  
28547XXX

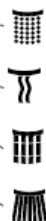
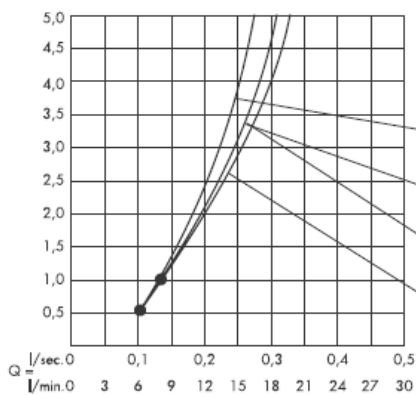
**hansgrohe**



Currili normal



Currili i butë



Currili i masazhit

Nga • është i mundur funksioni.



Currili mono

## Shqib

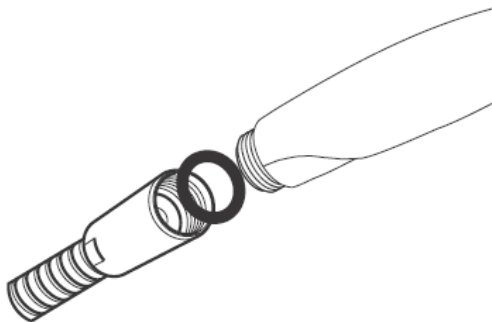
---

### Të dhëna teknike

|                               |               |
|-------------------------------|---------------|
| Presioni gjatë punës          | max. 0,6 MPa  |
| Presioni i rekomanduar:       | 0,1 – 0,4 MPa |
| Temperatura e ujit të ngrohtë | max. 60° C    |
| (1 MPa = 10 bar = 147 PSI)    |               |

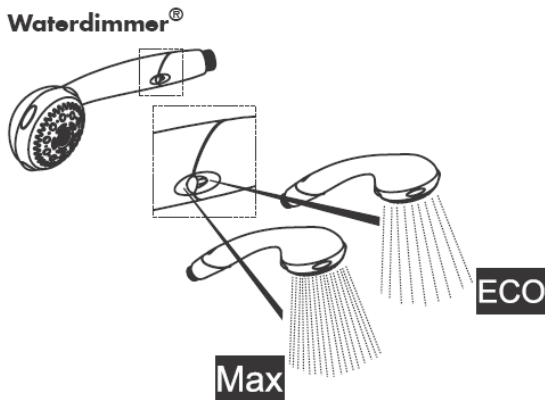
### Montimi

---



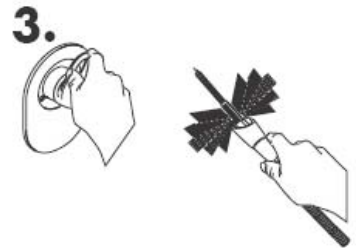
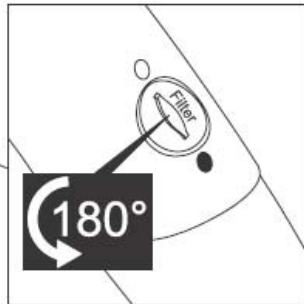
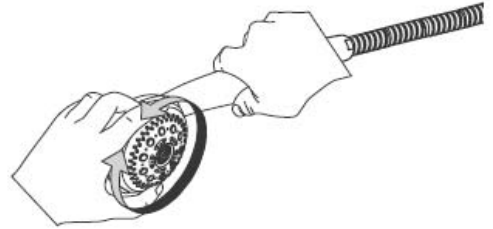
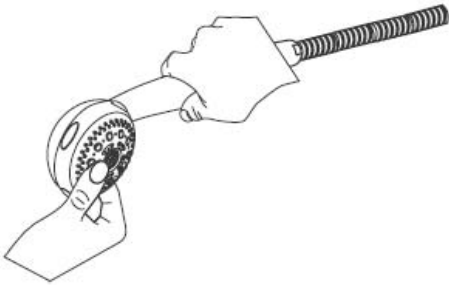
### Montimi

---



Dorezat e dushit të Hansgrohe mund të përdoren në kombinim me ngrohës elektrikë të ujit të drejtuar në mënyrë hidraulike ose termike pa përdorimin e funksionit Waterdim® dhe me një presion minimal të rrjedhjes prej 0,15 MPa.

# Pastrimi



**hansgrohe**